



## Sorrel Mead, NW9

### £550,000

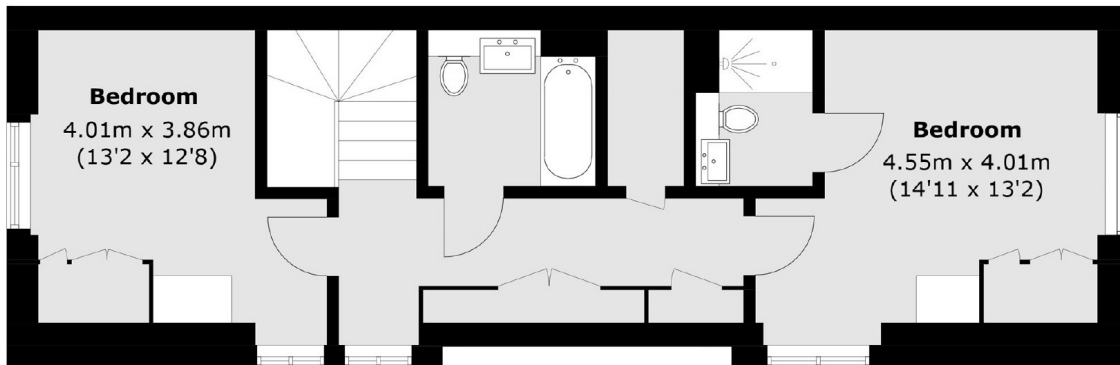
A stunning three bedroom, split level flat with allocated parking located within the Hendon Waterside Development. This spacious flat comes with three bathrooms, a private terrace and direct access to the communal garden.

This excellent modern development overlooks the Welsh Harp Nature Reserve and Reservoir, and is conveniently located close to Brent Cross Shopping Centre and Hendon Thameslink station.

### Features

- Three Bedrooms
- Three Bathrooms
- Excellent Condition
- Allocated Parking
- Private Terrace
- Concierge / Gym

# Sorrel Mead, London, NW9



**First Floor**



**Ground Floor**

Total area (approx.): 102.7 sq. m (1,105.4 sq. ft)