



John Islip Street, SW1P

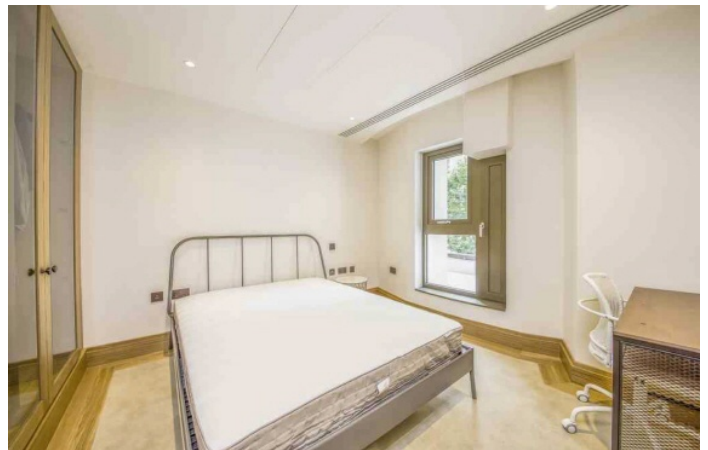
£750,000

An elegant one bedroom apartment situated in the prestigious Cleland House, part of the well renowned Abell and Cleland development positioned in the heart of Westminster.

The Abell and Cleland development is located directly next to Burberry's London headquarters on Dean Ryle Street and within walking distance of the Houses of Parliament, Downing Street and St James's Park. Transport links close by include Westminster and Pimlico tube station which are within short distance.

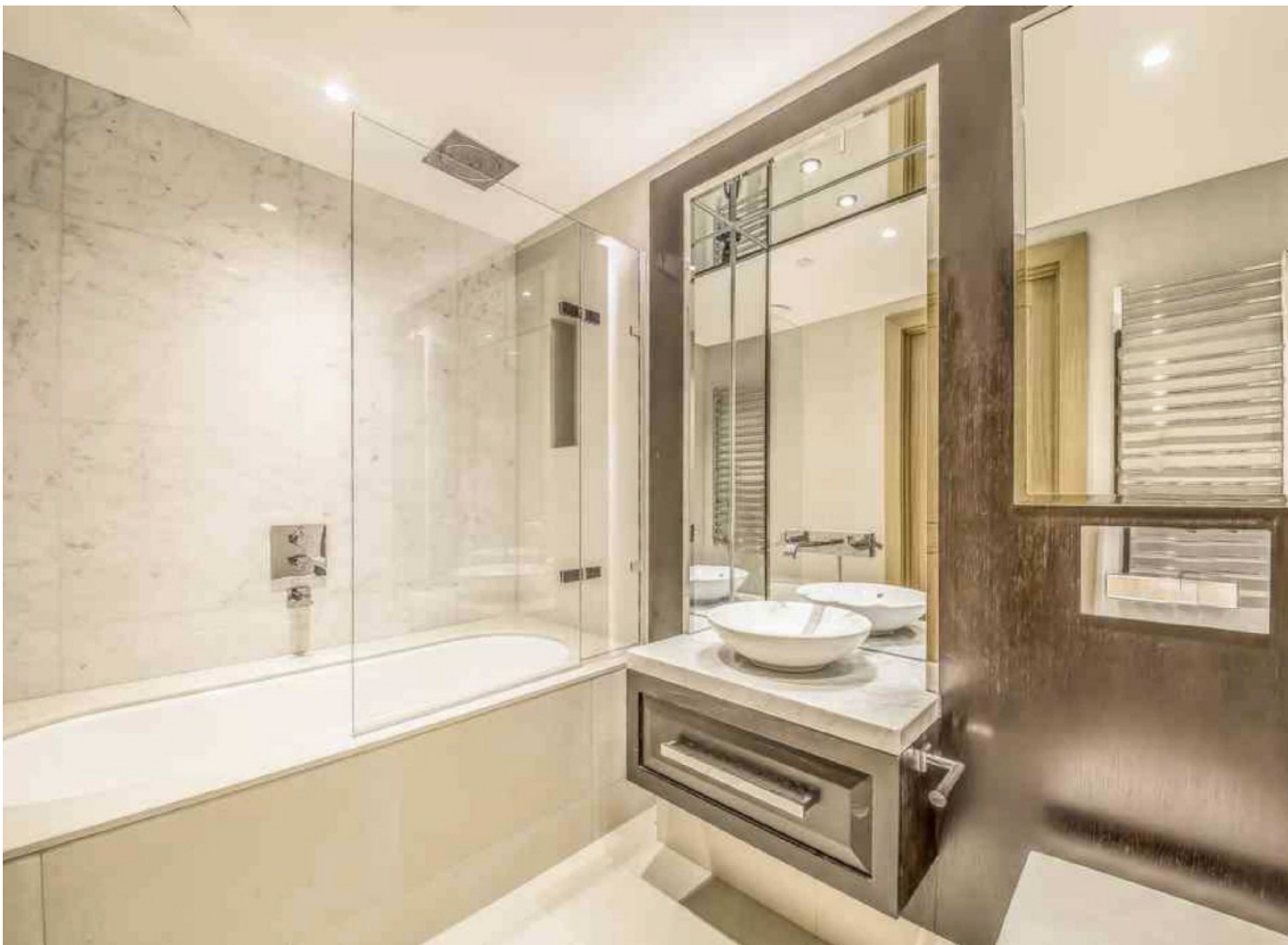
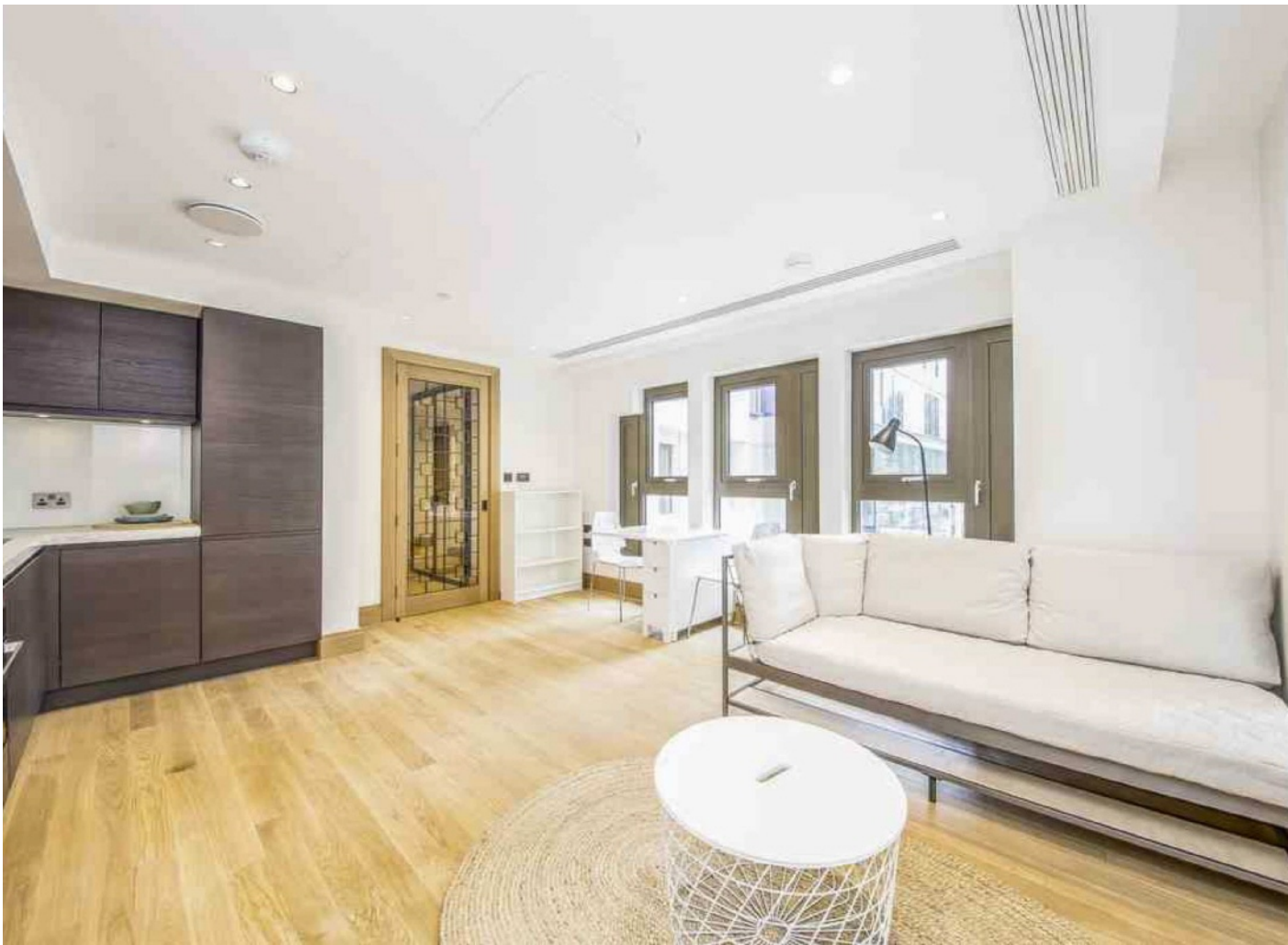
Features

- One Bedroom
- High Finish Throughout
- 24-Hour Concierge
- Gymnasium
- Swimming pool
- Long Lease



John Islip Street, SW1P

The modern living space is complemented by a fully fitted high-end open plan kitchen space, the large bedroom offers built in storage and plush finishes ensuring comfort and convenience. Across the hallway you'll find a sleek bathroom finished to a high standard and plenty of storage throughout. Further benefits include a range of amenities, including a state of the art gym, swimming pool, 24-hour concierge and private landscaped gardens.



John Islip Street, London, SW1P

