

JK CapInvest



£450,000 (Guide Price)

Hookfield, Harlow
Essex, CM18

KEY FEATURES

- Corner Mid-Terrace House
- Massive Rear Garden
- Four Bedrooms
- Conservatory
- Property Band C
- Harlow Council
- 1,285 sqft.
- EPC C

JK Prime Residential

Phone:
+44 (0) 7392 282 397

Email:
sales@jkcapinvest.com



ABOUT

Four Bedroom Home

Quiet Cul de Sac

Large Rear Garden

Corner Mid-Terrace Position

Spacious Family Lounge

Large Fully Fitted Kitchen

Conservatory

Close to Excellent Schools
& Amenities

Excellent Transport Links-
M11, Epping, Stansted &
Liverpool Station



THE PROPERTY

JK CapInvest proudly presents this spacious four-bedroom corner mid-terraced family home in the sought-after Hookfield area of Latton Bush, Harlow.

Ideally located with easy access to local shops, amenities, and top schools like William Martin Primary and Sir Frederick Gibberd College. Commuters benefit from close proximity to the M11, linking to Epping, Bishop's Stortford, Stansted Airport, and Liverpool Street station. Nearby parks, including Town Park and Parndon Wood Nature Reserve, enhance family living.

The ground floor offers a welcoming porch, bright family lounge, fitted kitchen/diner, guest WC, and a superb conservatory overlooking the garden. Upstairs features four generous bedrooms and a family bathroom. A large rear garden is perfect for outdoor fun and entertaining. Don't miss this ideal family home—contact JK CapInvest

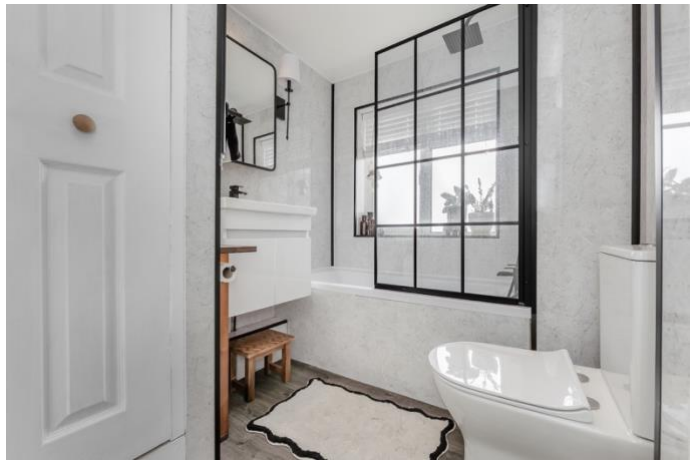


sales@jkcainvest.com

+44 (0) 7392 282 397

Viewing: Strictly by appointment with JK CapInvest Ltd.

Important Notice: *Any areas, measurements or distances are approximate. The text, photographs and plans are for guidance only and are not necessarily comprehensive.*

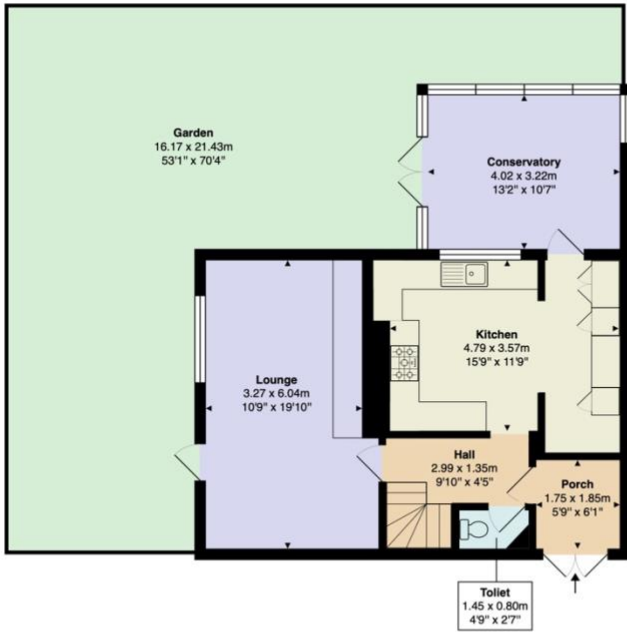


sales@jkcainvest.com

+44 (0) 7392 282 397

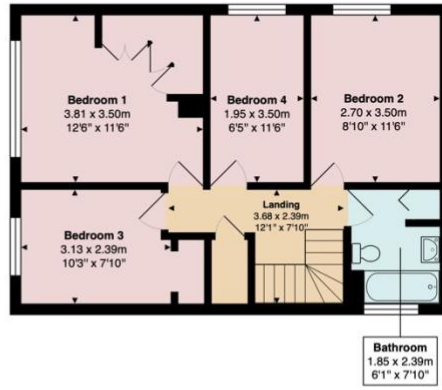
Viewing: Strictly by appointment with JK CapInvest Ltd.

Important Notice: *Any areas, measurements or distances are approximate. The text, photographs and plans are for guidance only and are not necessarily comprehensive.*



175 Hookfield, Harlow, CM18 6QW

Total Gross Internal Area: 119.40 sq m / 1285.21 sq ft
 Garden: 272.39 sq m / 2931.98 sq ft
 Total: 391.79 sq m / 3442.19 sq ft



All measurements are approximate and for display purposes only.
 ©essexpropertyphotography.co.uk



Score	Energy rating	Current	Potential
92+	A		
81-91	B		85 B
69-80	C	70 C	
55-68	D		
39-54	E		
21-38	F		
1-20	G		



sales@jkcinvest.com
 +44 (0) 7392 282 397

Viewing: Strictly by appointment with JK CapInvest Ltd.

Important Notice: Any areas, measurements or distances are approximate. The text, photographs and plans are for guidance only and are not necessarily comprehensive.