



Flaxley Street

Cinderford, GL14 2DH

£210,000

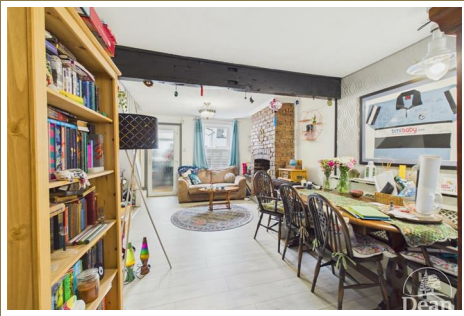


Situated in Flaxley Street, Cinderford, this delightful terraced house presents an excellent opportunity for those seeking a comfortable and inviting home. The property boasts two well-proportioned bedrooms, making it ideal for small families, couples, or individuals looking for extra space.

Upon entering, you are welcomed into a open plan lounge/diner that serves as a perfect gathering space for relaxation or entertaining guests. The layout is both practical and appealing, ensuring that every corner of the home is utilised effectively. The bathroom is conveniently located, providing essential amenities for daily living.

One of the notable features of this property is the provision for parking, accommodating one vehicle, which is a valuable asset in this area. The location offers accessibility, with local amenities and transport links within easy reach, making it a practical choice for everyday life.

This terraced house on Flaxley Street is not just a property; it is a place where memories can be made. Whether you are looking to settle down or invest, this home offers a wonderful opportunity to enjoy the best of Cinderford living.



Entrance Porch :

4'5" x 4'0" (1.35 x 1.24)

Entered via double glazed door, laminate flooring, double glazed window to front aspect.

Lounge / Diner :

20'5" x 9'8" (6.23 x 2.95)

Open plan, Feature brick fireplace, laminate flooring, stairs to first floor with understairs recess, double glazed window to front aspect, double glazed window to utility, opening to kitchen

Kitchen :

9'11" x 6'4" (3.03 x 1.95)

Matching wall and base cabinets, eye level electric oven, gas hob with extractor hood, granite work surfaces, wall mounted Worcester gas boiler, double glazed window to utility, opening to rear hallway.

Rear Hallway :

4'0" x 5'10" (1.22 x 1.80)

Fitted cupboard, recess for fridge/freezer, doors to bathroom and utility.

Utility Room :

14'2" x 3'9" (4.32 x 1.16)

Plumbing for washing machine, space for tumble dryer, vinyl flooring, radiator, double glazed window to side aspect, double glazed door to outside.

Bathroom :

5'4" x 6'0" (1.63 x 1.85)

White suite comprising of bath with shower over, low level WC, vanity wash hand basin, extractor fan, ladder towel radiator, tiled walls, double glazed window to rear aspect.

First Floor Landing :

2'4" x 5'7" (0.72 x 1.72)

Small access to loft space.

Bedroom 1 :

10'6" x 9'7" (3.22 x 2.94)

Radiator, wall lighting, double glazed window to rear aspect.

En-suite :

6'6" x 3'10" (2.00 x 1.18)

Low level WC, wash hand basin, wall to wall

built in wardrobe (previously a shower and could be re-instated), double glazed window to rear aspect.

Bedroom 2 :

9'8" x 8'11" (2.97 x 2.73)

Two built in wardrobes, built in shelved cupboard, access to loft space, radiator, double glazed window to front aspect.

Outside :

Front - Patio and pedestrian gate.

Rear - Low maintenance with good size patio, raised flower beds, Cotswold stone area with shed and greenhouse, parking area with double gates leading to Mousel Lane.



Consumer Notes: Dean Estate Agents Ltd have prepared the information within this website/brochure with care and co-operation from the seller. It is intended to be indicative rather than definitive, without a guarantee of accuracy. Before you act upon any information provided, we request that you satisfy yourself about the completeness, accuracy, reliability, suitability or availability with respect to the website or the information, products, services, or related graphics contained on the website for any purpose.

These details do not constitute any part of any Offer, Contract or Tenancy Agreement.

Photographs used for advertising purposes may not necessarily be the most recent photographs, although every effort is made to update photographs at the earliest opportunity. Any reliance you place on such information is therefore strictly at your own risk. All photographic images are under the ownership of Dean Estate Agents Ltd and therefore Dean Estate Agents retain the copyright.

You must obtain permission from the owner of the images to reproduce them.

Tenanted Property – we are not always able to show the most recent condition of a property due to tenants' privacy and we may choose to show the photographs of the property when it was last vacant to at least allow clients some idea of the internal condition. Therefore, we would of course, urge you to view before making any decisions to purchase or rent the property and before any costs.

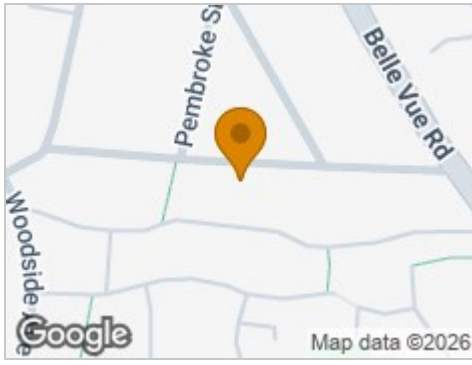
Energy Performance Certificates are supplied to us via a third party and we do not accept responsibility for the content within such reports.

PRC Certificates – Some ex-local authority properties have been repaired in recent years using the PRC Scheme wherein a certificate has been produced by a qualified property engineer. This certificate does not imply the suitability for a mortgage approval and you must satisfy yourself of the work carried out that may meet your lenders criteria.

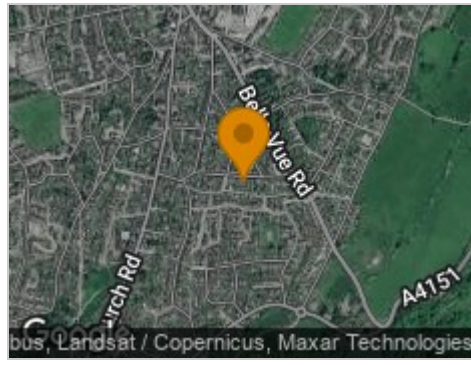
As with leasehold property or new build development sites, you are likely to be responsible for a contribution to management charges and/or ground rent or a contribution to the development service charge. Please enquire at the time of viewing.

You may also incur fees for items such as leasehold packs and, in addition, you will also need to check the remaining length of any lease before you complete a mortgage application form. Please ask a member of our team for any help required before committing to purchase a property and incurring expense.

Road Map



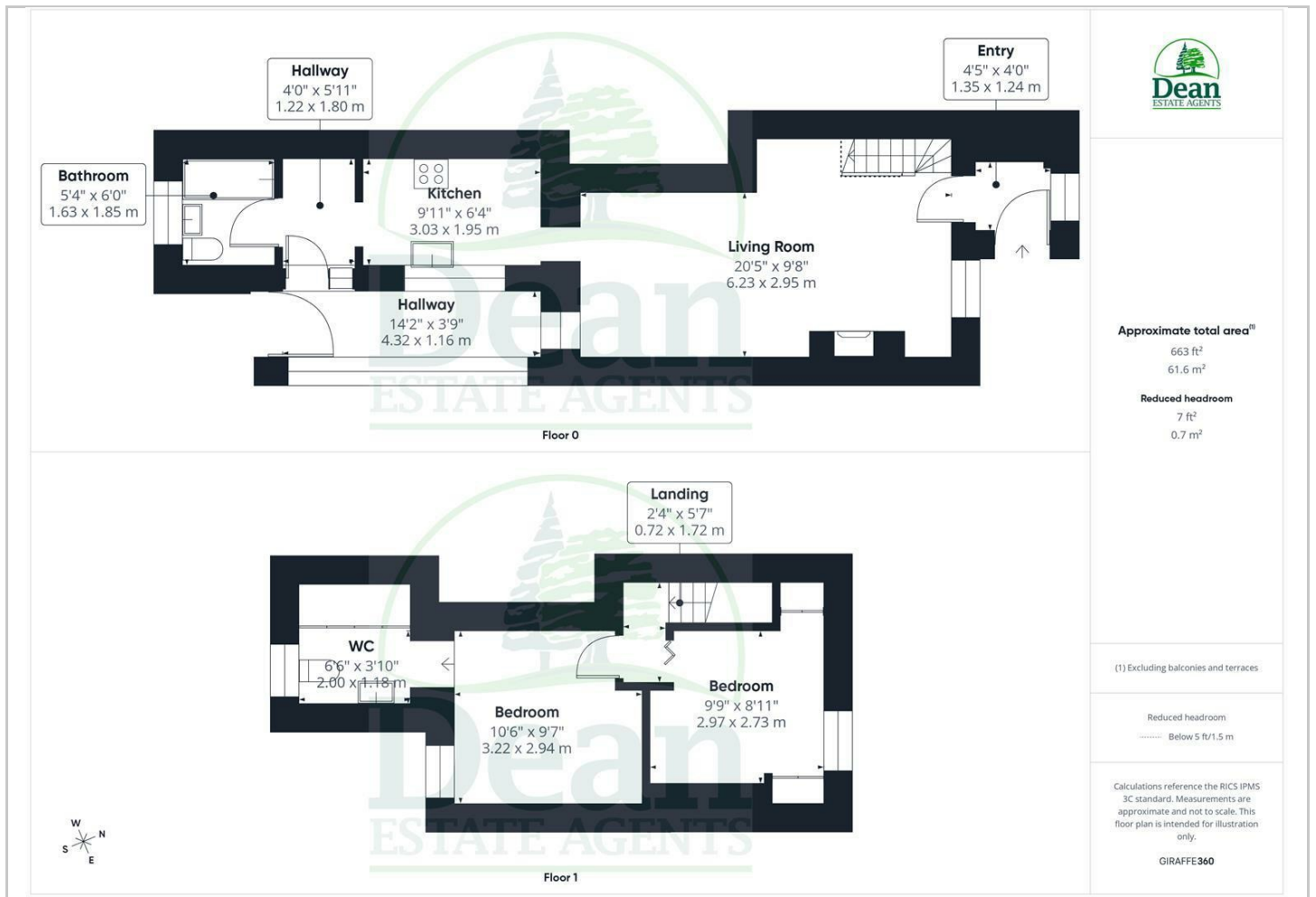
Hybrid Map



Terrain Map



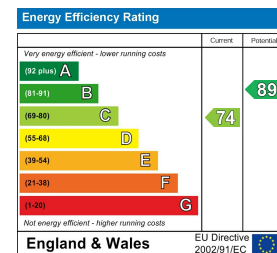
Floor Plan



Viewing

Please contact our Cinderford Office on 01594 825574 if you wish to arrange a viewing appointment for this property or require further information.

Energy Efficiency Graph



These particulars, whilst believed to be accurate are set out as a general outline only for guidance and do not constitute any part of an offer or contract. Intending purchasers should not rely on them as statements of representation of fact, but must satisfy themselves by inspection or otherwise as to their accuracy. No person in this firm's employment has the authority to make or give any representation or warranty in respect of the property.