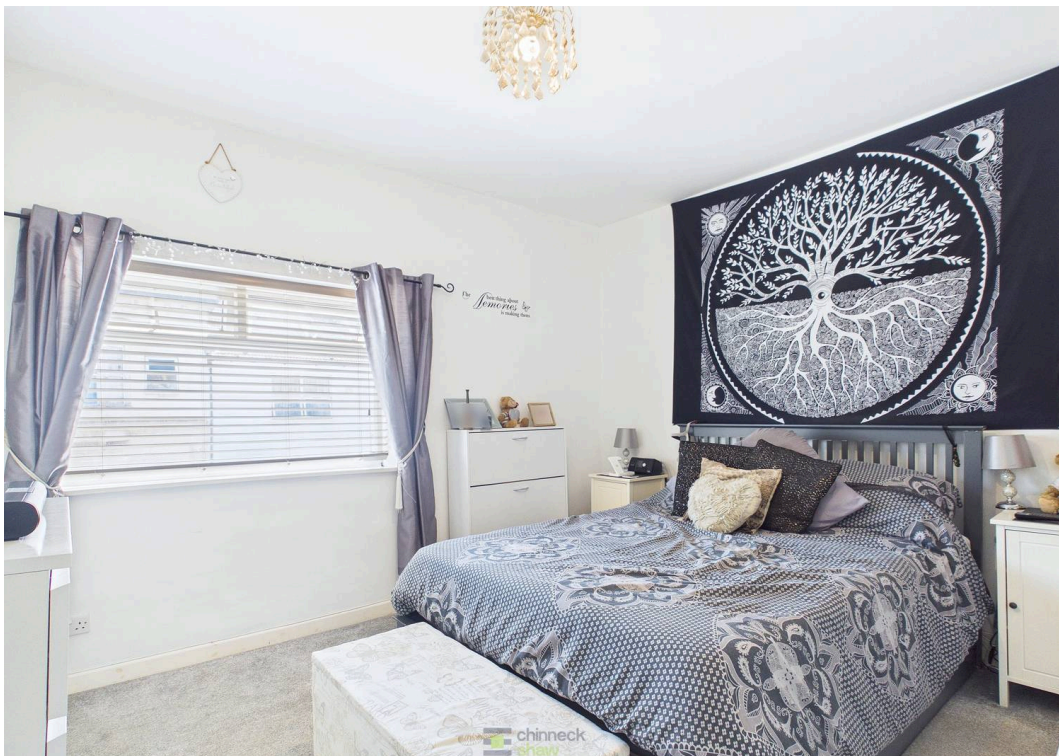




129 Queens Road, Portsmouth

Offers in Region of £260,000

 chinneckshaw



129 Queens Road

Portsmouth

This well-presented three-bedroom terraced home offers stylish, modern living in a convenient central location, making it an ideal choice for first-time buyers, professionals and growing families alike. The bright open-plan living area creates a welcoming space for relaxing and entertaining, while the contemporary kitchen features sleek units and generous worktop space. Upstairs, three well-proportioned bedrooms provide flexible accommodation, complemented by a modern family bathroom. Outside, the good-sized rear garden offers plenty of space for children to play, outdoor dining or simply unwinding, with the added benefit of a useful garden shed for storage. Situated within easy reach of local shops, schools, parks and excellent transport links, this fantastic home combines comfortable living with everyday convenience and is ready for its next owners to move straight in and enjoy.

Material Information • Tenure: Freehold • Council Tax: Band C • Electricity: Mains Supply • Heating: Gas • Water Supply: Mains Supply • Sewage: Mains Supply • Broadband: Standard, Superfast and Ultrafast Fibre are all available in this area • Parking: On Street • Mobile: Ofcom official website checker states that EE, Vodafone, O2 and Three available in the area • Flood Risk: Low Risk





Ground Floor



Floor 1

Approximate total area⁽¹⁾

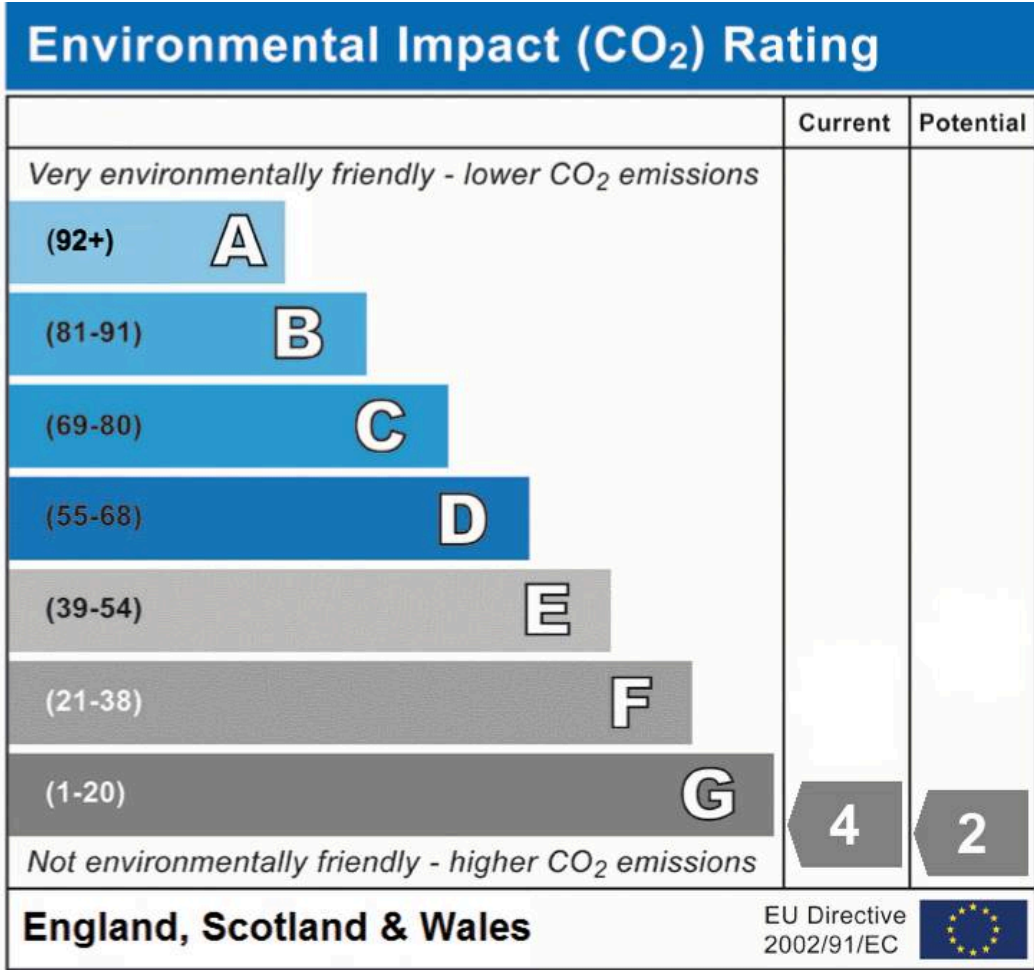
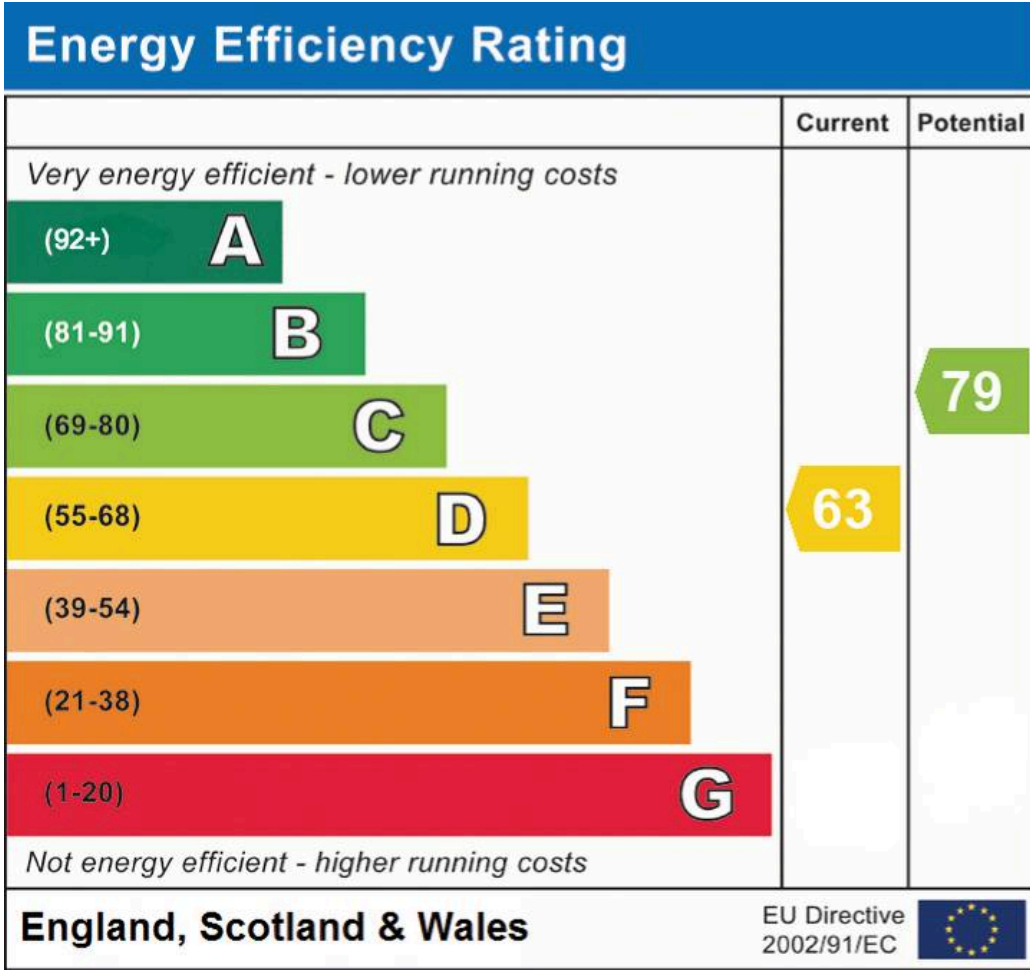
985.05 ft²

91.51 m²

(1) Excluding balconies and terraces

While every attempt has been made to ensure accuracy, all measurements are approximate, not to scale. This floor plan is for illustrative purposes only.

GIRAFFE 360



Chinneck Shaw

Bridge House, Milton Road, Portsmouth – PO3 6AN

023 9282 6731

hello@chinneckshaw.co.uk

www.chinneckshaw.co.uk/

Chinneck Shaw, Bridge House, Milton Road, PO3 6AN Consumer Protection from Unfair Trading Regulations 2008: These details are for guidance only and complete accuracy cannot be guaranteed. If there is any point which is of particular importance, verification should be obtained. The do not constitute a contract or part of a contract. All measurements are approximate. No guarantee can be given with regard to planning permissions or fitness for purpose. No apparatus, equipment, fixture or fitting has been tested. Items shown in the photographs are NOT necessarily included. Interested Parties are advised to check availability and make an appointment to view before travelling to see a property.