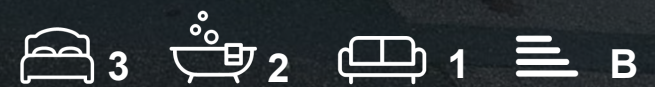




129 Tudor Way
, Hertford, SG14 2FH
Guide price £540,000



129 Tudor Way, Hertford, SG14 2FH

This beautifully presented, south-facing three-storey townhouse extends to approximately 1,207 sq ft and offers three generous double bedrooms and two bathrooms, arranged over three well-balanced floors. Enjoying a prime southerly aspect throughout, the property benefits from two south-facing outdoor spaces, including an impressive roof terrace with far-reaching views, providing the perfect setting to enjoy both stunning sunrises and sunsets. Offered chain free, this bright and spacious home combines modern living with excellent outdoor space in a highly convenient Hertford location.



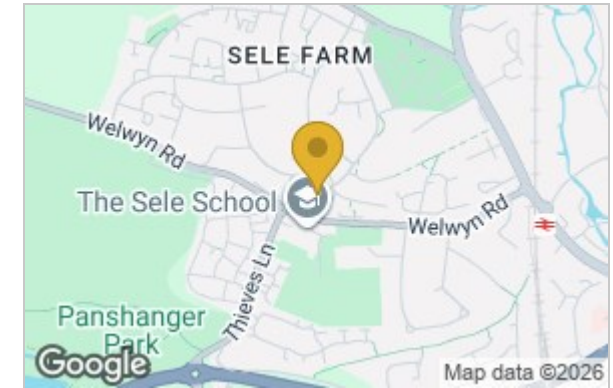
Step Inside:

Step Outside:

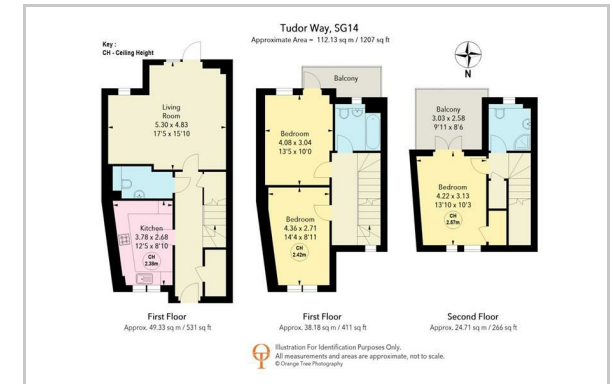
Location:

Buyers Note:

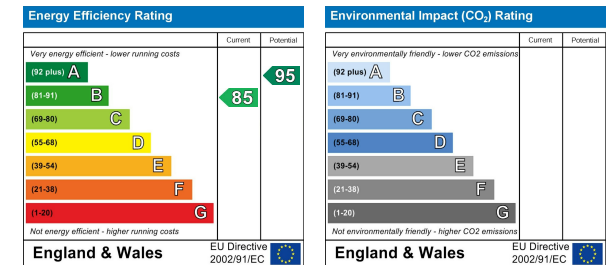
Area Map



Floor Plan



Energy Efficiency Graph



These particulars, whilst believed to be accurate are set out as a general outline only for guidance and do not constitute any part of an offer or contract. Intending purchasers should not rely on them as statements of representation of fact, but must satisfy themselves by inspection or otherwise as to their accuracy. No person in this firm's employment has the authority to make or give any representation or warranty in respect of the property.

Sopers House Sopers Road, Cuffley, EN6 4RY

Tel: 01707 802001 Email: sales@greenhillestates.co.uk <https://www.greenhillestates.co.uk>