





2 Collingwood Road

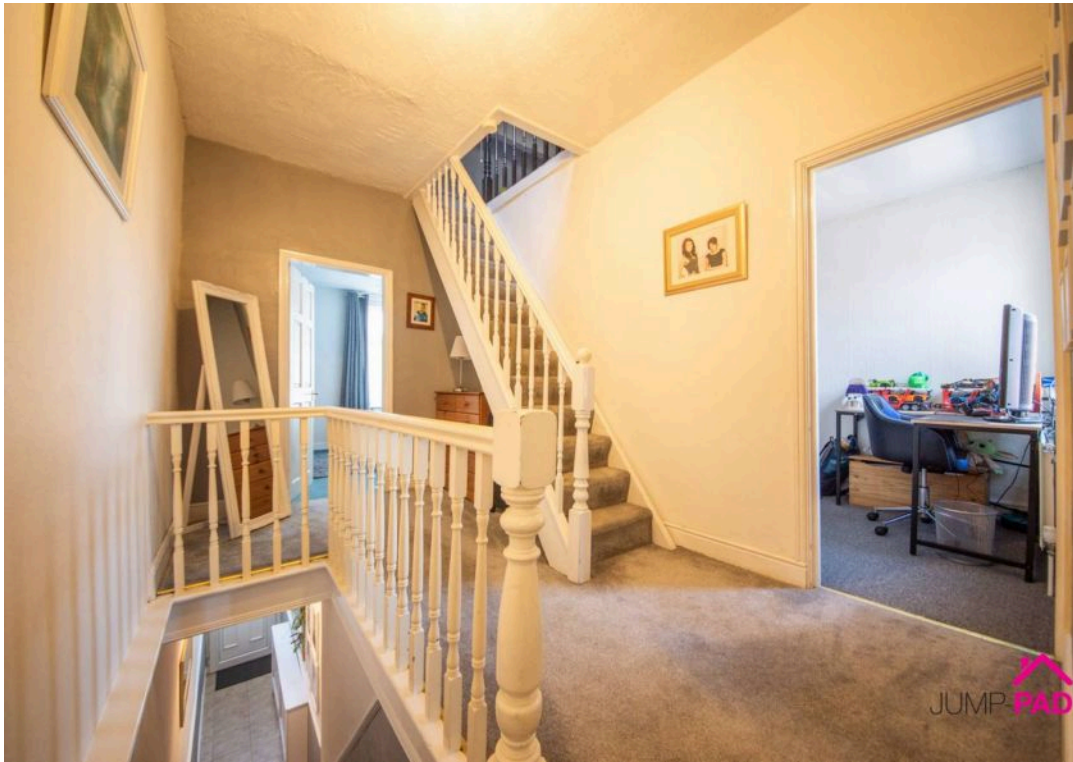
Newton-Le-Willows, Newton-Le-Willows

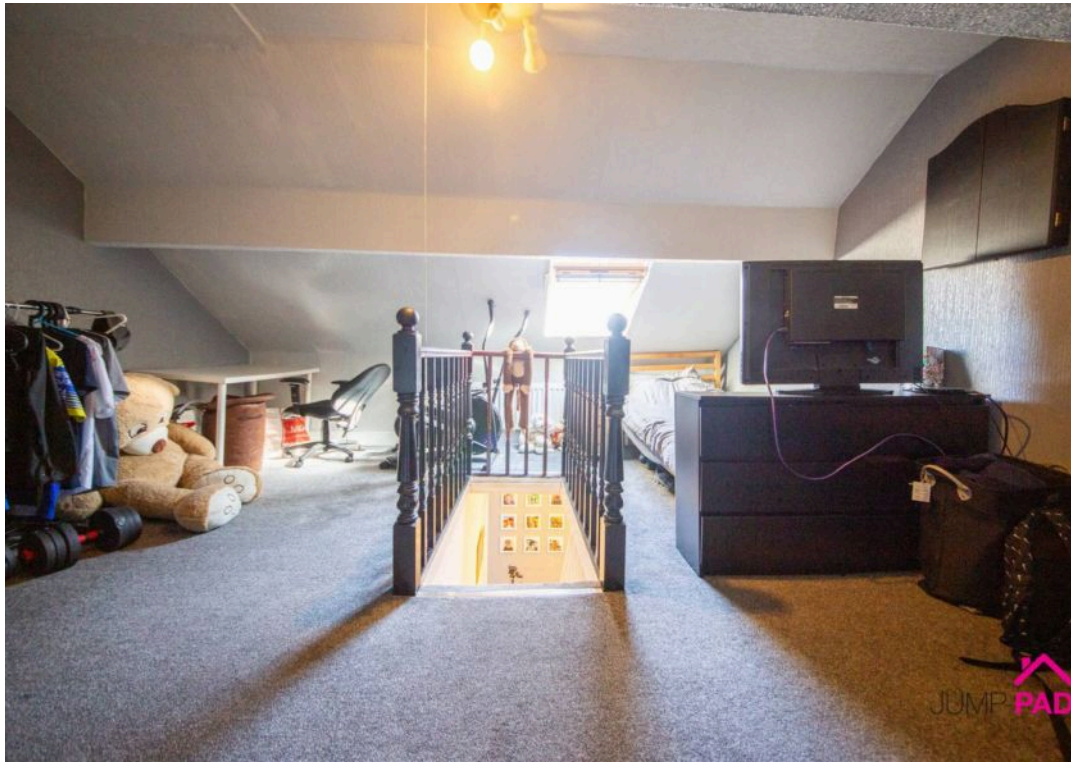
Generously-sized 2 bed link-detached property with converted loft space. Soacious living room, separate dining room, kitchen, 2 double beds, large bathroom, converted loft space, enclosed courtyard
Council Tax band: A

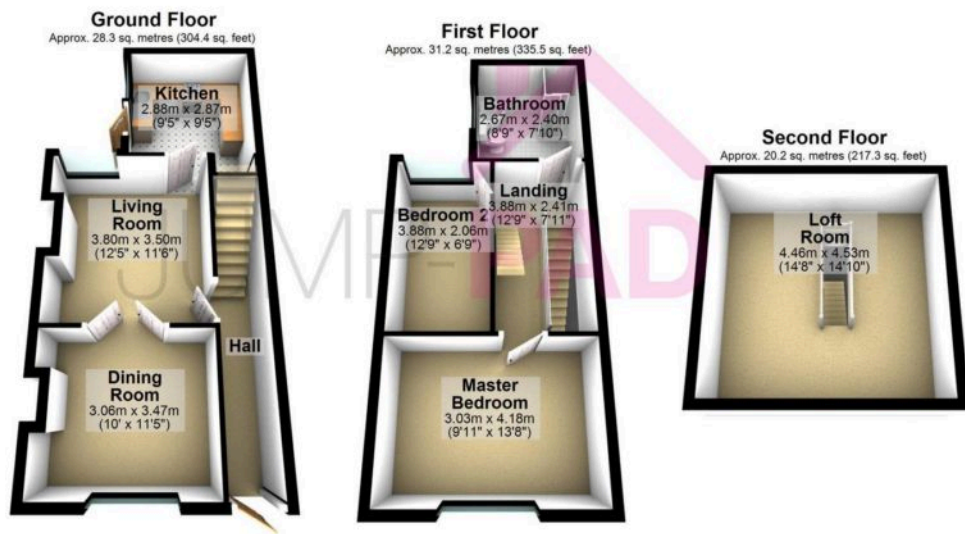
Tenure: Leasehold

- Link Detached 2 Bedroom property, plus converted loft space
- Living room with an open fireplace, separate dining room
- 2 Double bedrooms, large bathroom, stairs to converted loft space
- Generous paved courtyard garden with gated access
- Close to Train Station, and centre of Earlestown









Total area: approx. 79.6 sq. metres (857.1 sq. feet)

Floor plans are intended to give an indication of the layout only. All images, floor plans and dimensions are not intended to form part any contract.
Plan produced using PlanUp.

