



Tranmere Road, SW18

£875,000

Dexters



Tranmere Road, SW18

A truly stunning two double bedroom ground floor period conversion flat with a lovely rear garden and a total area of 937 sq ft to include a spacious garden office.

The property is located on Tranmere Road which is 0.2 miles from Earlsfield overground station and only moments away from Wandsworth Common and Bellevue Road. For those with young children the property sits within the catchment of Earlsfield Primary School, which has been given an Outstanding rating by Ofsted.

Features

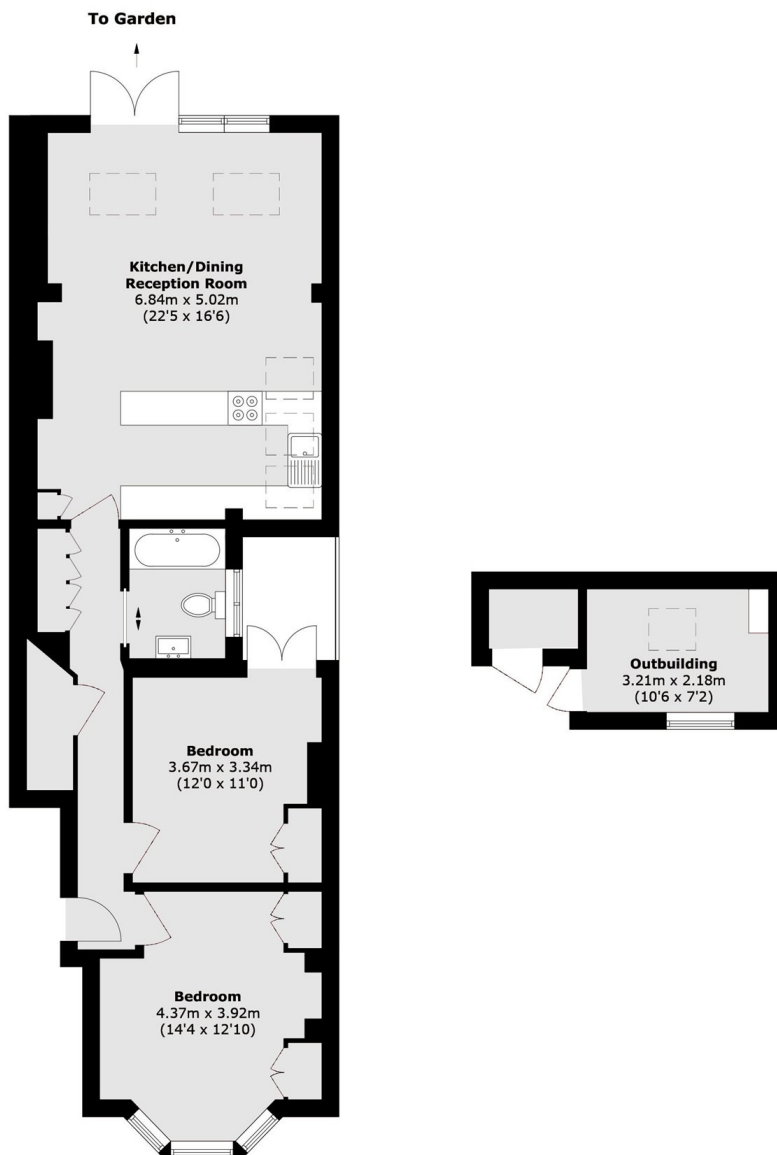
- 100 Sq Ft Garden Office
- 23ft Open Plan Reception
- Two Double Bedrooms
- Fantastic Garden
- Share Of Freehold
- Beautifully Presented







Tranmere Road, London, SW18



Ground Floor

IPMS 2 (approx.): 78.28sq. m (842.0 sq. ft)
Outbuilding (approx.): 8.83 sq. m (95.0 sq. ft)

Dexters

Northcote Road
93 St. John's Road
London
SW11 1QY
Sales
020 7483 6333

Energy Rating: C. We aim to make our particulars both accurate and reliable. However they are not guaranteed; nor do they form part of an offer or contract. If you require clarification on any points then please contact us, especially if you're traveling some distance to view. Please note that appliances and heating systems have not been tested and therefore no warranties can be given as to their good working order.

RICS | Regulated
Estate Agent
and Letting Agent

dexters.co.uk