



## 18 Bluebell Close

Biddulph, ST8 6TJ



**Offers in excess of £310,000**

AVAILABLE TO PURCHASE WITH NO ONWARD CHAIN!

Carters are proud to welcome to the market this beautifully presented detached family home, which offers a perfect blend of comfort and modern living, making it an ideal choice for families seeking space and convenience.

Upon entering, you are welcomed into the entrance hall giving access to the ground floor W/C. The lounge is to the rear with patio doors leading out onto the patio area. The heart of the home is undoubtedly the modern kitchen/diner, which provides an inviting space for family meals and entertaining guests. The kitchen is well-equipped, ensuring that culinary enthusiasts will feel right at home. Heading up the stairs you are greeted with four well proportioned bedrooms, an en suite and family bathroom, providing both privacy and convenience for the entire family. Outside, you will find off-road parking for two vehicles, along with a garage, ensuring that parking is never a concern.

The gardens surrounding the home offer a delightful outdoor space for children to play or for hosting summer barbecues. The location is particularly advantageous, as it is situated close to good local schools and the town's amenities, making daily life both easy and enjoyable.

This detached house on Bluebell Close is not just a property; it is a place where cherished memories can be made. With its spacious layout, modern features, and prime location, it is a wonderful opportunity for those looking to settle in the picturesque Staffordshire Moorlands.

# 18 Bluebell Close

Biddulph, ST8 6TJ

Offers in excess of £310,000



## Entrance Hall

UPVC double glazed entrance door to the front elevation. UPVC double glazed window to the side elevation. Coving to the ceiling. Radiator. Laminate flooring.

## W/C

UPVC double glazed window to the front elevation. Low level W/C. Pedestal wash hand basin. Radiator. Laminate flooring.

## Lounge

15'4 x 14'7 (4.67m x 4.45m)

UPVC double glazed french patio doors to the rear elevation. Coving to the ceiling. Radiator. Television point. Laminate flooring.

## Kitchen/Diner

22'4 x 7'7 (6.81m x 2.31m)

UPVC double glazed windows to the front and rear elevation. UPVC double glazed entrance door to the side elevation. A selection of modern fitted high gloss wall, drawer and base units. Work surfaces incorporating inset a stainless steel sink with a single drainer and mixer tap. Built in electric oven, hob and extractor hood. Integrated washing machine, dishwasher, fridge and freezer. Recessed ceiling down lighters. Radiator. Tiled flooring.

## First Floor Landing

Loft access.

## Bedroom One

11'2 x 9'6 (3.40m x 2.90m)

UPVC double glazed window to the rear elevation. Built in wardrobes. Radiator.

## En Suite

UPVC double glazed window to the side elevation. Fitted suite comprising of shower enclosure with a wall mounted shower. Vanity wash hand basin. Recessed W/C. Inset ceiling down lighters. Partly tiled walls. Chrome heated ladder towel rail. Tiled flooring.

## Bedroom Two

9'8 x 6'11 (2.95m x 2.11m)

UPVC double glazed window to the front elevation. Built in wardrobes. Radiator.

## Bedroom Three

10'11 x 9'1 (3.33m x 2.77m)

UPVC double window to the rear elevation. Fitted wardrobes. Radiator.

## Bedroom Four

8'3 x 8'2 (2.51m x 2.49m)

UPVC double glazed window to the front elevation. Radiator.

## Bathroom

UPVC double glazed window to the side elevation. Fitted suite comprising of a panelled bath. Pedestal wash hand basin. Low level W/C. Chrome heated towel rail. Tiled flooring.

## Exterior

To the front there is a tarmac driveway providing off road parking for two vehicles, and a lawned garden with mature shrub borders. The rear is enclosed which is mainly laid to lawn and a patio area.

## Garage

Up and over door. Power and lighting.

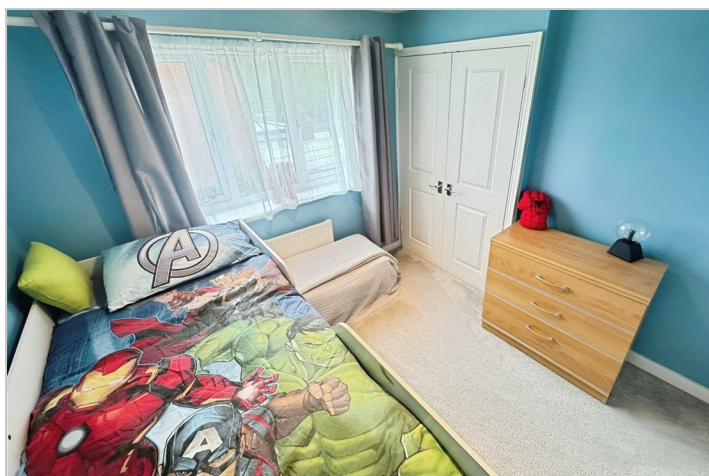
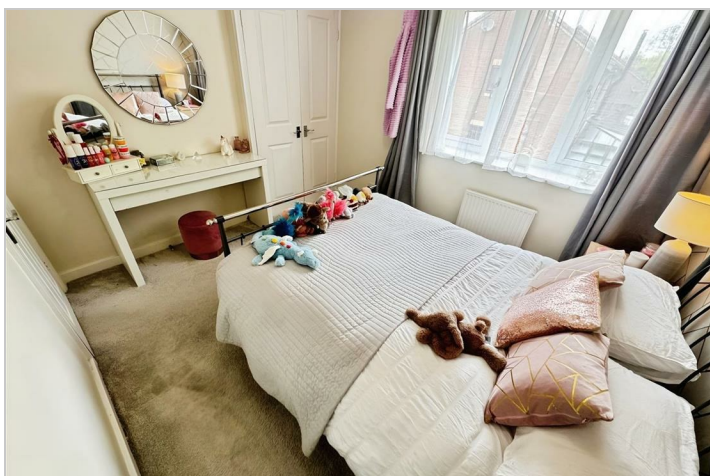
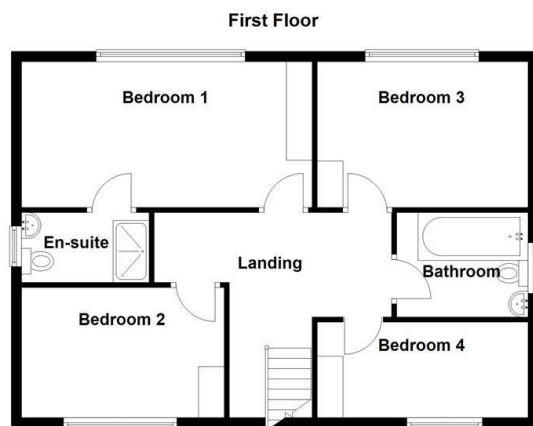
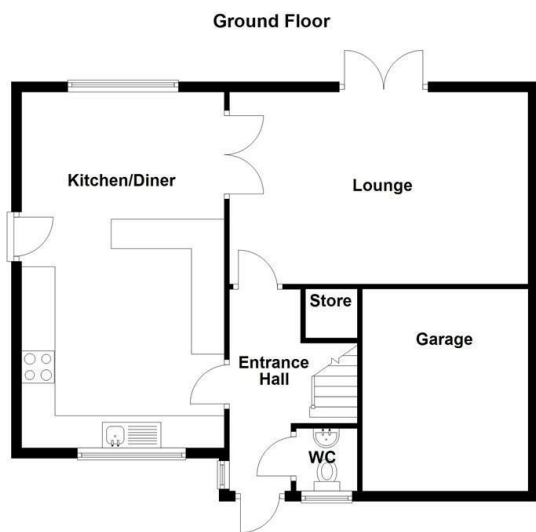
## Additional Information

Freehold.  
Council tax band D.  
Total floor area - 91 sqm / 979 sqf.

## Disclaimer

Although we try to ensure accuracy, these details are set out for guidance purposes only and do not form part of a contract or offer. Please note that some photographs have been taken with a wide-angle lens. A final inspection prior to exchange of contracts is recommended. No person in the employment of Carters Estate Agents Ltd has any authority to make any representation or warranty in relation to this property. We obtain some of the property information from land registry as part of our instruction and as we are not legal advisers we can only pass on the information and not comment or advise on any legal aspect of the property. You should take advice from a suitably authorised licensed conveyancer or solicitor in this respect.

Tel: 01782 470391



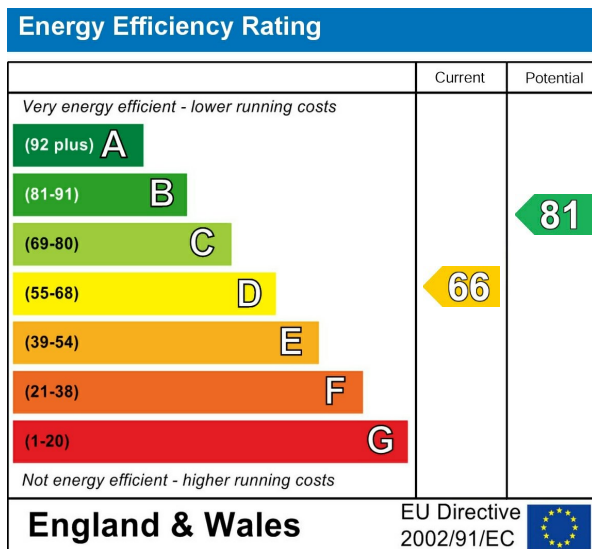
## Road Map



## Hybrid Map



## Energy Efficiency Graph



## Viewing

Please contact our Carters Estate Agents Office on 01782 470391 if you wish to arrange a viewing appointment for this property or require further information.

These particulars, whilst believed to be accurate are set out as a general outline only for guidance and do not constitute any part of an offer or contract. Intending purchasers should not rely on them as statements of representation of fact, but must satisfy themselves by inspection or otherwise as to their accuracy. No person in this firm's employment has the authority to make or give any representation or warranty in respect of the property.

**101 High Street Biddulph Stoke on Trent Staffs ST8 6AB**  
**01782 470391**  
**www.carters-estateagents.co.uk**