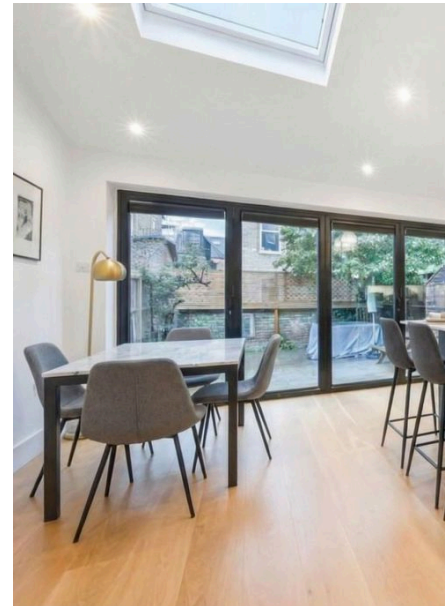




Trewince Road, West Wimbledon, SW20

Guide Price £1,100,000

- Stunning Three Bedroom, Two Bathroom, Period House (1,232 Sq.Ft)
- Extended Accommodation with Character Appeal
- Wonderful Open Plan Reception/Kitchen/Diner and Utility Room.
- Delightful West Facing Garden
- Easy Access Shops, Schools (Hollymount & Kings nearby) and Amenities
- Sought After Lambton Conservation Area Location
- Beautiful Front Aspect Reception
- Family Bathroom, Principal En-Suite and Guest WC
- Close to Raynes Park Station and Bus Routes
- Chain Free Sale. EPC C. Property Ref: DA0587



Stunning three bedroom, 2 bath (1,232 Sq.Ft) with charming garden, in the Lambton Road Conservation Area, close to Raynes Park station, excellent amenities. Offering spacious accommodation arranged over three floors, with superbly presented with stylish finishes throughout. Chain Free. Property Ref: DA0587

