



25 Spinkhill View, Renishaw

£600 pcm

Modern one-bedroom apartment with neutral decor, plush carpets, integrated kitchen appliances, contemporary shower room, gas central heating, and a smart layout. Ideal for professionals or first-time buyers.

Council Tax band: A

Step into this beautifully presented one-bedroom apartment, thoughtfully designed to offer both comfort and style in every detail. The inviting living space boasts a neutral decor and plush carpets, creating a calm and welcoming atmosphere that's perfect for relaxing or entertaining guests. The modern fitted kitchen is a true highlight, featuring integrated appliances, white goods, a sleek oven and hob, and an extractor fan, making it a joy for anyone who loves to cook. The contemporary shower room includes a practical shower cubicle and quality fittings, ensuring a refreshing start to each day. Gas central heating provides warmth throughout the seasons, while the apartment's clever layout maximises space and functionality. Ideal for professionals, first-time buyers, or those seeking a low-maintenance home, this apartment offers a wonderful blend of modern convenience and understated elegance. Don't miss the opportunity to make this delightful property your own - contact us today to arrange your viewing.

If you would like to view this property, or apply for it, please click the 'Request Details' button on Rightmove and enter your information





Entrance Hall

Located on the ground floor, the welcoming entrance hall provides access to the first floor via a staircase. There is a useful boiler cupboard offering additional storage space, along with a central heating radiator.

Kitchen

8' 6" x 6' 0" (2.58m x 1.84m)

Fitted with a range of worktops and complementary splashbacks, the kitchen includes a stainless steel sink with drainer, integrated hob and oven, and space for a washing machine beneath the counter, along with a fridge freezer. A uPVC window overlooks the rear, and the room is finished with practical vinyl flooring.

Lounge

14' 10" x 12' 2" (4.51m x 3.70m)

A comfortable and well-presented living space featuring a uPVC window to the front aspect, allowing for plenty of natural light. The room benefits from a central heating radiator and fitted carpet. An attractive archway creates an open flow through to the kitchen area. Note: One photo staged using AI showing possible furniture arrangement.

Bedroom

11' 6" x 9' 3" (3.50m x 2.82m)

A well-proportioned bedroom situated to the rear of the property, featuring a uPVC window, fitted carpet, and central heating radiator. The room also benefits from built-in storage.

Shower room





Entrance Hall

Located on the ground floor, the welcoming entrance hall provides access to the first floor via a staircase. There is a useful boiler cupboard offering additional storage space, along with a central heating radiator.

Kitchen

8' 6" x 6' 0" (2.58m x 1.84m)

Fitted with a range of worktops and complementary splashbacks, the kitchen includes a stainless steel sink with drainer, integrated hob and oven, and space for a washing machine beneath the counter, along with a fridge freezer. A uPVC window overlooks the rear, and the room is finished with practical vinyl flooring.

Lounge

14' 10" x 12' 2" (4.51m x 3.70m)

A comfortable and well-presented living space featuring a uPVC window to the front aspect, allowing for plenty of natural light. The room benefits from a central heating radiator and fitted carpet. An attractive archway creates an open flow through to the kitchen area. Note: One photo staged using AI showing possible furniture arrangement.

Bedroom

11' 6" x 9' 3" (3.50m x 2.82m)

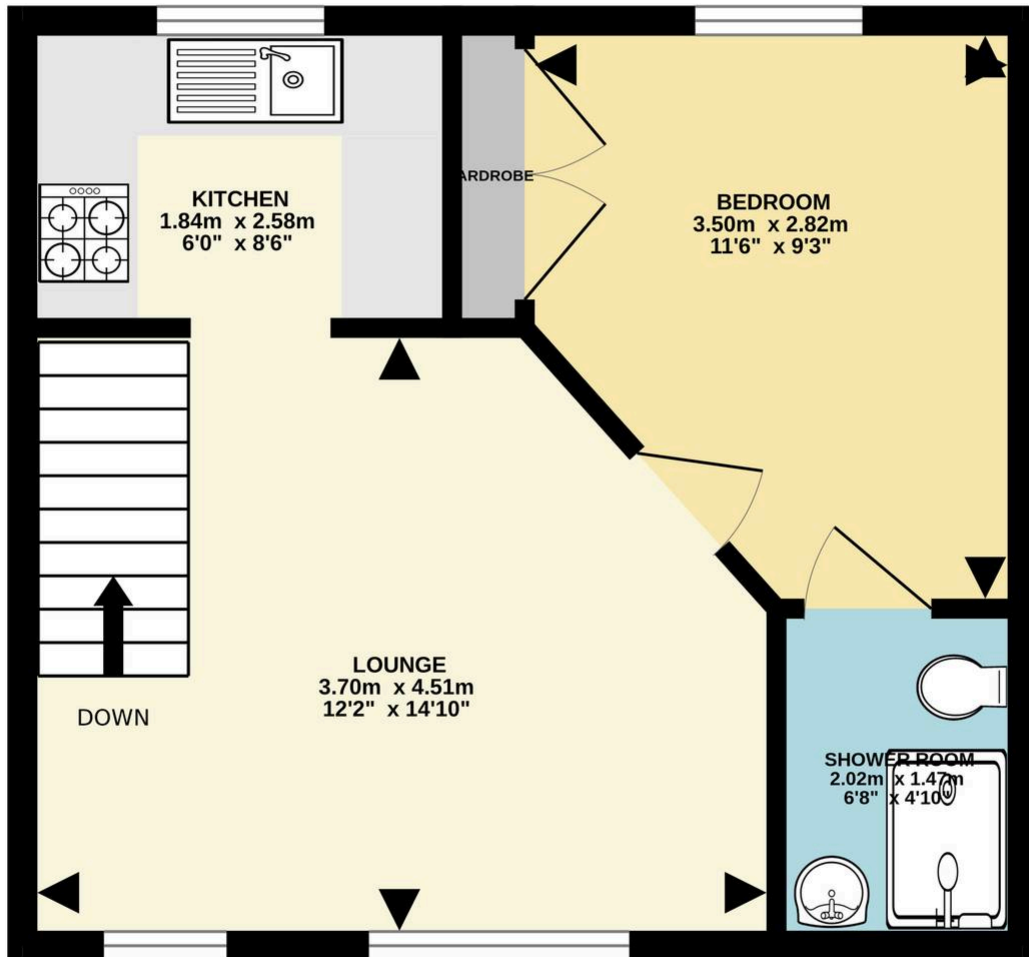
A well-proportioned bedroom situated to the rear of the property, featuring a uPVC window, fitted carpet, and central heating radiator. The room also benefits from built-in storage.

Shower room





FIRST FLOOR
33.2 sq.m. (357 sq.ft.) approx.



You can include any text here. The text can be modified upon generating your brochure.

Council Tax band: A

EPC Energy Efficiency Rating: C

EPC Environmental Impact Rating: C

