

Unit 6 13 Burton Place, Manchester, Lancashire, M15 4PT

Tel: 0161 637 8336

Email: [contactus@ascendproperties.com](mailto:contactus@ascendproperties.com)

[www.ascendproperties.com](http://www.ascendproperties.com)

# Ascend

Built on higher standards



## Victoria Residence, Silvercroft Street, Manchester

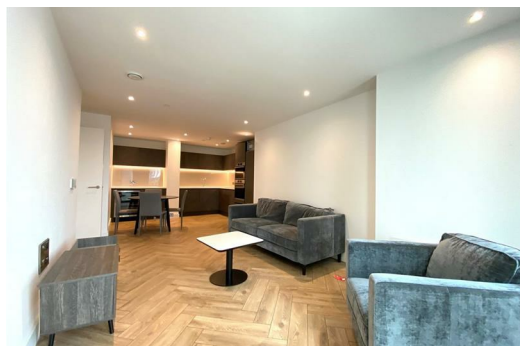
£1,700 PCM

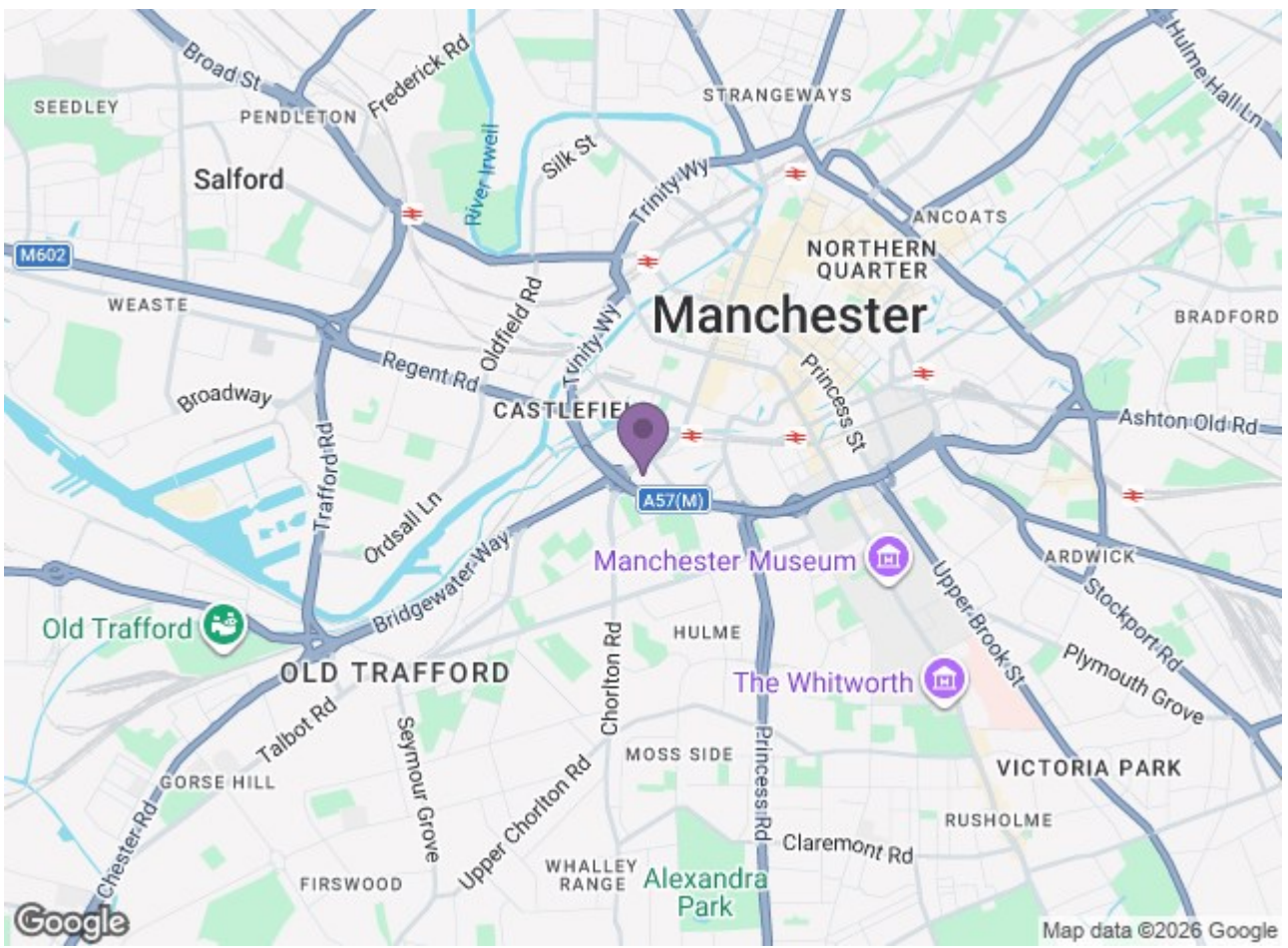
Welcome to Victoria Residence! Crown Street is a set of premium apartments which completes Manchester's most sought-after neighbourhood. With multiple green areas and public outdoor spaces surrounding you as well as retail outlets, coffee shops and podium level restaurants, you'll have the buzz of the city life at your feet and peace and tranquility in your skyscraper views.

This two-bedroom, two-bathroom apartment has it all; space, city views, top quality interior fittings, and what's more, it also comes fully furnished! With 18 floors you'll have 24/7 access to the breath-taking high floor swimming pool and two beautiful Royal Gardens with views for days on the 16th and 44th floors. You'll also benefit from a state-of-the-art gym, resident lounge and communal hub so you'll never be stuck for something to do or somewhere to go.

Taking luxury to a new level, you'll feel right at home with both bedrooms which are of similar size with plenty of light and space. The master benefits from a beautiful en-suite and has equal amounts of space as the main bathroom, which has been completed with a space saving design and is fitted with quality materials and stylish furnishings.

The open plan kitchen and living room will certainly steal your heart as you enjoy the views of this apartment – there's certainly no need to be closing the fitted blinds! The kitchen comes with fully integrated appliances, a double oven, dishwasher, fridge/freezer and even a wine chiller, making this the perfect pad for a Friday night get together or relaxing weekend.





Energy Efficiency Rating		Environmental Impact (CO <sub>2</sub> ) Rating	
Current	Target	Current	Target
Energy A	Energy B	Enviro A	Enviro B
Energy B	Energy C	Enviro B	Enviro C
Energy C	Energy D	Enviro C	Enviro D
Energy D	Energy E	Enviro D	Enviro E
Energy E	Energy F	Enviro E	Enviro F
Energy F	Energy G	Enviro F	Enviro G
Energy G	Energy H	Enviro G	Enviro H
Energy H	Energy I	Enviro H	Enviro I
Energy I	Energy J	Enviro I	Enviro J

Energy Efficiency Rating: Current **B6**, Target **B6**  
 Environmental Impact (CO<sub>2</sub>) Rating: Current **B6**, Target **B6**

**Ascend**  
Built on higher standards