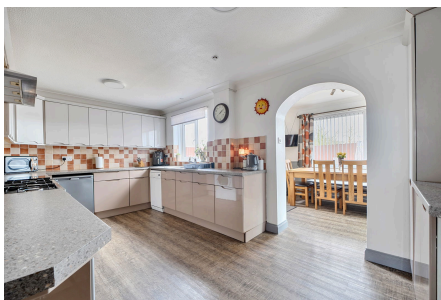


## Fowey Crescent, Callington, PL17

Guide Price £335,000

4 1 2



A well-presented and spacious detached family home situated within a popular residential area of Callington. Offering approximately 1,498 sq ft of accommodation, the property provides flexible and versatile living space, along with a private driveway, garage and no onward chain.

Callington is a charming Cornish town set within a prime South East Cornwall location, approximately 15 miles from Plymouth City Centre. The town offers a wide range of amenities including a health centre, sports centre and gym, supermarkets, churches, and both primary and secondary schools.

## Key Features

- TO ARRANGE A VIEWING PLEASE QUOTE BL0650
- Four Bedrooms
- Private Driveway & Garage
- Low-Maintenance Garden
- Family Bathroom & Downstairs Cloakroom
- Detached
- No Onward Chain
- Popular Residential Area
- Spacious Accomodation
- Freehold

