



2 The Mount Main Road, Ansty

Coventry

Offers Over £316,000



2 The Mount Main Road

Ansty, Coventry

Council Tax band: C

Tenure: Freehold

EPC Energy Efficiency Rating: D

EPC Environmental Impact Rating: D

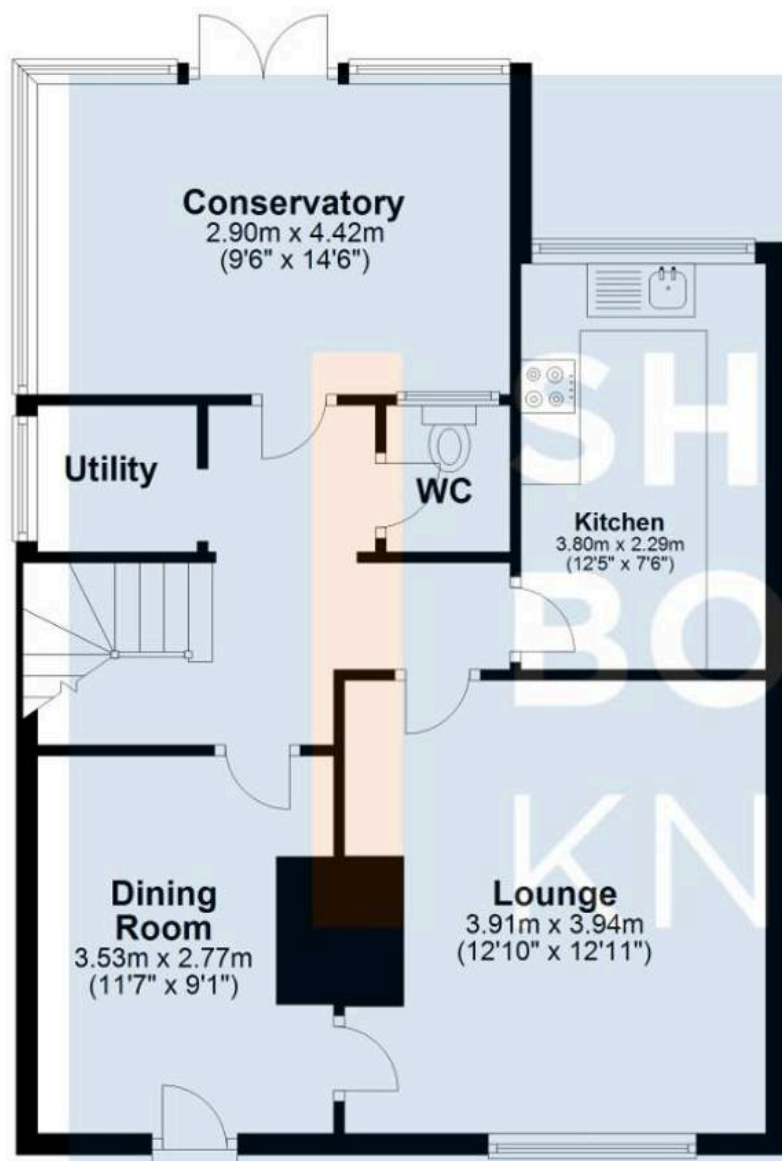
- Versatile living space
- Beautifully presented three bed semi-detached home
- Sought After Village Location
- Large front garden and gorgeous rear garden
- Gorgeous conservatory extension
- Three large double bedrooms
- Ample storage
- Fantastic location
- Well connected with local amenities nearby





Ground Floor

Approx. 59.0 sq. metres (634.6 sq. feet)



First Floor

Approx. 46.5 sq. metres (500.3 sq. feet)



Total area: approx. 105.4 sq. metres (1134.9 sq. feet)

All efforts have been made to ensure that the measurements on this floorplan are accurate however these are for guidance purposes only.
Plan produced using PlanUp.



Sheldon Bosley Knight Nuneaton

Sheldon Bosley Knight, 39 Newdegate Street - CV11 4ER

02476374949 • nuneaton@sheldonbosleyknight.co.uk • www.sheldonbosleyknight.co.uk/