



Sheen Gate Gardens, SW14

CHESTERTONS





A Rare Garden Apartment in East Sheen Parkside

Offered for sale with vacant possession and no onward chain, this rarely available ground-floor apartment benefits from its own private entrance and substantial landscaped front and rear gardens, creating a unique opportunity to acquire a true garden apartment in the sought-after East Sheen Parkside area.

A private front gate opens into an attractive front garden, laid mainly to lawn and bordered by mature trees and planting. Side access leads to a useful storage shed and continues through to the rear garden.

The apartment's private entrance opens into a welcoming hallway, providing access to two generously sized double bedrooms, a family bathroom, and several useful storage cupboards. To the rear of the property, the bright and spacious sitting room enjoys direct access to the garden through patio doors, while the separate kitchen features a breakfast bar and its own door to the outside.

A particular highlight of the property is the beautifully landscaped rear garden, thoughtfully designed with a variety of seating areas, mature planting, and raised beds for easy maintenance and year-round enjoyment. At the far end of the garden is a versatile brick-built outbuilding, currently used as a greenhouse and potting shed. Equipped with electricity and Wi-Fi, it offers excellent potential as a home office, studio, hobby room, or garden retreat.

This exceptional property combines the convenience of apartment living with the space, privacy, and lifestyle benefits more commonly associated with a house.

- Private Gardens
- Ground Floor
- Own Entrance
- Two Bedrooms
- Parkside Location

Asking Price £675,000

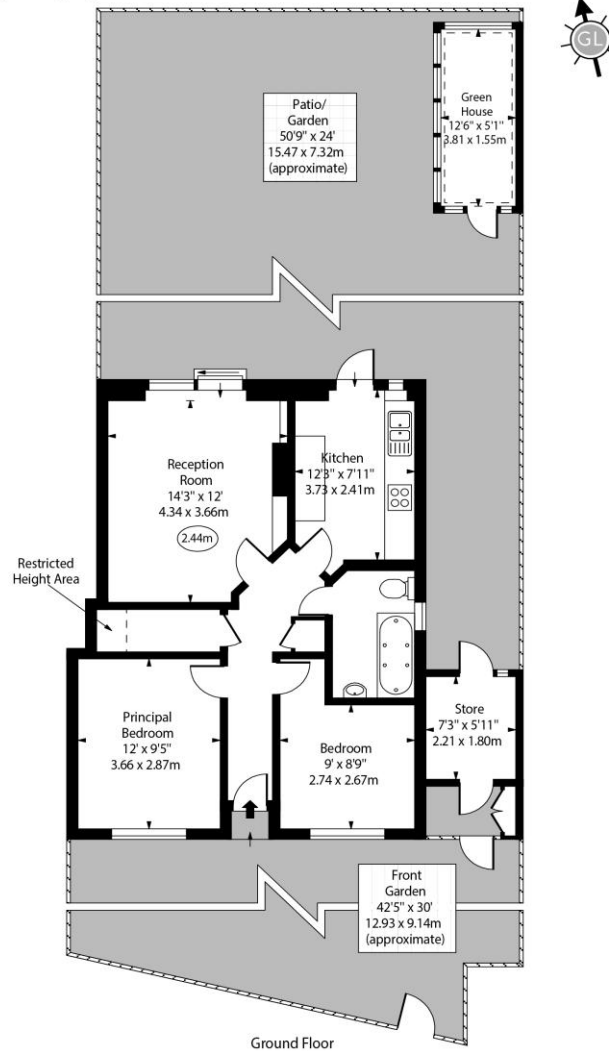
Tenure: Share of Freehold
Service Charge: TBC
Ground Rent: TBC
Local Authority: London Borough of Richmond upon Thames
Council Tax Band: D

Chestertons East Sheen Sales

254A Upper Richmond Road West
East Sheen
London
SW14 8AG
sheen@chestertons.co.uk
020 8104 0580

Crane Court,
Sheen Gate Gardens, SW14

○ - Ceiling Height



Ground Floor

Approx Gross Internal Area 640 Sq Ft - 59.46 Sq M
(Excluding Green House & Store)

Approx. Floor Area Including Restricted Heights 648 Sq Ft - 60.20 Sq M
(Excluding Green House & Store)

Every attempt has been made to ensure the accuracy of the floor plan shown.
However, all measurements, fixtures, fittings, and data shown are approximate interpretations and
for illustrative purposes only. Measured according to the RICS. Not To Scale.
www.goldlens.co.uk
Ref. No. 031985E

Chesterton UK Services Limited trading as Chestertons for themselves and for the vendor of this property whose agents they are, give notice that (i) these particulars do not constitute any part of an offer or contract, (ii) all statements contained within these particulars are made without responsibility on the part of Chestertons or the vendor, (iii) whilst made in good faith, none of the statements contained within these particulars are to be relied upon as a statement or representation of fact, (iv) any intending purchasers must satisfy themselves by inspection or otherwise as to the correctness of each of the statements contained within these particulars, (v) the vendor does not make or give either Chestertons or any person in their employment any authority to make or give representation or warranty whatsoever in relation to this property. Wide angle lenses may be used. ©Copyright Chestertons | Chesterton UK Services Limited | Registered Office 5th Floor, The Lantern, 75 Hampstead Road, London, NW1 2PL Registered Company Number 05334580.



This paper is
100% recyclable