



Sloane Avenue, SW3

£2,383 Per week

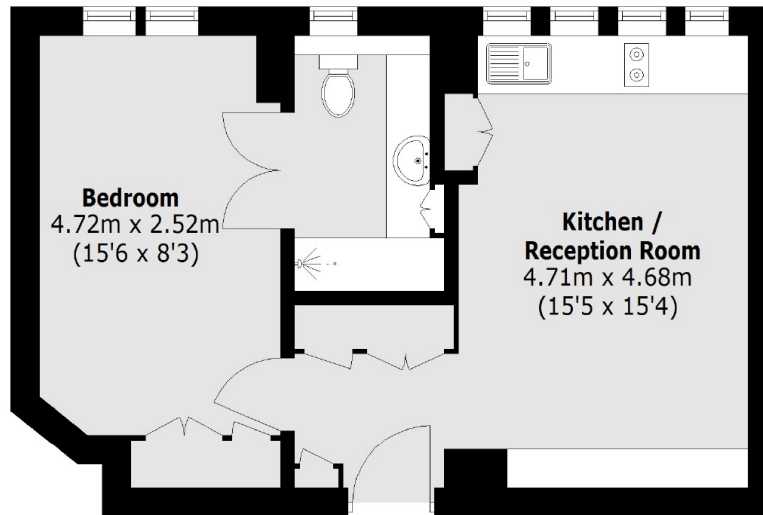
A one bedroom apartment in a portered mansion building with lift. Benefits include solid oak floors, an open plan kitchen with granite work tops and an onsite 24hr porter.

Sandwiched between South Kensington and Kings Road, the location could not be more ideal for those that enjoy a wide choice of coffee shops, dining out and shopping.

Features

- One Double Bedroom
- Solid Wood Floors
- On-site Porter
- Built-in Storage
- Lift Access
- Sixth Floor

Sloane Avenue, London, SW3



Sixth Floor

Total area (approx.): 34.1 sq. m (367.0 sq. ft)