

West Farm, Middle  
Cottage  
Kirkwhelpington  
Newcastle Upon Tyne  
NE19 2RS

Asking Price  
£300,000

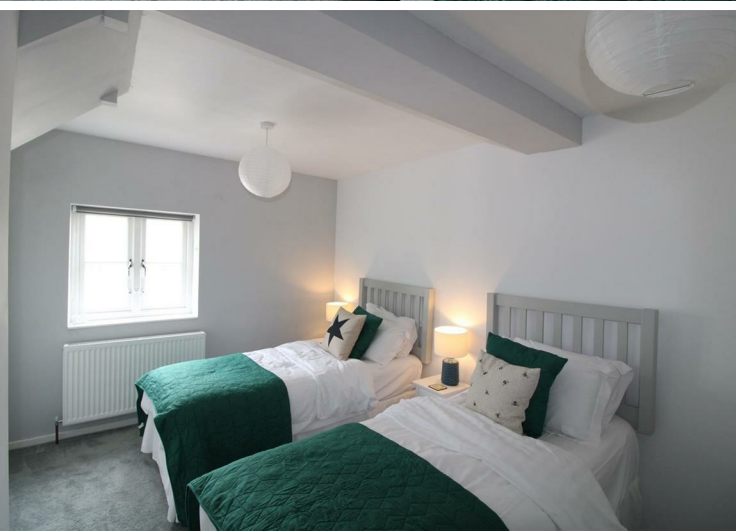


West Farm, Middle Cottage  
Kirkwhelpington  
Newcastle Upon Tyne  
NE19 2RS

- 2 Bed Terraced Cottage
- Stone Built & Set Over 3 Floors
- Kitchen
- Attic Area with Bathroom/WC
- Delightful Village Location

- Lots of Character & Charm
- Lounge with Multi Fuel Stove
- Shower/WC
- South Facing Garden





**EPC Rating: F**  
**Council Tax Band: C**

Whilst every care has been taken to prepare these particulars, they are for guidance purposes only. All measurements are approximate and whilst every care has been taken to ensure their accuracy, they should not be relied upon and potential buyers/tenants are advised to recheck the measurements. The agent has not tested any equipment, services, fixtures or fittings and makes no representation regarding their condition.

**CONTACT**

11 West Road, Ponteland,  
Northumberland, NE20 9SU

E: [ponteland@goodfellowsestateagents.com](mailto:ponteland@goodfellowsestateagents.com)  
T: 01661 829164