



HUNTERS[®]

HERE TO GET *you* THERE



Snowman House, Abbey Road, London, NW6

Asking Price £285,000



**Hunters West Hampstead are now in receipt of an offer for the sum of £270,000 for Flat 15, Snowman House, Abbey Road London, NW6 4DN.

Anyone wishing to place an offer on the property should contact: Hunters West Hampstead, 223 West End Lane, London, NW6 1XJ, 020 7431 4777 before exchange of contracts.**

Set within the vibrant and highly sought-after Abbey Road area, the property comprises two bedrooms, a dual aspect reception room flooded, and a separate kitchen which provides direct access to a private balcony. Positioned on the fifth floor of a purpose-built block, the apartment is conveniently accessed via lift.

The property would benefit from modernisation, making it an ideal prospect for those looking to put their own stamp on a home and add value.

Abbey Road is renowned for its rich cultural heritage and lively atmosphere. Residents benefit from a wide array of local amenities, including independent shops, cafés, and green spaces, all within easy reach. The area is also exceptionally well connected, with excellent transport links providing swift and convenient access across London.

Room Dimensions:

Reception: 19'3" × 10'3" (5.86 m × 3.13 m)

Bedroom 1: 14'11" × 9'9" (4.55 m × 2.98 m)

Bedroom 2: 14'11" × 7'4" (4.55 m × 2.23 m)

Kitchen: 12'2" × 6'10" (3.71 m × 2.09 m)

Balcony: 6'10" × 5'2" (2.09 m × 1.58 m)

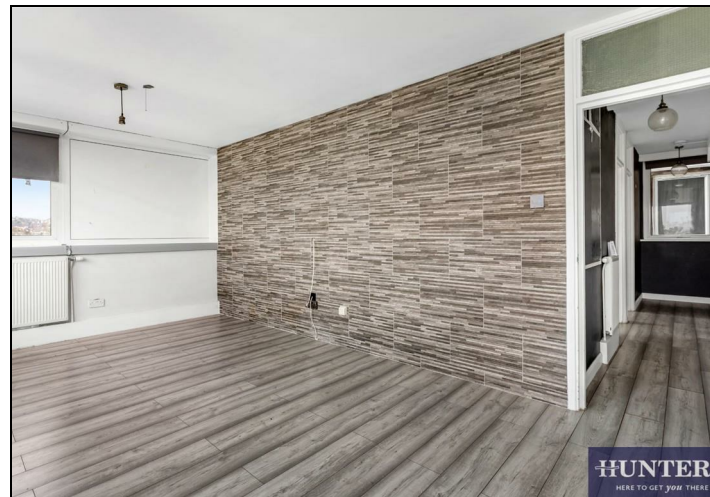
Service Disclaimer stating "All services/appliances have not, and will not be tested."

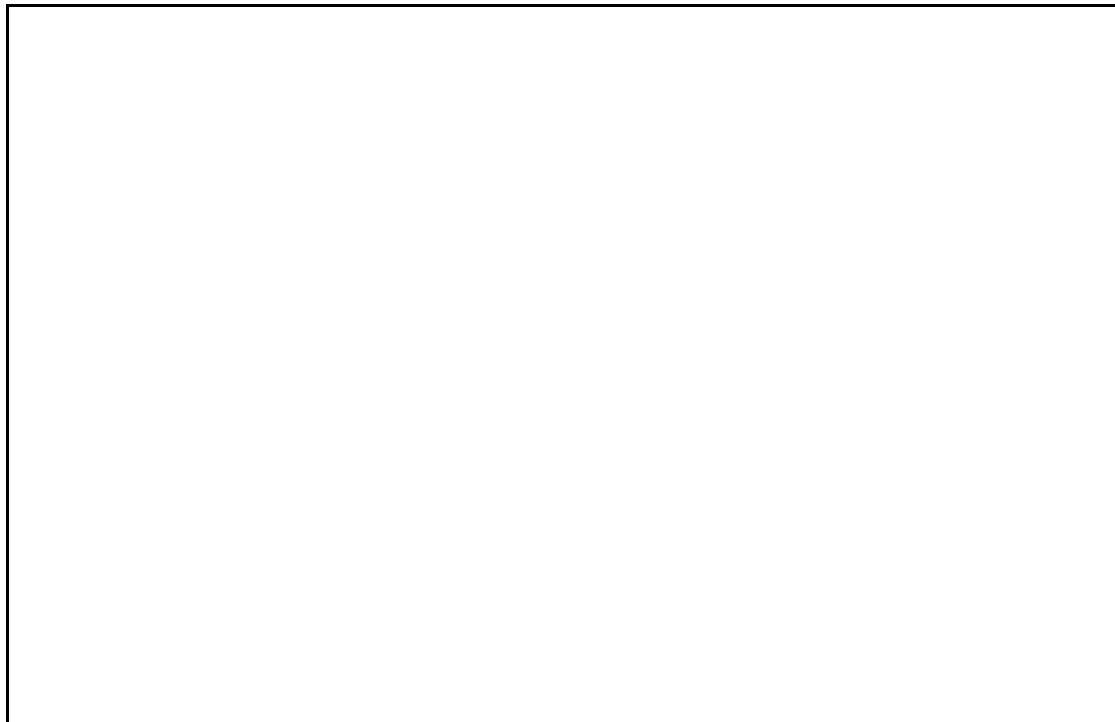
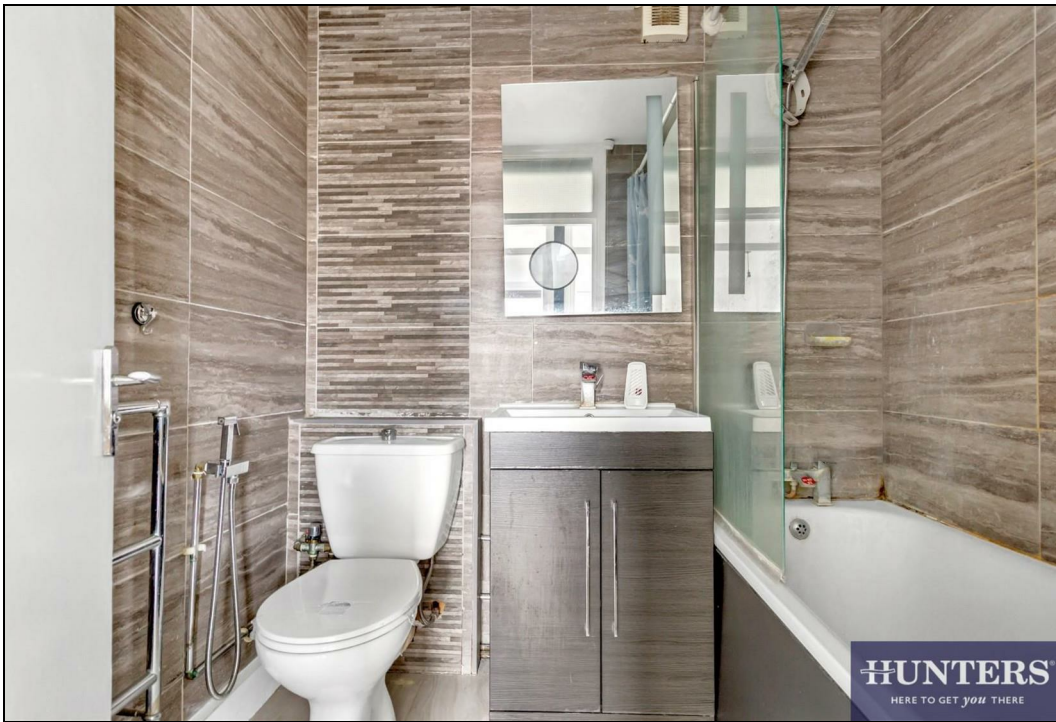
223 West End Lane, West Hampstead, London, NW6 1XJ | 0207 431 4777
westhampsteadsales@hunters.com | www.hunters.com



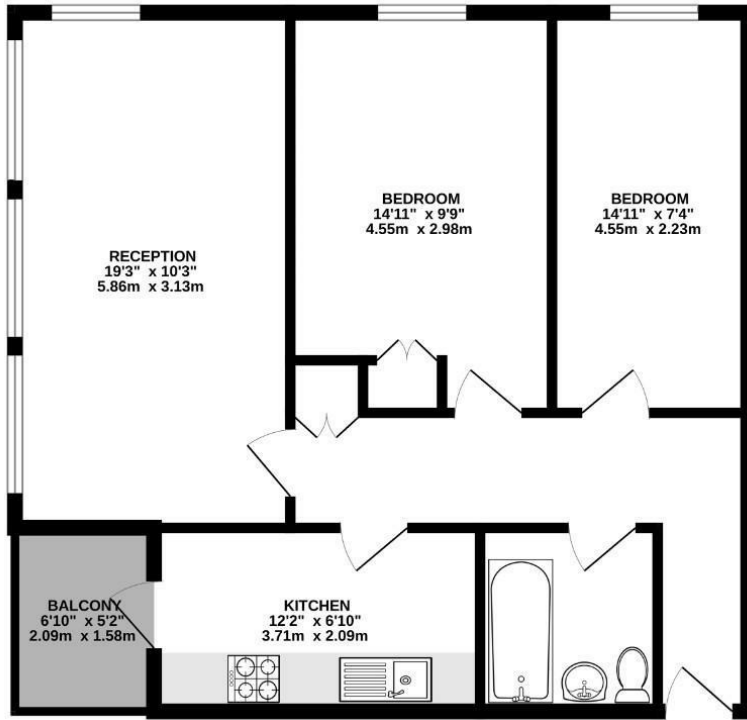
KEY FEATURES

- Bright and spacious reception room
- Separate kitchen with direct access to a private balcony
 - Sold as seen
- Close to a wide range of local amenities,
- Close to a wide range shops, cafés, and green spaces
- Excellent transport links providing easy access across London
- Over 678 sq.ft over internal living space
 - Lift access for convenience



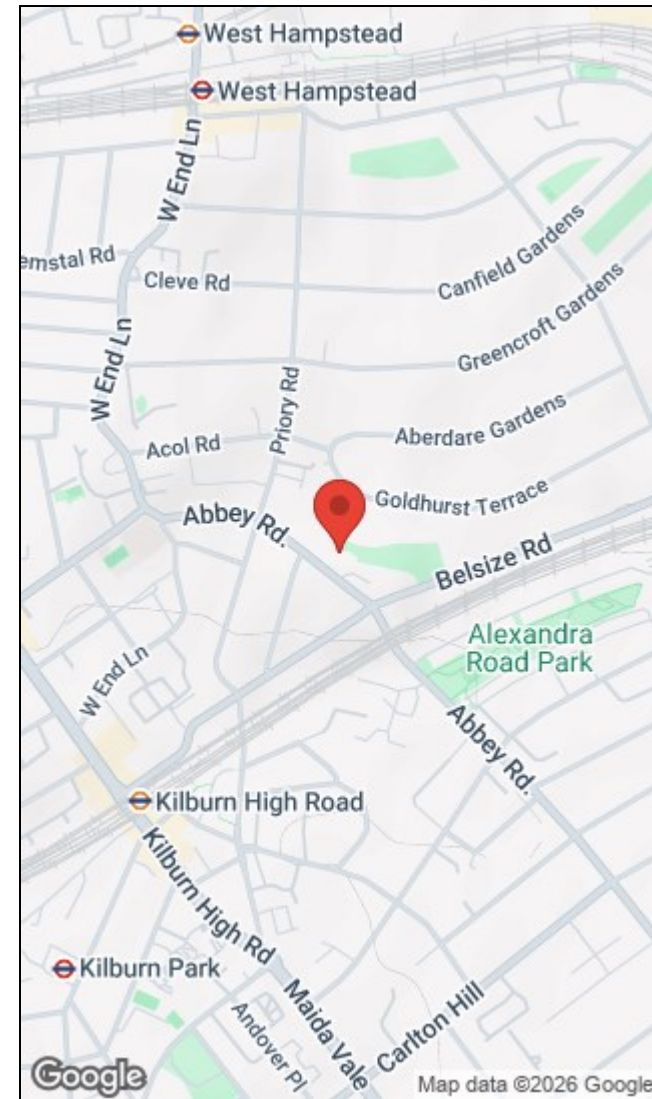


FIFTH FLOOR
678 sq.ft. (63.0 sq.m.) approx.



TOTAL FLOOR AREA - 678 sq.ft. (63.0 sq.m.) approx.

Whilst every attempt has been made to ensure the accuracy of the floorplan contained here, measurements of doors, windows, rooms and any other items are approximate and no responsibility is taken for any error, omission or misstatement. This plan is for illustrative purposes only and should be used as such by any prospective purchaser. The services, systems and appliances shown have not been tested and no guarantee as to their operability or efficiency can be given.
Made with Metropack ©2020



Energy Efficiency Rating		Environmental Impact (CO ₂) Rating	
	Current	Potential	
Very energy efficient - lower running costs			Very environmentally friendly - lower CO ₂ emissions
(92 plus) A			(92 plus) A
(81-91) B			(81-91) B
(69-80) C			(69-80) C
(55-68) D			(55-68) D
(39-54) E			(39-54) E
(21-38) F			(21-38) F
(1-20) G			(1-20) G
Not energy efficient - higher running costs			Not environmentally friendly - higher CO ₂ emissions
	73	74	
England & Wales	EU Directive 2002/91/EC		England & Wales
			EU Directive 2002/91/EC

223 West End Lane, West Hampstead, London, NW6 1XJ | 0207 431 4777
westhampsteadsales@hunters.com | www.hunters.com



This Hunters business is independently owned and operated by Starside Estates Limited | Registered Address: 29 Oakwood Park Road, London, N14 6QB | Registered Number: 6741529 England and Wales | VAT No: 943 9575 77 with the written consent of Hunters Franchising Limited.