



Warwick Road, CR7
£650,000

Dexters



Warwick Road, CR7

A well presented three bedroom Edwardian semi-detached family home spanning approximately 1,682sq ft, with a private garden and driveway offering modernity with a period charm.

Spanning through three floors, this family home comprises of a separate reception and dining room leading to a spacious kitchen with generous storage space, with two entrances opening onto the rear garden. The first floor hosts three well-proportioned double bedrooms, with the master offering an en-suite and an additional family bathroom. The second floor features a spacious double bedroom with plenty of storage space. Outside, the property offers a double driveway as well as off-street parking.

Warwick Road is a sought after road located between Norbury and Thornton Heath. The nearest mainline station is located at Thornton Heath just 0.7 Miles and Norbury 1 mile both providing rail links to London Bridge and Victoria. Good schools are nearby, as are the recreational facilities of Norbury Park and Streatham Common.

Features

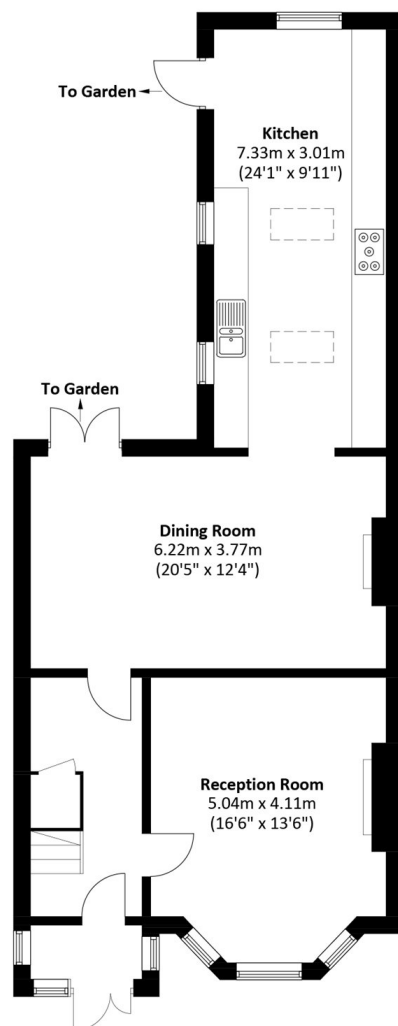
- Edwardian semi-detached
- Three bedrooms
- Driveway
- Off street parking
- High ceilings
- Period features



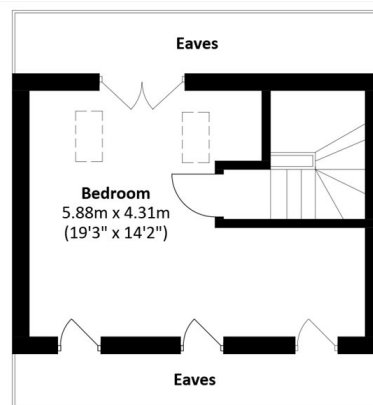




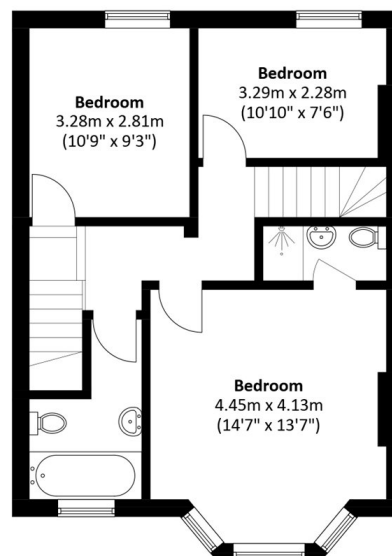
Warwick Road, Thornton Heath, CR7



Ground Floor



Second Floor



First Floor

Total area: Approx. 156.3 sq. meters (1,682.3 sq. feet)
(Excluding Eaves)