



Palace Street

London, SW1E

£7,000 per month
(£1,615.38 per week)

A laterally spacious and well laid-out two double bedroom apartment situated within a popular modern block further comprising a large reception room with direct access onto a private balcony, modern kitchen, dining room and three bathrooms.

CHESTERTONS



Palace Street

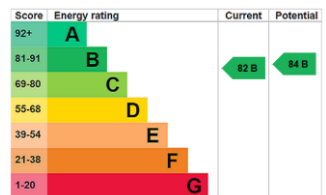
London, SW1E

- A Laterally Spacious Two Double Bedroom Apartment
- 24 Hour Concierge and Lift Access
- A Spacious Reception Room
- Large Private Balcony
- Close Proximity to Parks and Transport



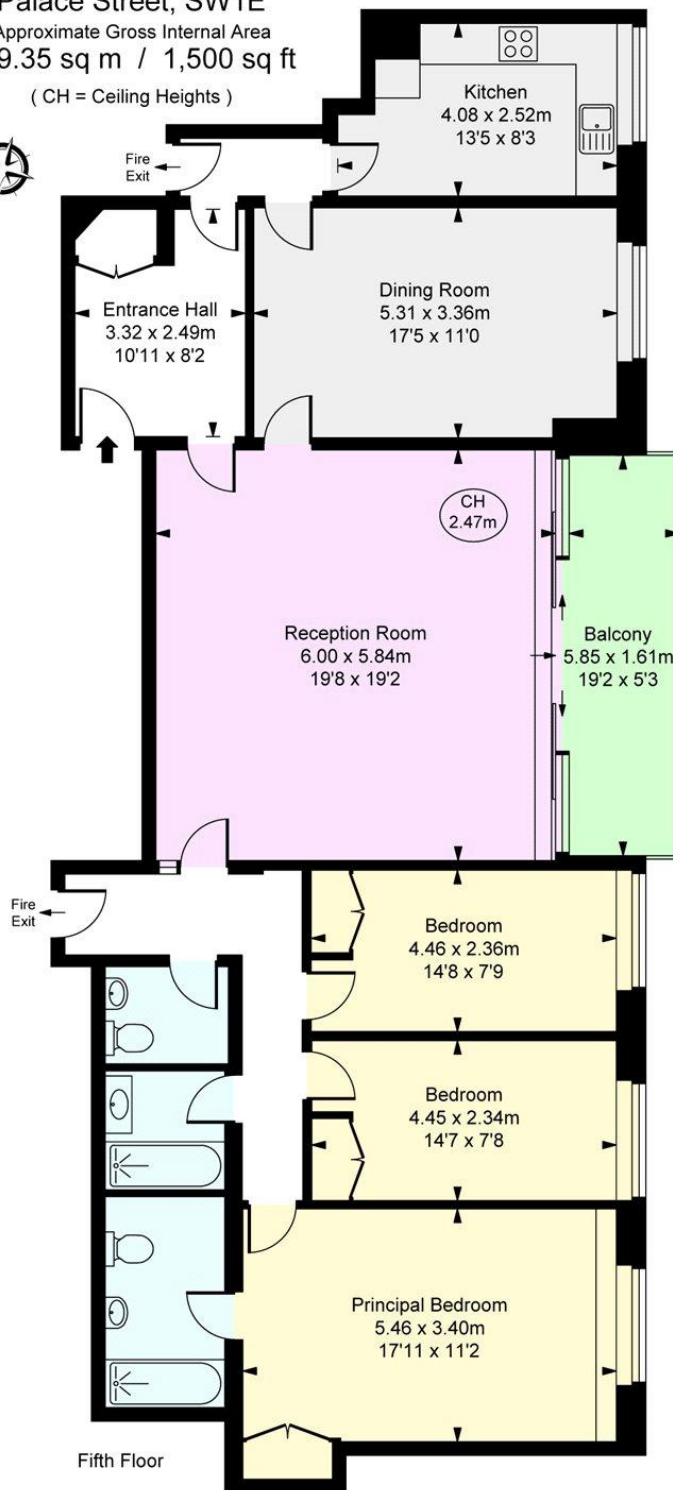
A laterally spacious and exceptionally well laid-out two double bedroom apartment, situated within a highly sought-after modern development, offering an elegant blend of contemporary design and refined comfort. The property comprises a generously proportioned reception room with direct access onto a private balcony, creating an ideal space for both relaxing and entertaining. A sleek modern kitchen flows seamlessly into a dedicated dining area, while three beautifully appointed bathrooms add to the home's sense of luxury and convenience. All bills are included in the rental.

Minimum Term: 3 months
Council Tax Band: H
EPC Rating: B



Additional tenant charges apply (fees apply to non-AST tenancies only)
 Tenancy Agreement Fee: £300
 References per Tenant/Guarantor: £60
 Inventory check (approx. £100 – £250 inc. VAT)
chestertons.co.uk/property-to-rent/applicable-fees

Palace Street, SW1E
 Approximate Gross Internal Area
 139.35 sq m / 1,500 sq ft
 (CH = Ceiling Heights)



This plan is not to scale. It is for guidance and not for valuation purposes.
 All measurements and areas are approximate only, and have been prepared in accordance with the current edition of the RICS Code of Measuring Practice.
 © Fulham Performance

Chesterton UK Services Limited trading as Chestertons for themselves and for the vendor of this property whose agents they are, give notice that (i) these particulars do not constitute any part of an offer or contract, (ii) all statements contained within these particulars are made without responsibility on the part of Chestertons or the vendor, (iii) whilst made in good faith, none of the statements contained within these particulars are to be relied upon as a statement or representation of fact, (iv) any intending purchasers must satisfy themselves by inspection or otherwise as to the correctness of each of the statements contained within these particulars, (v) the vendor does not make or give either Chestertons or any person in their employment any authority to make or give representation or warranty whatsoever in relation to this property. Wide angle lenses may be used. ©Copyright Chestertons | Chesterton Global Ltd | Registered Office 5th Floor, The Lantern, 75 Hampstead Road, London, NW1 2PL Registered Company Number 05334580.



This paper is
 100% recyclable