



## Kings Avenue, SW4

£3,100 Per calendar month

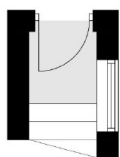
This impressive first floor lateral maisonette includes a spacious reception room, three large double bedrooms a separate kitchen with one bathroom and a private garden is perfect for three professional sharers.

The Kings Avenue rests just behind Abbeville Village with its many boutique shops, restaurants and cafés, Clapham Common underground station (Northern Line) and Brixton underground station is just a stroll away.

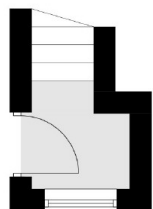
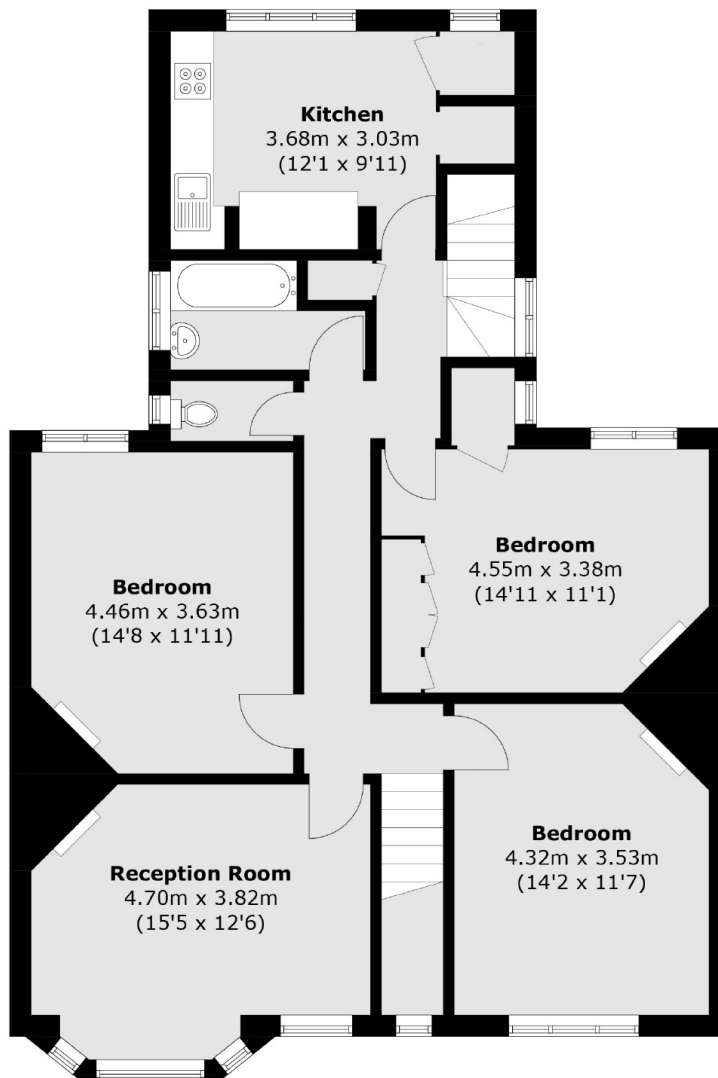
### Features

- First Floor Maisonette
- Three Double Bedrooms
- Large Reception
- Private Garden
- Wooden Flooring
- Ideal Location

# Kings Avenue, London, SW4



**Ground Floor**



**Ground Floor**

**First Floor**

Total area (approx.): 107.0 sq. m (1,151.6 sq. ft)