



Ladbroke Grove, W10

£2,150 Per calendar month

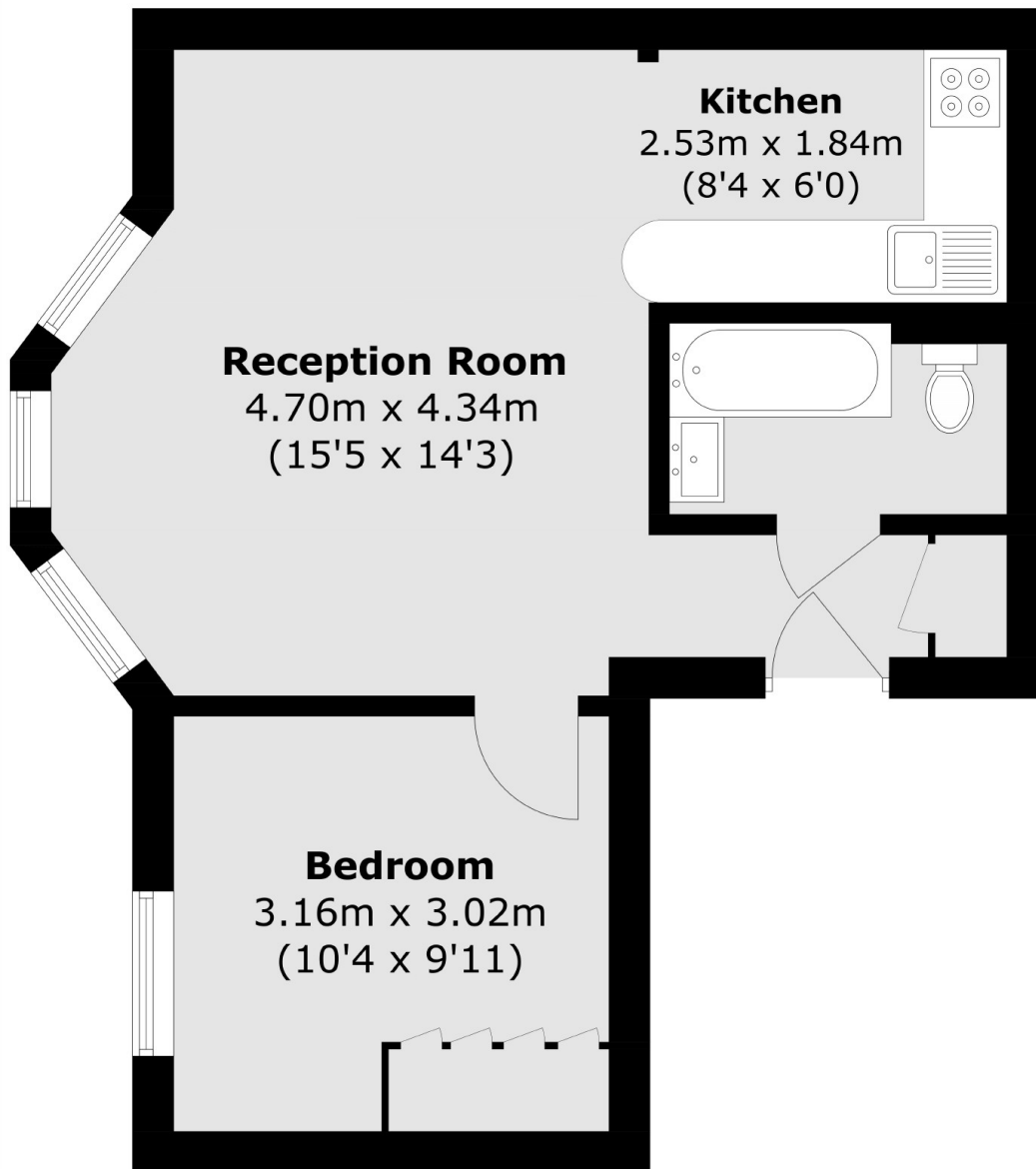
A bright and spacious one-bedroom apartment set on the first floor of a well-maintained period conversion. The property benefits from high ceilings, a semi open-plan kitchen, and excellent storage throughout, offering a well-balanced and practical living space.

Situated just moments from Ladbroke Grove Station, the property is within easy reach of the vibrant shops, cafés, bars and restaurants of Portobello Road, as well as the wider amenities of Notting Hill.

Features

- First Floor Flat
- One Bedroom
- High Ceilings
- Semi Open Plan Kitchen
- Plenty Of Storage

Ladbroke Grove, London, W10



Total area (approx.): 39.9 sq. m (429.5 sq. ft)