



## Oakley Crescent, EC1V

### £750,000

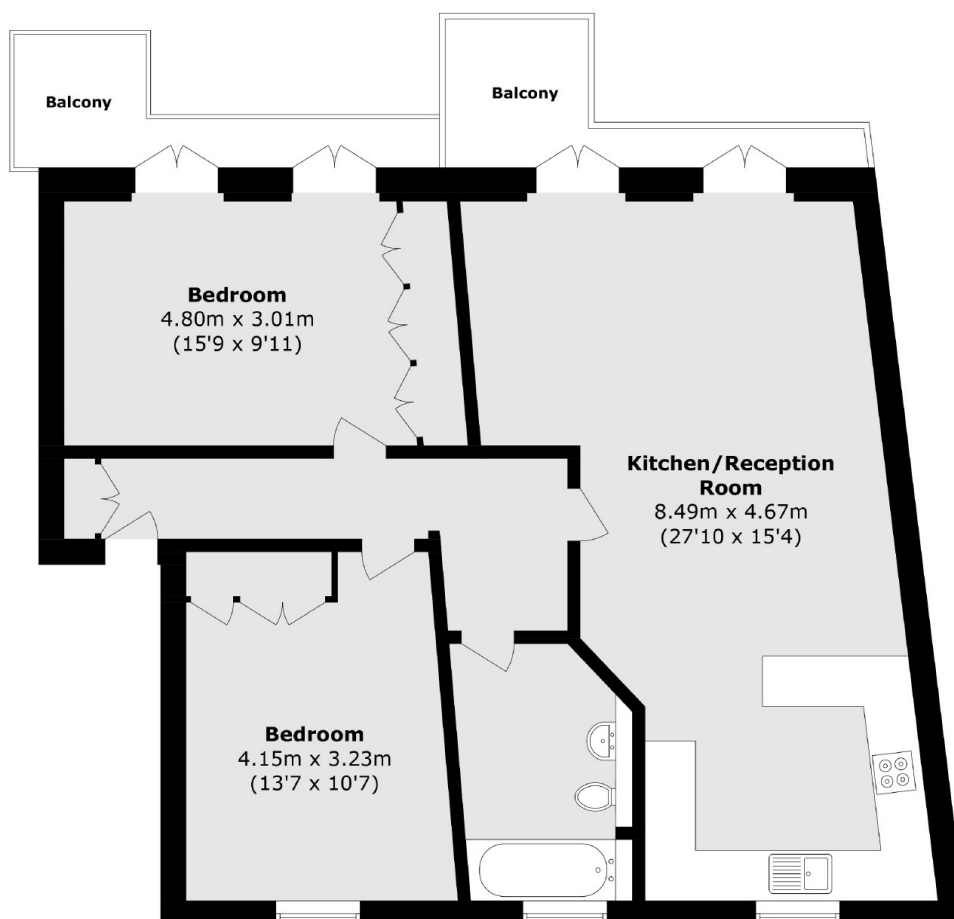
A two double bedroom neo Georgian apartment on Oakley Crescent. It has a full width south west facing terrace, open plan kitchen reception room with wood floors, family bathroom and extra storage. Offered to the market chain-free.

Oakley Crescent is just off of the City Road between it and the Regents Canal. It is a third of a mile from Angel Underground station and only a half of a mile the City of London.

### Features

- Communal Garden
- Use of Undemised Terrace
- Two Double Bedrooms
- Open Plan
- Long Lease
- Chain Free

# Oakley Crescent, London, EC1V



Total area (approx.): 76.8 sq. m (826.6 sq. ft)

Balcony Total (approx.): 9 sq. m (96.8 sq. ft)

## Dexters

Islington  
353 Upper Street  
London  
N1 0PD  
Sales  
020 7483 6373

Energy Rating: C. We aim to make our particulars both accurate and reliable. However they are not guaranteed; nor do they form part of an offer or contract. If you require clarification on any points then please contact us, especially if you're traveling some distance to view. Please note that appliances and heating systems have not been tested and therefore no warranties can be given as to their good working order.

 **RICS** | Regulated  
Estate Agent  
and Letting Agent

[dexters.co.uk](https://www.dexters.co.uk)