



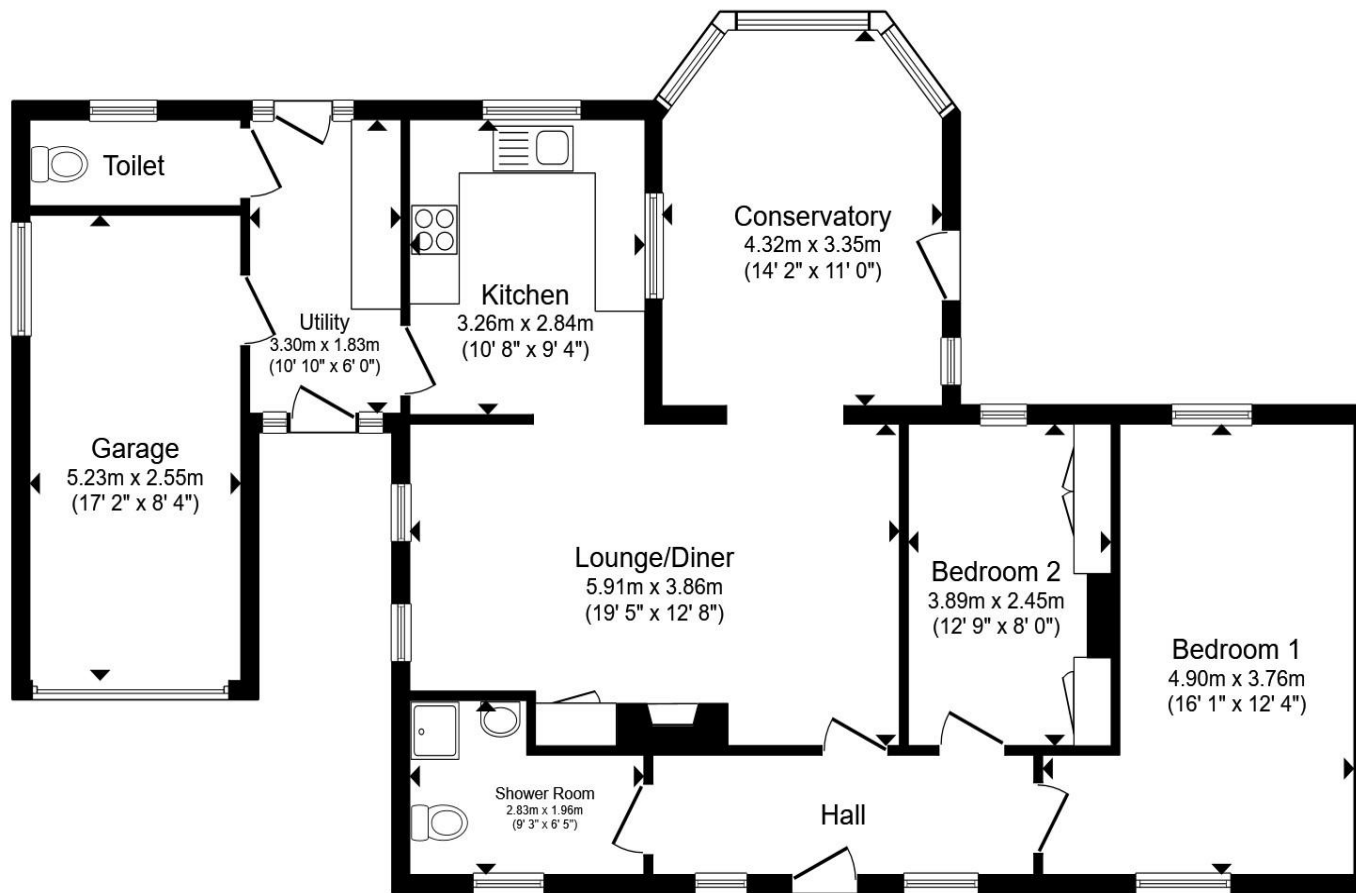
**Elmside Bungalows, Elmside, Emneth, Wisbech, PE14 8BH**

## Welcome to

### Elmside Bungalows, Elmside, Emneth, Wisbech

Located within the tranquil setting of Elmside Bungalows, Emneth, this well-positioned two bedroom detached bungalow offers a wonderful combination of space, natural light and countryside views. The accommodation includes a bright open-plan living and dining room, creating a comfortable and sociable main living space. A useful kitchen sits separately, while the sun room provides a superb additional seating area, perfectly placed to enjoy the surrounding open field views and sunlight throughout the day. There are two bedrooms, a family shower room, and a separate WC, offering practical and flexible living for a range of buyers. Outside, the property benefits from plenty of off-road parking and a low-maintenance garden, ideal for those seeking easy upkeep without compromising on outdoor enjoyment. The setting is particularly peaceful, making this an excellent choice for downsizers, retirees, or anyone seeking a quieter lifestyle. A rare opportunity in a highly desirable location - viewing is highly recommended.





**Floor Plan**

**Entrance Hall**

**Lounge / Diner**

**Kitchen**

**Utility**

**Conservatory**

**Separate Wc**

**Shower Room**

**Bedroom One**

**Bedroom Two**

**Garage**

**Agents Note:**

'There is a easement on the title, please enquire with the branch' - Private Road.

'Heating to the property is served by Oil. Please contact the branch for more details'

'Waste from the property is served by Shared Septic Tank. Contact the branch for more details'

Total floor area 105.0 m<sup>2</sup> (1,130 sq.ft.) approx

This floor plan is for illustrative purposes only. It is not drawn to scale. Any measurements, floor areas (including any total floor area), openings and orientation are approximate. No details are guaranteed, they cannot be relied upon for any purpose and they do not form part of any agreement. No liability is taken for any error, omission or misstatement. A party must rely upon its own inspection(s). Powered by [www.propertybox.io](http://www.propertybox.io)



## Welcome to

# Elmside Bungalows, Elmside, Emneth Wisbech

- Two bedroom detached bungalow
- Stunning open field views
- Sun all day long
- Open-plan living/dining room
- Shower room plus separate WC
- Plenty of off-road parking
- Low-maintenance garden
- Quiet and peaceful location

Tenure: Freehold EPC Rating: E  
Council Tax Band: A

## £205,000



Please note the marker reflects the  
postcode not the actual property

**view this property online** [williambrown.co.uk/Property/WSB127776](http://williambrown.co.uk/Property/WSB127776)



Property Ref:  
WSB127776 - 0004

1. MONEY LAUNDERING REGULATIONS Intending purchasers will be asked to produce identification documentation at a later stage and we would ask for your co-operation in order that there is no delay in agreeing the sale. 2. These particulars do not constitute part or all of an offer or contract. 3. The measurements indicated are supplied for guidance only and as such must be considered incorrect. Potential buyers are advised to recheck measurements before committing to any expense. 4. We have not tested any apparatus, equipment, fixtures or services and it is in the buyers interest to check the working condition of any appliances. 5. Where an EPC, or a Home Report (Scotland only) is held for this property, it is available for inspection at the branch by appointment. If you require a printed version of a Home Report, you will need to pay a reasonable production charge reflecting printing and other costs. 6. We are not able to offer an opinion either written or verbal on the content of these reports and this must be obtained from your legal representative. 7. Whilst we take care in preparing these reports, a buyer should ensure that his/her legal representative confirms as soon as possible all matters relating to title including the extent and boundaries of the property and other important matters before exchange of contracts.

William H Brown is a trading name of Sequence (UK) Limited which is registered in England and Wales under company number 4268443, Registered Office is Cumbria House, 16-20 Hockliffe Street, Leighton Buzzard, Bedfordshire, LU7 1GN. VAT Registration Number is 500 2481 05.



william h brown



**01945 464451**



[Wisbech@williambrown.co.uk](mailto:Wisbech@williambrown.co.uk)



20 High Street, WISBECH, Cambridgeshire,  
PE13 1DE



[williambrown.co.uk](http://williambrown.co.uk)