

## Charlotte Place, W1T

£657 Per week

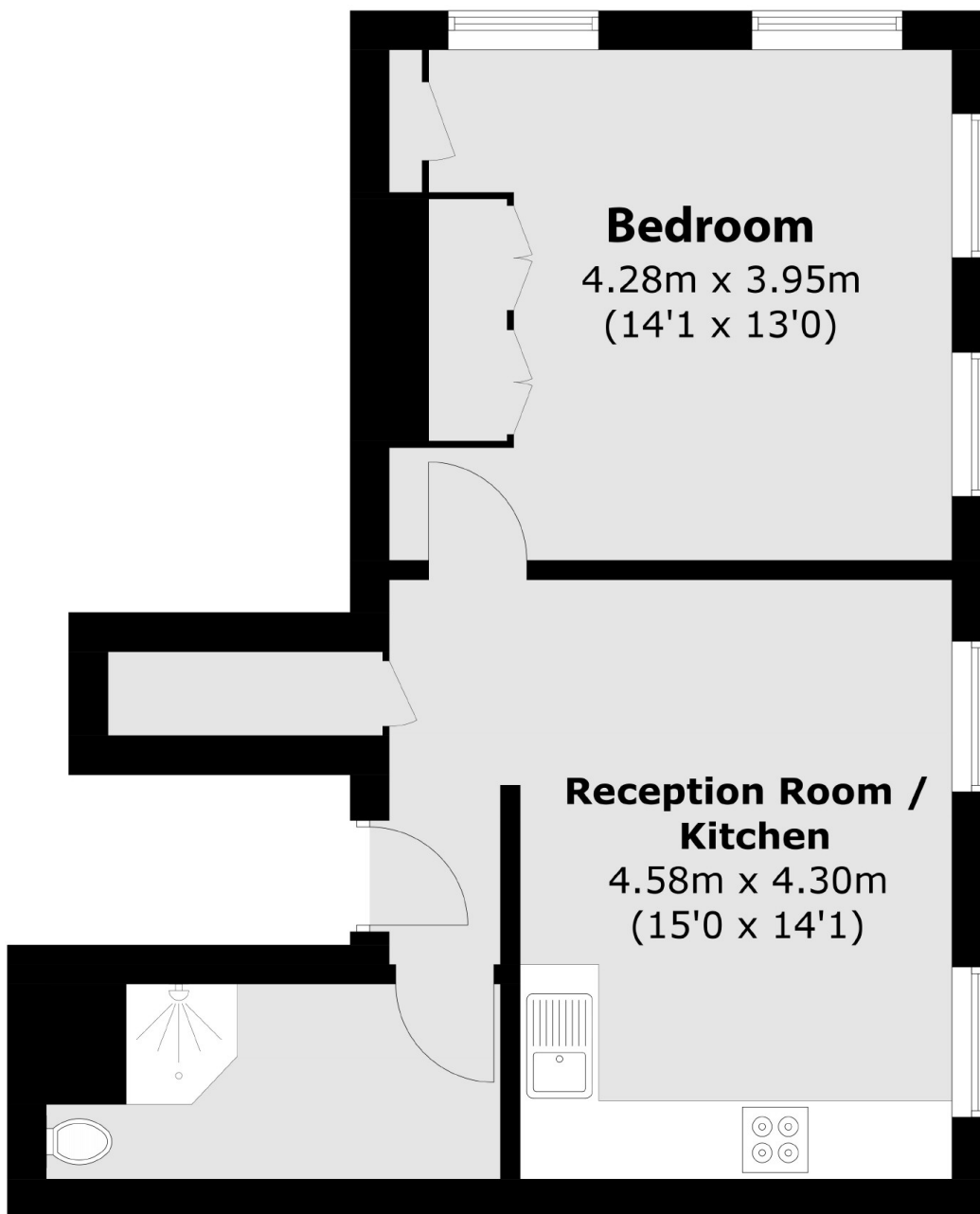
This exceptionally bright one bedroom apartment has wooden floors throughout along with an open plan fully fitted kitchen. The flat has a modern finish and is centrally located just moment from the Oxford Street.

Charlotte Place is a vibrant and trendy pedestrianised street in the heart of fashionable Fitzrovia. The nearest Undergrounds are Goodge Street and Tottenham Court Road.

### Features

- One Bedroom
- Central Location
- Wooden Floors
- Fitted Kitchen
- Open Plan
- Modern

# Charlotte Place, London, W1T



Total area (approx.): 42.5 sq. m (457.5 sq. ft)