



Penwerris Avenue, TW7

£1,200,000

Dexters



Penwerris Avenue, TW7

Situated on the highly desirable Penwerris Avenue in Osterley, this exceptional five bedroom, two bathroom semi-detached family home has been thoughtfully extended and beautifully renovated to an outstanding standard throughout. Arranged over three floors and offering in excess of 1,800 sq ft of versatile living accommodation, together with a substantial garden outbuilding/gym of approximately 215 sq ft, this impressive property combines period charm with contemporary luxury.

Upon entering, you are welcomed by a spacious and elegant entrance hallway, setting the tone for the quality found throughout the home. To the front, a beautifully presented reception room features a striking bay window. The heart of the home is undoubtedly the stunning extended open-plan kitchen, dining and family room, designed for modern living and entertaining. This remarkable space boasts stylish finishes, ample dining and seating areas, and bi-fold doors that open seamlessly onto a generous garden, complete with a versatile outbuilding. The first floor comprises three well-proportioned bedrooms and a beautifully appointed family bathroom. The thoughtfully designed loft conversion provides two further bedrooms and an additional contemporary family bathroom, creating ideal accommodation for larger families or guests. Further benefits include off-street parking for multiple vehicles via a wide private driveway and the advantage of being offered to the market with no onward chain.

Features

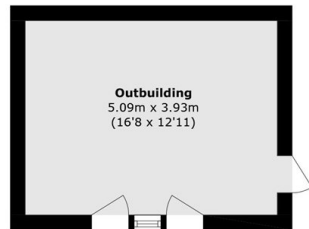
- Semi-Detached Period House
- Five Bedrooms
- Two Bathrooms & Guest WC
- Immaculately Renovated
- Loft & Rear Extended
- Driveway For Multiple Cars





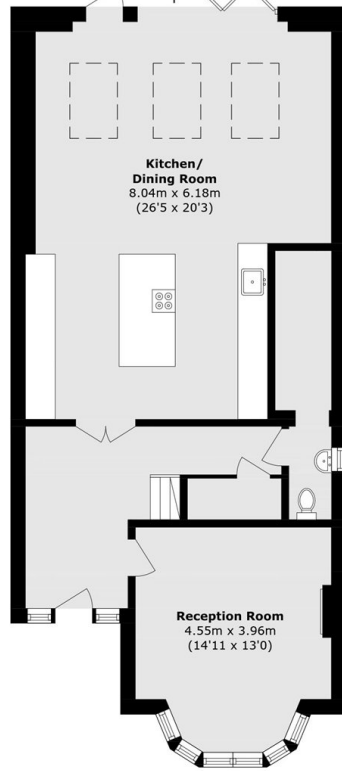


Penwerris Avenue, Isleworth, TW7

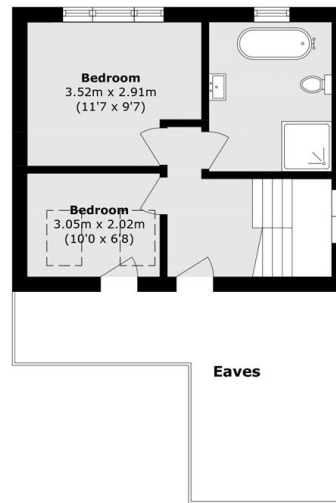


Ground Floor

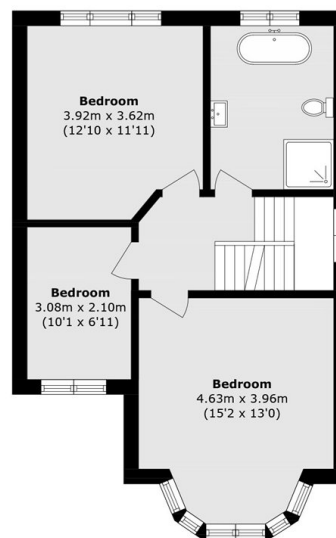
To Garden



Ground Floor



Second Floor



First Floor

Total area (approx.): 168.4 sq. m (1812.6 sq. ft)
Outbuilding area (approx.): 20.0 sq. m (215.2 sq. ft)
(Excluding Eaves)