



ABBOTS MANOR, SW1V

£450,000

Two bedrooms
Spacious reception room
Separate kitchen
Excellent location
Natural light
Energy rating: d

@marshandparsons
marshandparsons.co.uk

MARSH &
PARSONS



ABOUT THE PROPERTY

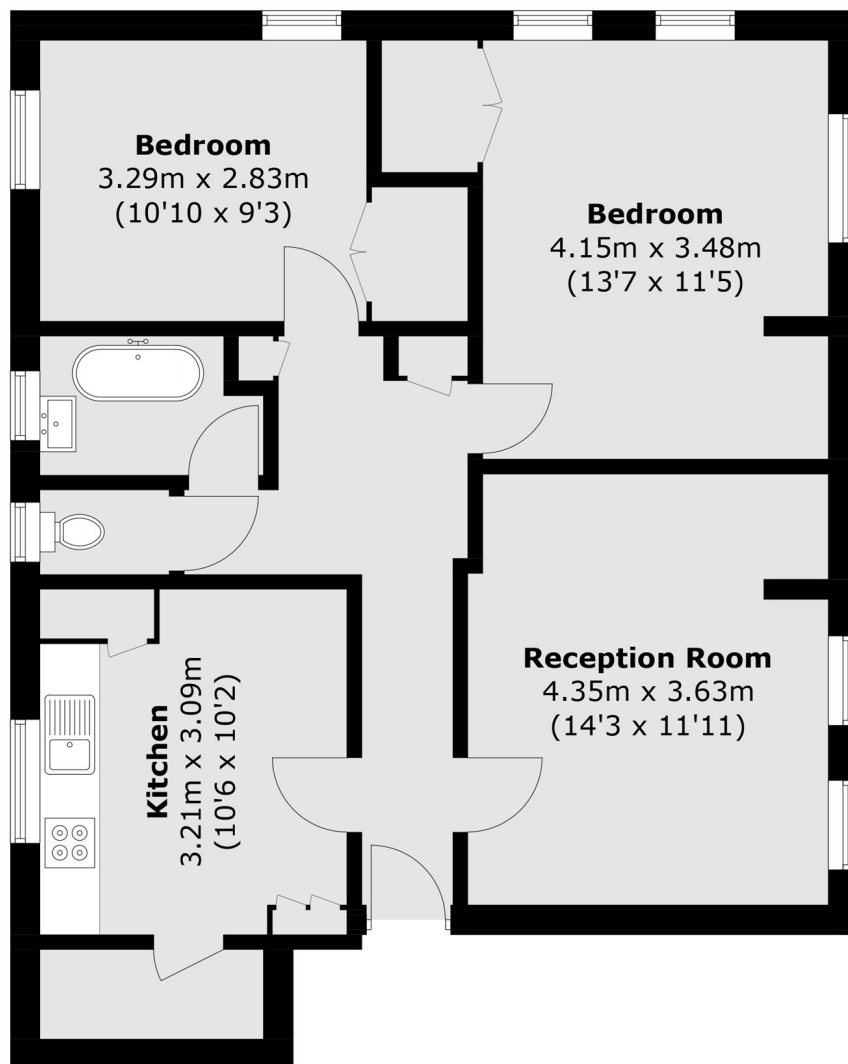
A comfortable two-bedroom ground floor apartment in Fonthill House, SW1V, offering around 781 sq ft of well-laid-out living space in the heart of Pimlico.

The flat has a simple, practical feel to it. There's a good-sized living room that works well as a place to relax or have friends over, with enough space to comfortably separate dining and seating areas. The kitchen is set just off the main living space and is straightforward and functional, with everything you need within easy reach.

Outside, you're in a great central location in Pimlico, with local cafés, shops, and transport links all close by, so day-



STEP INSIDE ABBOTS MANOR



Ground Floor

Total area (approx.): 72.6 sq. m (781.4 sq. ft)

Pimlico & Westminster
020 7590 0800

Energy Rating: D We aim to make our particulars both accurate and reliable. However, they are not guaranteed; nor do they form part of an offer or contract. If you require clarification on any points then please contact us, especially if you're traveling some distance to view. Please note that appliances and heating systems have not been tested and therefore no warranties can be given as to their good working order

MARSH &
PARSONS