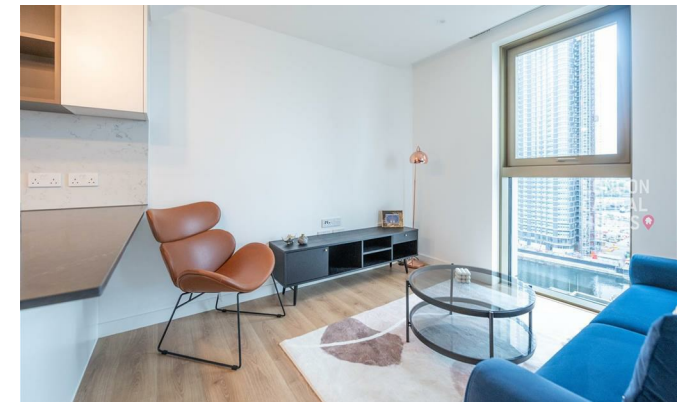


**LONDON
VICTORIA
GROUPS** 



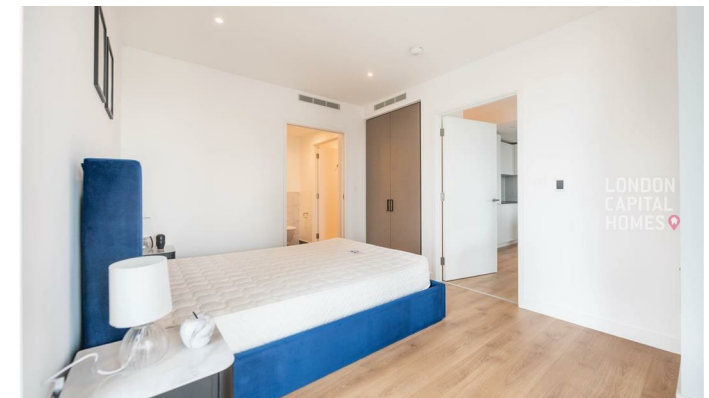
222 Marsh Wall

, London E14 9EN

- Contemporary Open-Plan Kitchen
- Private Balcony
- 24-Hour Concierge
- EPC-B
- Floor-to-Ceiling Windows
- On-Site Gym
- Close to Canary Wharf Stations
- CTB-E

£2,840 Per Month

Local Authority **Tower Hamlets**
 Council Tax Band **E**
 EPC Rating **B**



London Office Office
 Spaces Victoria, 25 Wilton Road, Pimlico,
 London, SW1V 1LW

Contact
 020 3084 3094
XL@londonvictoriagroups.co.uk
www.londonvictoriagroups.co.uk

Agents Note: Whilst every care has been taken to prepare these particulars, they are for guidance purposes only. All measurements are approximate and for general guidance purposes only and whilst every care has been taken to ensure accuracy, they should not be relied upon and potential buyers/tenants are advised to recheck the measurements.