



PRINCESS COURT, W2

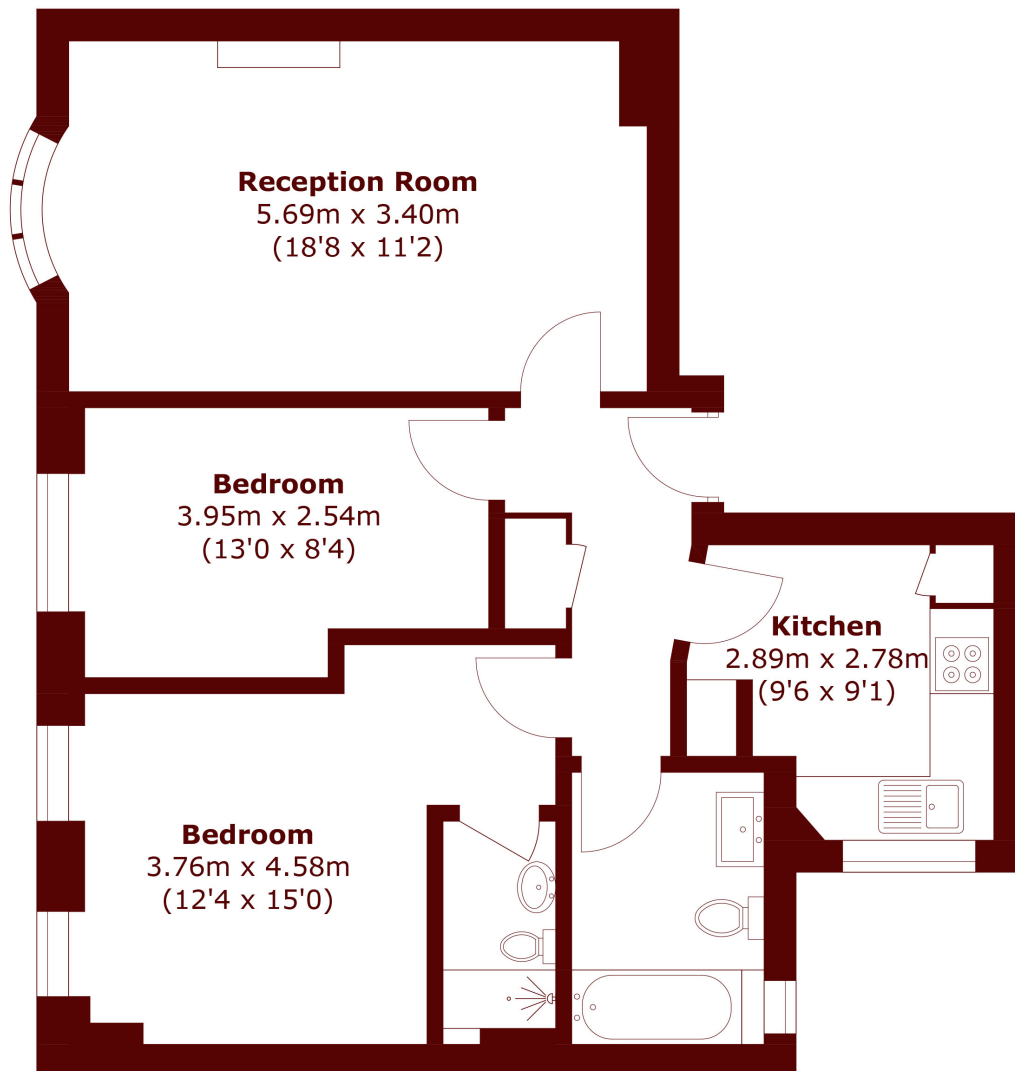
£865 per week (£3,748 per month)

A stunning two-bedroom lateral apartment set within a prestigious mansion building just moments from Hyde Park.

Two bedrooms
Two bathrooms
Excellent condition

Lift/porter
Desirable building
Prime location

STEP INSIDE PRINCESS COURT



Total area (approx.): 63.5 sq. m (683.5sq. ft)

Notting Hill
020 7313 6910

Energy Rating: C We aim to make our particulars both accurate and reliable. However, they are not guaranteed; nor do they form part of an offer or contract. If you require clarification on any points then please contact us, especially if you're traveling some distance to view. Please note that appliances and heating systems have not been tested and therefore no warranties can be given as to their good working order

MARSH &
PARSONS