

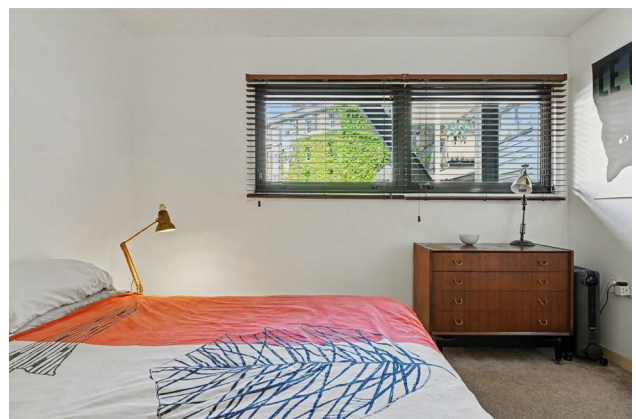
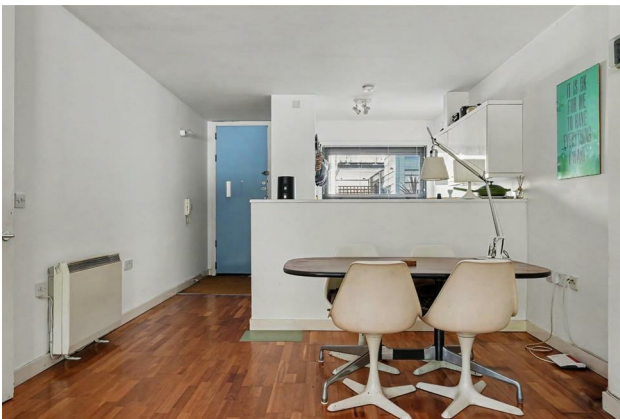
HUNTERS®

HERE TO GET *you* THERE

Northwold Road, London, N16

Asking Price £525,000

Property Images



HUNTERS®

HERE TO GET *you* THERE

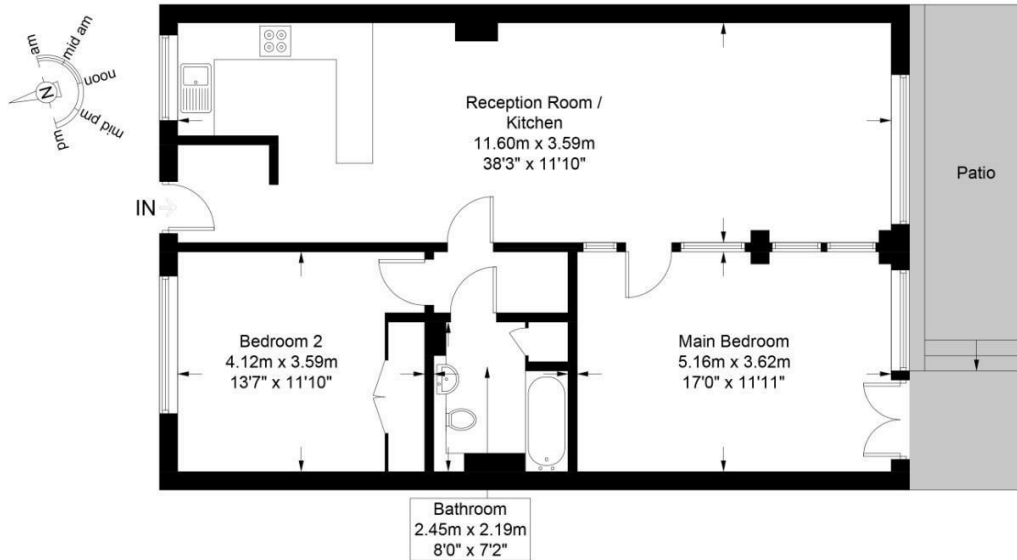
Property Images



Floorplan

Northwold Road, N16

Approximate Gross Internal Area = 932 sq ft / 86.58 sq m



Raised Ground Floor



This plan is for layout guidance only and is not drawn to scale unless stated. All dimensions, including windows, doors, and the Total Gross Internal Area (GIA), are approximate. For precise measurements, please consult a qualified architect or surveyor before making any decisions based on this plan.

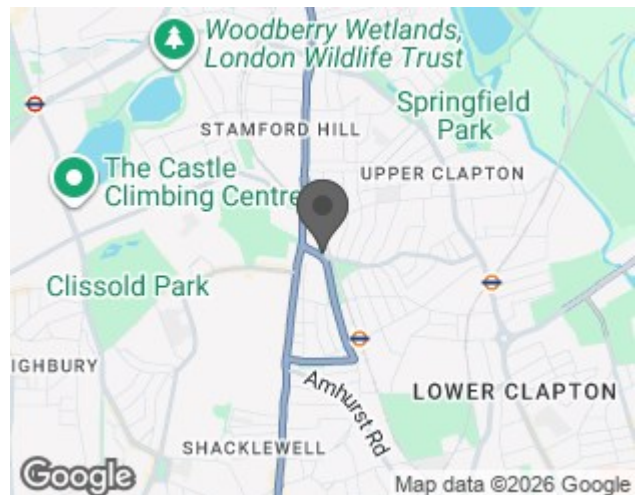


Certified Property Measurer

EPC

Energy Efficiency Rating		Current	Potential
Very energy efficient - lower running costs			
(92 plus) A			
(81-91) B			
(69-80) C		75	79
(55-68) D			
(39-54) E			
(21-38) F			
(1-20) G			
Not energy efficient - higher running costs			
England & Wales	EU Directive 2002/91/EC		

Map



Details

Type: Apartment - Purpose Built Beds: 2 Bathrooms: 1 Receptions: 1 Tenure: Leasehold

Summary

Available chain free and to view by appointment only, this exceptionally spacious two bedroom ground floor apartment is presented in excellent condition throughout, boasting approximately 932 sq. ft. (86.58 sqm) of internal accommodation, allocated off street parking and a superb location.

The property comprises an impressive 38 ft. dual aspect open plan kitchen/reception room, creating a wonderfully bright and airy living space ideal for both everyday living and entertaining, principal bedroom, generous double guest bedroom with built in storage, and a bathroom. The property further benefits from allocated off street parking, double glazing and excellent storage throughout.

Raines Court is located on Northwold Road, moments from the many bars, restaurants and coffee houses of Stoke Newington Church Street and High Street, as well as being a stone's throw from the green space of Stoke Newington Common and a short walk from the stunning open spaces of Clissold Park, Springfield Park and Abney Park.

Transport links include Stoke Newington Station (Overground) and Rectory Road Station (Overground) for quick trips into London and a variety of bus routes into The City and West End.

Features

- Available Chain Free
- Ground Floor Apartment
- Approx. 932 Sq. Ft.
- Two Double Bedrooms
- 38 Ft. Dual Aspect Living Space
- Allocated Off Street Parking
- Excellent Storage Throughout
- Moments from Stoke Newington Common
- Close to Church Street
- Excellent Transport Links