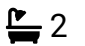



Somerset Road, Kilnwood Vale

Offers Over £400,000

 3  2  1



A beautifully presented Three Bedroom Family Home located in a Popular Modern Development, offering Allocated Parking and No Onward Chain.

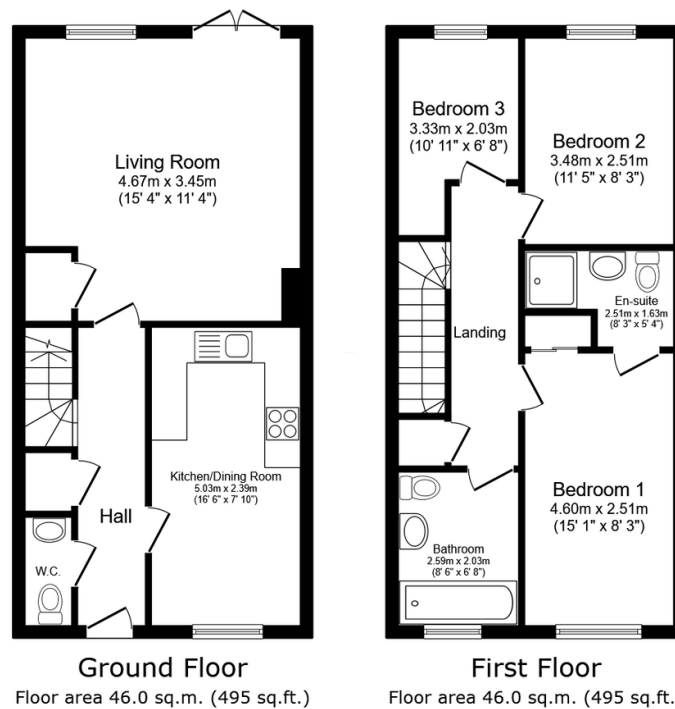
Tenure: Freehold

Council Tax: Band D

EPC: Current C - Potential B

Key Features

- Watch Our Video Tour
- No Onward Chain
- 15'4" x 11'4" Living Area
- 16'6" Kitchen Dining Area
- Luxurious Family Bathroom
- Modern Three Bedroom Family Home
- Allocated Parking
- Stylish En Suite
- Convenient Ground Floor WC
- Close To Village School



Total floor area: 92.0 sq.m. (990 sq.ft.)

This floor plan is for illustrative purposes only. It is not drawn to scale. Any measurements, floor areas (including any total floor area), openings and orientations are approximate. No details are guaranteed, they cannot be relied upon for any purpose and do not form any part of any agreement. No liability is taken for any error, omission or misstatement. A party must rely upon its own inspection(s). Powered by www.Propertybox.io