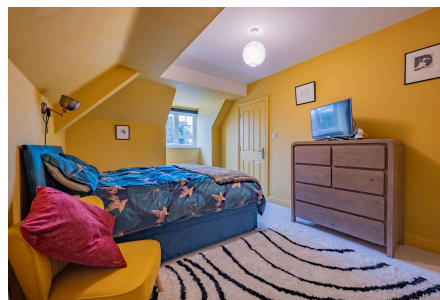


6, Rosemary Place Maidstone Road, Paddock Wood

Offers Over £300,000

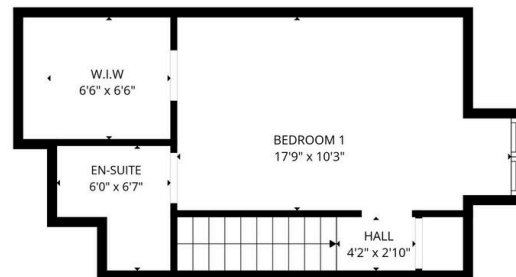
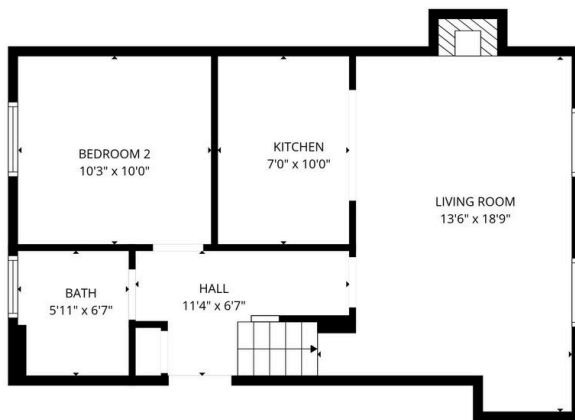
🛏 2 🍷 2 🚗 1



A stunning and spacious two-bedroom split-level maisonette, finished to an exquisite standard throughout. Featuring a large top-floor principal suite with ensuite and walk-in wardrobe, a stylish open-plan living space, and excellent parking provision, this home is perfectly suited for modern living. This rare find is situated in the sought after Rosemary Place development in Paddock Wood and is just a few minutes stroll from the main line train station. Offered with a share of freehold and a long lease of approximately 102 years. Early viewings are highly recommended, for further information please contact Jennifer Edmonds.

Key Features

- Full video tour available to watch
- Exceptionally large top-floor principal bedroom
- Beautifully decorated throughout with bold, vibrant interiors
- Built-in storage
- Carport with two allocated parking spaces and small grass area
- Two-bedroom split-level maisonette
- Ensuite bathroom and walk-in wardrobe to principal suite
- Open-plan kitchen, living, and dining area
- Share of freehold with 102 years remaining on lease
- Please quote reference JE1408 upon making an enquiry.



TOTAL: 794 sq. ft
 1st floor: 508 sq. ft, 2nd floor: 286 sq. ft
 EXCLUDED AREAS: FIREPLACE: 8 sq. ft, LOW CEILING: 17 sq. ft, WALLS: 88 sq. ft

FLOOR PLAN CREATED BY CUBICASA APP. MEASUREMENTS DEEMED HIGHLY RELIABLE BUT NOT GUARANTEED.