



Parkside Road, Tranmere

£725 PCM



LESLEY HOOKS
ESTATE AGENTS

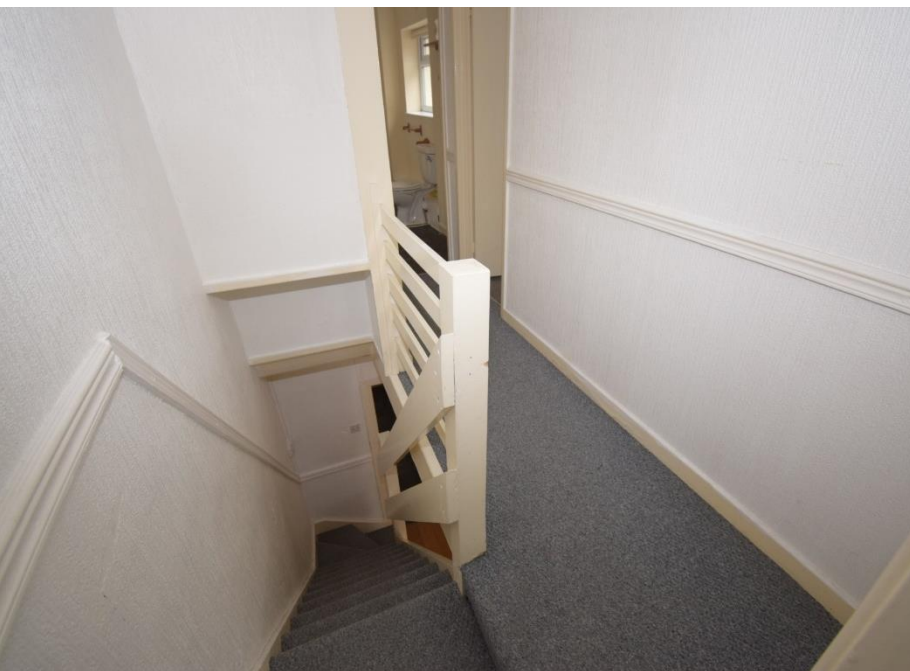




This mid-terraced house offers deceptively spacious accommodation. Having uPVC double glazing and combi fired gas central heating the layout briefly comprises porch, open plan lounge dining room and a fitted kitchen. Upstairs there are two bedrooms and a good size bathroom with three piece suite in white. To the rear of the property there is a small enclosed courtyard. Situated in a popular residential area, the property is within walking distance of local shops, schools and transport links. Birkenhead town centre with its array of shops and stores is a ten minute drive away. Council Tax Band A. EPC Rating D

Entrance Hall

Door through to lounge, laminate floor.



Lounge/ Dining Room

Bay window to the front, window to the rear, laminate floor, feature gas fire place.

Kitchen

Fitted kitchen with a range of wall and base units, space and plumbing for under counter appliances, window to the side, door out to the rear courtyard.

Bedroom One

Window to the front.

Bedroom Two

Window to the rear.

Bathroom

Frosted glass window to the side, three piece suite in white comprising bath with shower over, wash hand basin and wc.

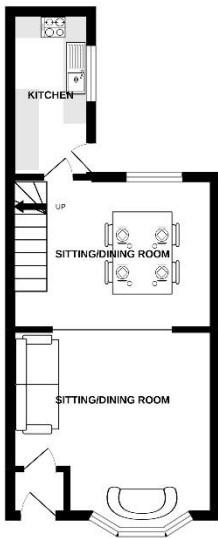
Courtyard

Enclosed paved rear courtyard, gate to alleyway.

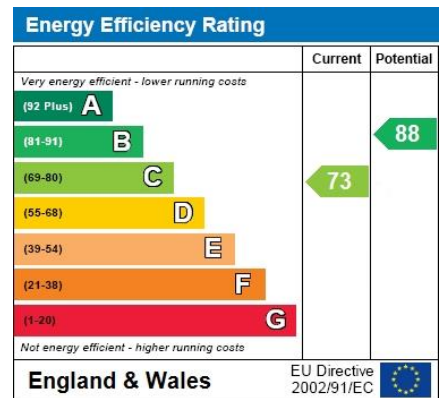




GROUND FLOOR



1ST FLOOR



Contact Us:

0151 644 6000

lesley@lesleyhooks.co.uk

6 Church Road, Bebington,

Wirral, Merseyside, CH63 7PH

These plans are for information only and do not constitute an offer of any financial product. They are provided for information only and do not constitute an offer of any financial product. They are provided for information only and do not constitute an offer of any financial product. They are provided for information only and do not constitute an offer of any financial product.

Disclaimer: Whilst these details are thought to be correct, their accuracy cannot be guaranteed and do not form part of any contract. It should be noted that we have not tested any fixtures, fittings, equipment, apparatus or services, therefore we cannot verify that they are in working order of fit for purpose. Solicitors should be used to confirm that any moveable items described within these details are in fact part of the sale agreement. While we try to ensure measurements are correct they are not guaranteed and purchasers are advised to take their own measurements before ordering any fixtures and fittings. Please note: if you are buying a leasehold property, please ensure that all details and conditions of the lease are checked with your solicitor prior to you incurring any costs as additional fees could be incurred for items such as leasehold packs.