



Meadowcroft

99 Wroslyn Road, Freeland, Oxfordshire OX29 8HL

Meadowcroft, 99 Wroslyn Road, Freeland, Oxfordshire OX29 8HL

A very attractive 3 bedroom detached house, set well back from the road, in large well-established gardens, and situated in this very appealing location in the village of Freeland. The property has spacious and light living space throughout with lovely size rooms across the ground floor, including an entrance porch, hallway, living room, dining room, conservatory and study, a fitted kitchen, utility room and cloakroom, together with 3 double bedrooms, an ensuite, and family bathroom, and further benefits from double glazing and oil central heating. The front gardens are mature with trees and shrubs, approached by a long, block paved driveway; offering plenty of parking for several vehicles, and a double width garage with electric up and over door. The large and mature rear gardens are extremely private, with fencing and hedging, and backing onto farmland and fields.

Material Information - sourced from Ofcom:

All mains are connected - except gas. Ultrafast broadband is available. Mobile & Data Signals - outdoor: good for EE, Three & Vodafone.

Freeland is a popular village within easy reach of Witney and Woodstock, with its own primary school, which continues to maintain an excellent reputation, a church and a public house. Long Hanborough is close by, with further facilities including a Co-op store, a doctors' surgery and a train station with direct access to Oxford and Paddington London.

Directions

From Witney town centre, proceed along Langdale Gate, turning left at the roundabout onto Witan Way. Follow this road along to the traffic lights, turning right onto High Street. Proceed over the mini roundabout onto Bridge Street. Proceed straight over the double mini roundabouts onto Woodstock Road. Continue along to the 'T' junction, turning left onto the A4095. Pass the village of North Leigh, and continue on to Freeland. On entering Freeland, turn right into Wroslyn Road. Meadowcroft can be found after a distance on the left hand side.

Draft details - may be subject to alterations. 17D26





GROUND FLOOR

Entrance Porch

Entrance Hall

Cloakroom

Living Room

Kitchen

Utility Room

Dining Room

Study

Conservatory

Double Glazing

Oil Central Heating

OUTSIDE

Private Gardens

Backing Onto Farmland & Fields

Double Garage (with electric door)

Ample Driveway

FIRST FLOOR

3 Large Bedrooms

Ensuite

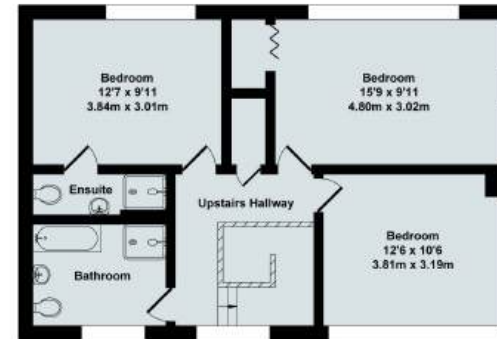
Family Bathroom

Price £800,000 Freehold
WODC Tax Band F / EPC Rating: 39/E





Ground Floor



First Floor

99 Wroslyn Road, Freeland

Total Approx. Floor Area 2205 Sq.Ft. (204.85 Sq.M.)

All items illustrated on this plan are included in the "Total Approx Floor Area"

Contact:

52 Market Square, Witney, Oxfordshire, OX28 6AF

Tel: 01993 772000 Email: witney@thomasmerrifield.co.uk

Importance Notice

Thomas Merrifield and their clients give notice that:

1. They are not authorised to make or give any representations or warranties in relation to the property either here or elsewhere, either on their own behalf or on behalf of their client or otherwise. They assume no responsibility for any statement that may be made in these particulars. These particulars do not form part of any offer or contract and must not be relied upon as statements or representations of fact.

2. Any areas, measurements or distances are approximate. The text, photographs and plans are for guidance only and are not necessarily comprehensive. It should not be assumed that the property has all necessary planning, building regulation or other consents and Thomas Merrifield have not tested any services, equipment or facilities. Purchasers must satisfy themselves by inspection or otherwise.