



Watford Way, NW4

£325,000

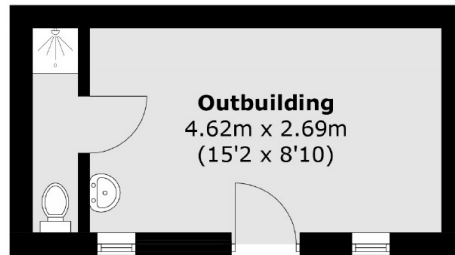
A fantastic two bedroom ground floor garden flat. The property has a shared garden, and benefits from off-street parking and an outbuilding.

The property is within easy reach of Hendon, Mill Hill and Finchley and excellent access to the M1, A41, A1 and the A406 and is nearby Middlesex University.

Features

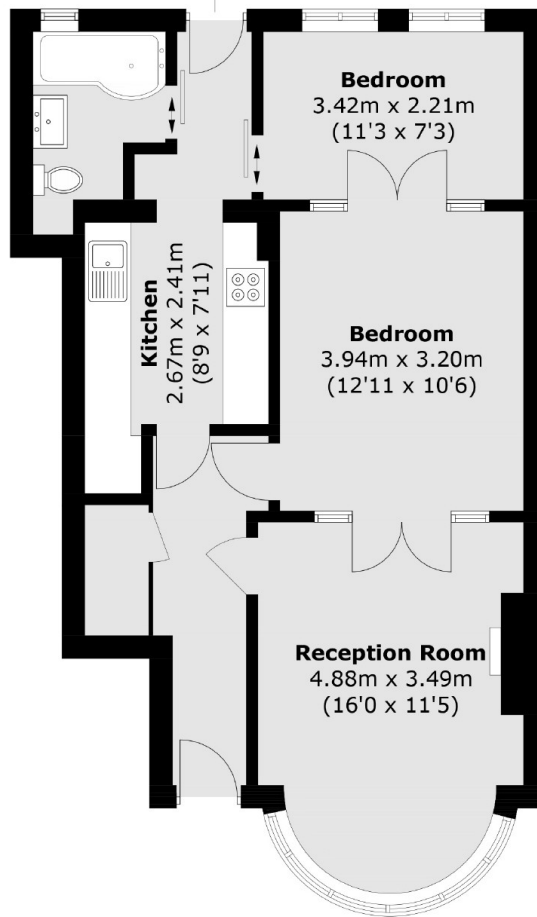
- Maisonette
- Two Bedrooms
- Parking
- Communal Garden
- Conversion
- Great Condition

Watford Way,
London, NW4



(Not Shown In Actual
Location / Orientation)

To Garden



Total area (approx.): 60.0 sq. m (645.8 sq. ft)
Outbuilding: 14.6 sq. m (157.1 sq. ft)