



ASPIRE

— TO MOVE —



Alfred Street, Bath, BA1

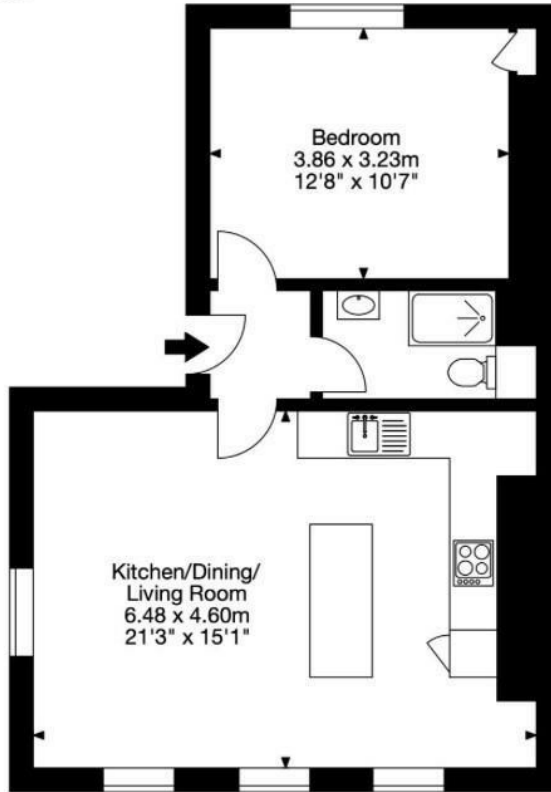
Alfred Street sits between Lansdown Road, The Circus, and The Royal Crescent, one of the most historic and architecturally appealing areas in the city. Bath Spa station, a mile away, offers mainline rail links to London Paddington from 90 minutes and Bristol (15 minutes) and the South West.

- First Floor, 1 bedroom apartment
- Available 28th March
- Newly refurbished
- Great location
- Holding deposit - £346.00
- Council Tax Band B - £1722.41
- Unfurnished
- Video tour available

£1,500 PCM

Floor Plans

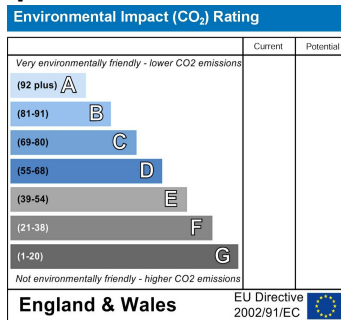
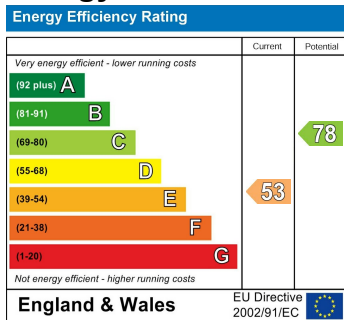
Flat 2, 1 Alfred Street, Bath BA1 2QU
 Gross Internal Area (Approx.)
 47 sq m / 512 sq ft



First Floor

Capture Property Marketing 2024. Drawn to RICS guidelines. Not drawn to scale. Plans for illustration purposes only. All features, door openings, and window locations are approximate. All measurements and areas are approximate and should not be relied on as a statement of fact. **Capture.**

Energy Performance Graph



These particulars, whilst believed to be accurate are set out as a general outline only for guidance and do not constitute any part of an offer or contract. Intending purchasers should not rely on them as statements of representation of fact, but must satisfy themselves by inspection or otherwise as to their accuracy. No person in this firm's employment has the authority to make or give any representation or warranty in respect of the property.