



Portobello Road  
London, W11

CHESTERTONS







SHORT LET - Located in the heart of a vibrant town of Notting Hill, this charming and cosy period apartment on the first floor offers a unique blend of character and modern comforts.

The property boasts three well-proportioned bedrooms, each flooded with natural light, creating a warm and inviting atmosphere throughout. Step outside onto the private roof terrace and enjoy stunning views of the town skyline, perfect for relaxing or entertaining guests. The apartment's convenient location provides easy access to local amenities, shops, and transport links, making it ideal for those seeking a convenient urban lifestyle.

With its period features, bright interiors, and inviting atmosphere, this property offers a perfect blend of character and modern convenience. Don't miss out on the chance to make this charming apartment your new home. Contact us today to arrange a viewing.

- Three bedrooms
- Two bathrooms
- Roof Terrace
- First floor
- Period

### £6,000 pcm

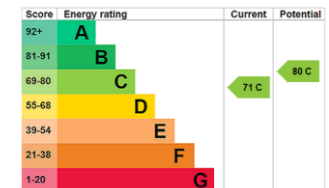
Additional tenant charges apply (fees apply to non-AST tenancies only)

Tenancy Agreement Fee: £300

References per Tenant/Guarantor: £60

Inventory check (approx. £100 – £250 inc. VAT)

[chestertons.co.uk/property-to-rent/applicable-fees](https://www.chestertons.co.uk/property-to-rent/applicable-fees)



**Minimum Term:** 1 months  
**Deposit Required:** £5,538.46  
**Local Authority:** Kensington and Chelsea  
**Council Tax Band:** E  
**EPC Rating:** C

### Chestertons Notting Hill Lettings

30 Ledbury Road  
 Notting Hill  
 London  
 W11 2AB

[nottinghilllettingsusers@chestertons.co.uk](mailto:nottinghilllettingsusers@chestertons.co.uk)  
 02030408588



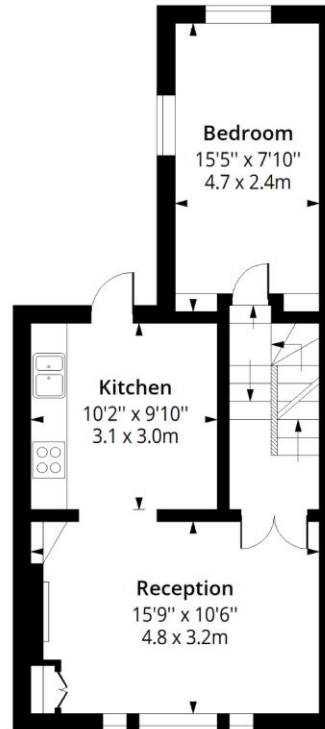
# Portobello Road, W11

Approx. Gross Internal Area 877 Sq Ft - 81.47 Sq M



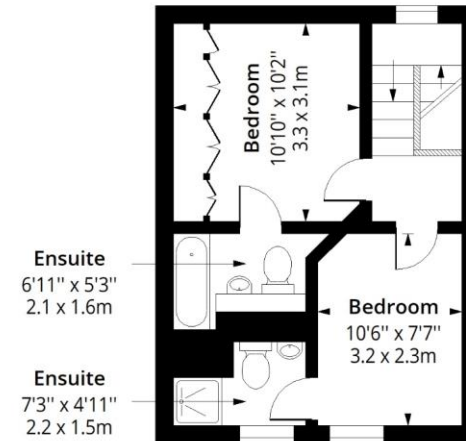
## Ground Floor

Floor Area 74 Sq Ft - 6.87 Sq M



## First Floor

Floor Area 465 Sq Ft - 43.20 Sq M



## Second Floor

Floor Area 338 Sq Ft - 31.40 Sq M



Measured according to RICS IPMS2. Floor plan is for illustrative purposes only and is not to scale. Every attempt has been made to ensure the accuracy of the floor plan shown, however all measurements, fixtures, fittings and data shown are an approximate interpretation for illustrative purposes only. 1 sq m = 10.76 sq feet.

lpaplus.com

Date: 19/11/2025

Chesterton UK Services Limited trading as Chestertons for themselves and for the vendor of this property whose agents they are, give notice that (i) these particulars do not constitute any part of an offer or contract, (ii) all statements contained within these particulars are made without responsibility on the part of Chestertons or the vendor, (iii) whilst made in good faith, none of the statements contained within these particulars are to be relied upon as a statement or representation of fact, (iv) any intending purchasers must satisfy themselves by inspection or otherwise as to the correctness of each of the statements contained within these particulars, (v) the vendor does not make or give either Chestertons or any person in their employment any authority to make or give representation or warranty whatsoever in relation to this property. Wide angle lenses may be used. ©Copyright Chestertons | Chesterton Global Ltd | Registered Office 40 Connaught Street, Hyde Park, London W2 2AB Registered Company Number 05334580.



This paper is  
100% recyclable