

32 Village Centre, £245,000*

(Other charges apply)

RICHMOND
VILLAGES

Part of Bupa



1



1



EPC - B



1 bedroom first floor apartment

We are delighted to offer this charming one-bedroom apartment, perfectly situated to enjoy stunning west-facing views of the nature reserve and lake. Thoughtfully designed for comfort and convenience, the property features a welcoming entrance hall, an open-plan living area with a stylish kitchenette, and a spacious bedroom complemented by an en suite shower room. Surrounded by beautifully maintained grounds and close to village amenities this home offers a peaceful lifestyle within a vibrant community.

Specification

- A bright west-facing living room with double-glazed window offering views of the nature reserve and lake, complimented by a feature fireplace.
- Modern fitted kitchenette with fitted wall and base units, under-cupboard lighting, and integrated fridge with freezer compartment.
- A spacious bedroom with double-glazed window and beautiful views.
- Shower room with walk-in shower and wood finish fitted suite.
- Entrance hall with a storage cupboard offering space for belongings.
- TV and satellite points*.
- Beautifully maintained communal gardens with nearby bowling green, nature reserve, and private allotments.

*Satellite subscription not included.

Important Notice: These particulars are intended to give a fair and substantially correct overall description. All dimensions are approximate. The properties are sold unfurnished. Properties are sold on a 125 year lease and this property has 110 years remaining.



01235 773970

letcomberegis@richmond-villages.com

Richmond Villages Letcombe Regis,
South Street, Letcombe Regis, Oxfordshire OX12 9RG

32 Village Centre

First Floor | 559ft²

Kitchenette

2300mm x 2180mm
7'7" x 7'2"

Living Room

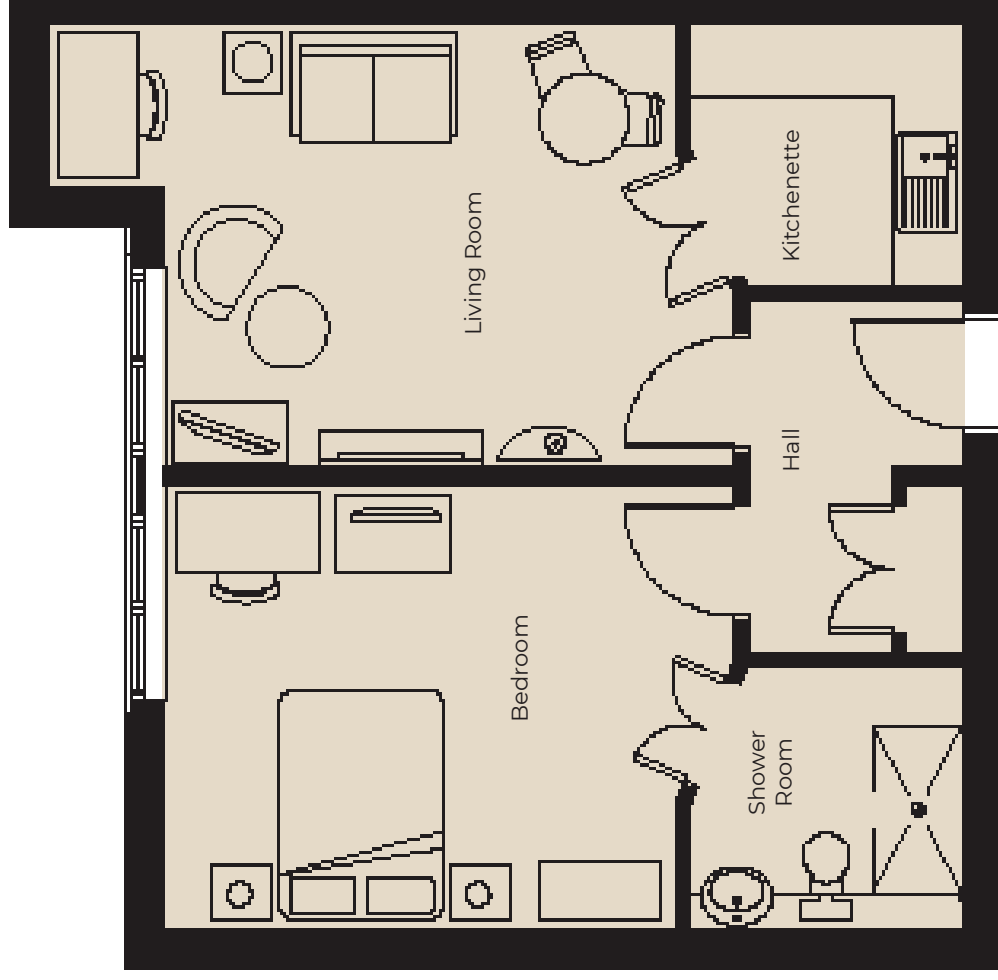
5265mm x 3698mm
17'3" x 12'2"

Bedroom

4800mm x 3697mm
15'9" x 12'2"

En Suite Shower Room

2300mm x 2180mm
7'7" x 7'2"



These particulars are intended to give a fair and substantially correct overall description.

Measurements have been taken at 1500mm skirting height.

All dimensions are approximate. Bedroom measurements include the wardrobe if applicable. Room measurements include bay windows if applicable.

Furniture layout is to give an indicative impression. Although all efforts have been made to ensure its accuracy at time of print dimensions, fixtures, fittings, finishes and specifications are subject to change without notice.

The properties are sold unfurnished.

