



ARCH LIVING

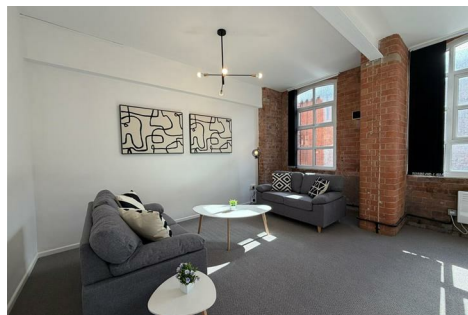
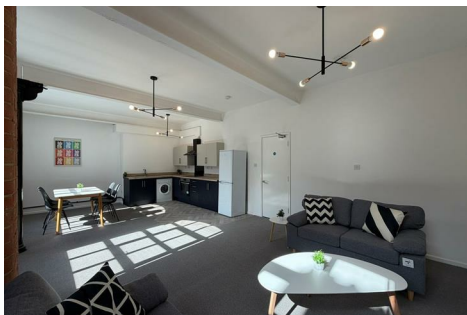
[www.archliving.co.uk](http://www.archliving.co.uk)



**16 York Street, Leicester, LE1 6NU**

**£1,300 PCM**

An exceptional two bedroom apartment within this stunning newly refurbished development in the heart of Leicester city centre, offering one of the most impressive living spaces within the building. Designed to create a bold sense of openness and light, the apartment benefits from an expansive open-plan kitchen and living area, providing a rare amount of entertaining and relaxation space for city-centre living.



127 Clarendon Park Road, Leicester, Leicestershire LE2 3AJ  
T: 0116 270 6699  
[lettings@archliving.co.uk](mailto:lettings@archliving.co.uk)

**ARCH**



ARCH LIVING

www.archliving.co.uk

Energy Efficiency Rating		Current	Potential
Very energy efficient - lower running costs			
(92 plus) <b>A</b>			
(81-91) <b>B</b>			
(69-80) <b>C</b>			
(55-68) <b>D</b>			
(39-54) <b>E</b>			
(21-38) <b>F</b>			
(1-20) <b>G</b>			
Not energy efficient - higher running costs			
<b>England &amp; Wales</b>		EU Directive 2002/91/EC	

Environmental Impact (CO <sub>2</sub> ) Rating		Current	Potential
Very environmentally friendly - lower CO <sub>2</sub> emissions			
(92 plus) <b>A</b>			
(81-91) <b>B</b>			
(69-80) <b>C</b>			
(55-68) <b>D</b>			
(39-54) <b>E</b>			
(21-38) <b>F</b>			
(1-20) <b>G</b>			
Not environmentally friendly - higher CO <sub>2</sub> emissions			
<b>England &amp; Wales</b>		EU Directive 2002/91/EC	



127 Clarendon Park Road, Leicester, Leicestershire LE2 3AJ  
T: 0116 270 6699  
lettings@archliving.co.uk

ARCH