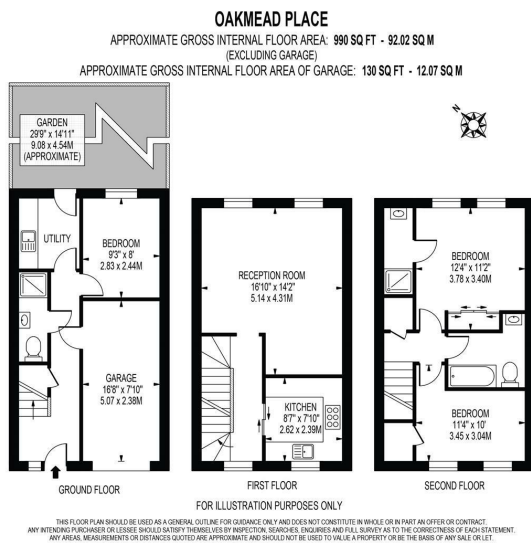


## Oakmead Place Mitcham, CR4 3RU

**£550,000 Freehold**



A three double bedroom modern townhouse located on a quiet road on the borders of Colliers Wood, close to the Tube Station (Northern Line). The layout is arranged over three floors and comprises a garage, downstairs shower room, utility room, third bedroom, and access to a private rear garden on the ground floor. On the first floor you will find the fitted kitchen and a spacious lounge/diner with views over the rear garden. On the top floor is the master bedroom with its own en-suite, a second double bedroom, and the family bathroom. With off-street parking for two vehicles, garage space, and the potential to be sold with no onward chain, this property is highly sought after and ideal for a first-time buyer looking to move into the Colliers Wood area.



- Three Bedroom Modern Townhouse
- Three Bathrooms
- Arranged Over Three Floors
- Off Street Parking
- No Onward Chain
- Fantastic First Purchase
- Close To Colliers Wood Tube (Northern Line)
- Garage
- EPC Rating : C
- Merton Council Tax Band : E

Energy Efficiency Rating		
	Current	Potential
Very energy efficient - lower running costs		
(92 plus) <b>A</b>		
(81-91) <b>B</b>		
(69-80) <b>C</b>		
(55-68) <b>D</b>		
(39-54) <b>E</b>		
(21-38) <b>F</b>		
(1-20) <b>G</b>		
Not energy efficient - higher running costs		
<b>England &amp; Wales</b>		
		EU Directive 2002/91/EC

For Free Mortgage Quote and Best Mortgage Rates, call an Ellisons Mortgage Advisor on 020 8544 0518



Although these particulars are believed to be correct, their accuracy is not guaranteed and they do not form part of any contract.

**Celebrating 30 years of successful Sales and Lettings in Merton**

