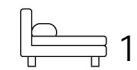




Living
made
better

Charles Darwin House
Canning Town, E16 1YE



40% Shared ownership £140,000

Charles Darwin House, Canning Town, E16 1YE

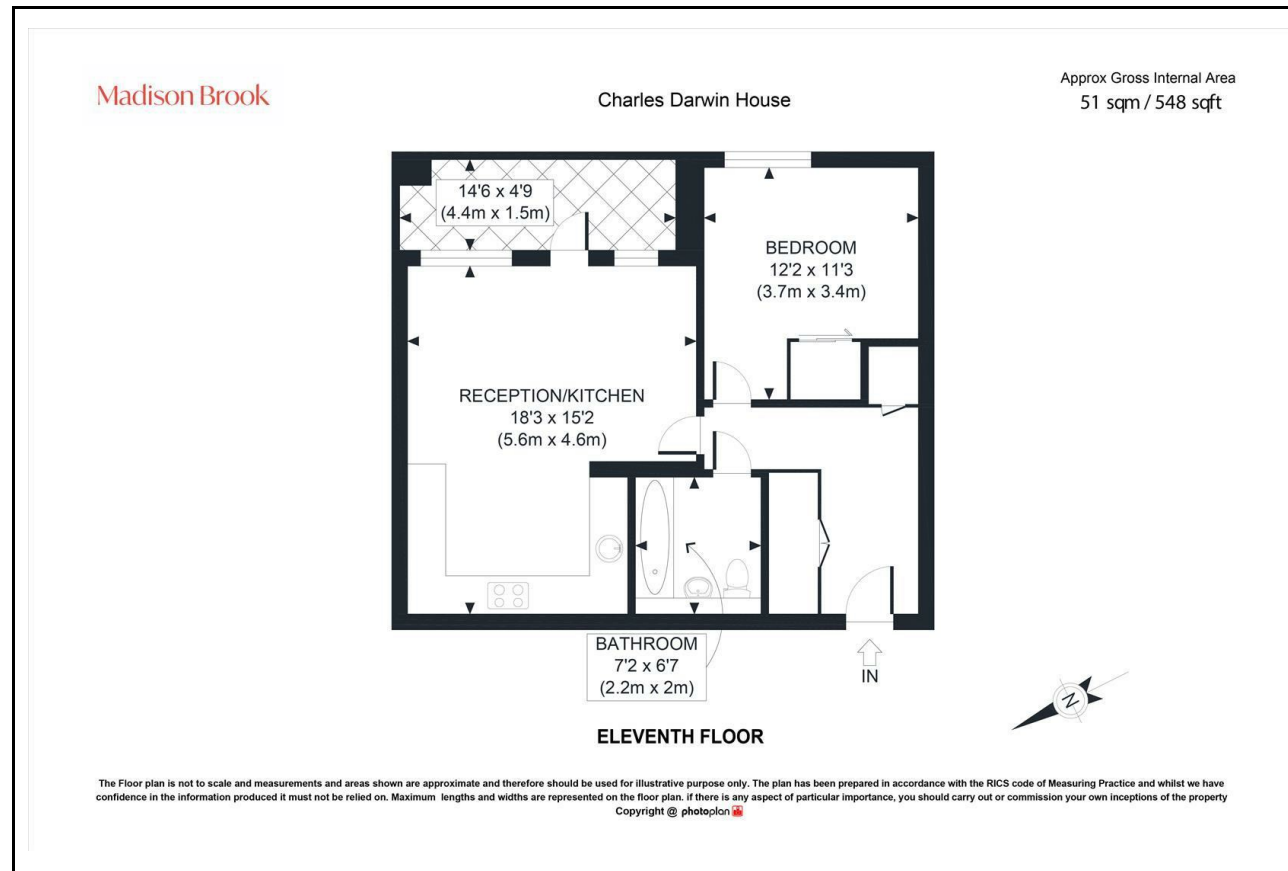
Madison Brook

Property Summary

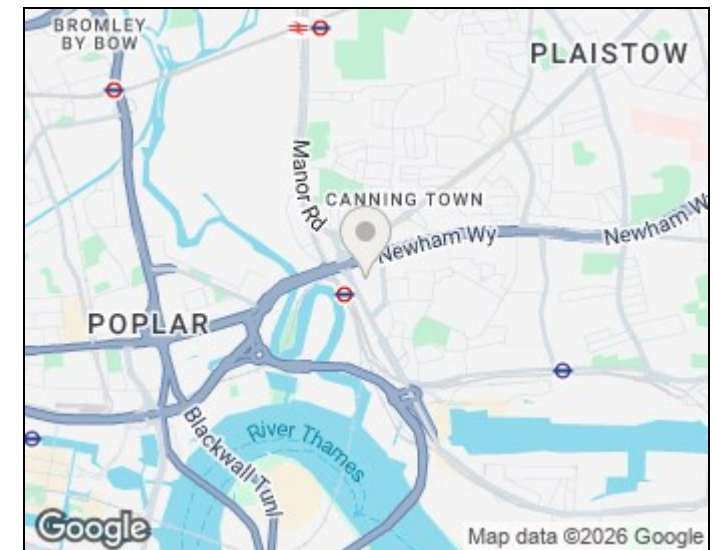
A well-maintained one-bedroom apartment on the 11th floor of Charles Darwin House, offering east-facing views and a private balcony. Features an open-plan living space, built-in bedroom storage, and modern bathroom. Located in the popular Hallsville Quarter near Canning Town Station (Jubilee & DLR), with local amenities on your doorstep. Lift access and EWS1 B1 compliant.

Available at £370,000 full ownership or £150,000 shared ownership (40% share; rent £795.39/month).

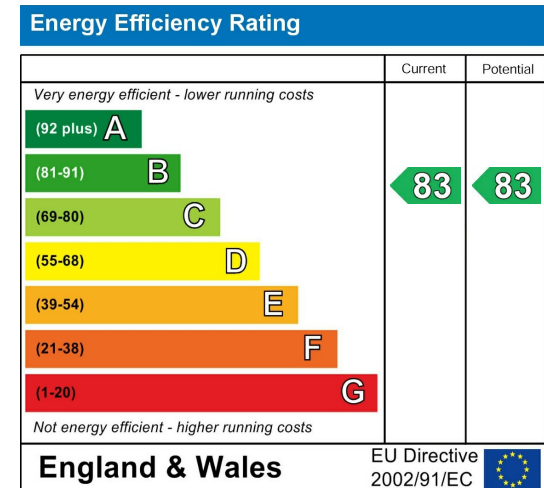
Floorplan



Area Map



Energy Efficiency Graph



These particulars, whilst believed to be accurate are set out as a general outline only for guidance and do not constitute any part of an offer or contract. Intending purchasers should not rely on them as statements of representation of fact, but must satisfy themselves by inspection or otherwise as to their accuracy. No person in this firm's employment has the authority to make or give any representation or warranty in respect of the property.

Unit B 20 Western Gateway, Royal Victoria
Dock, London, E16 1BS
Tel: 020 3946 6000 Email:
docklands@madisonbrook.com
<https://madisonbrook.com/>