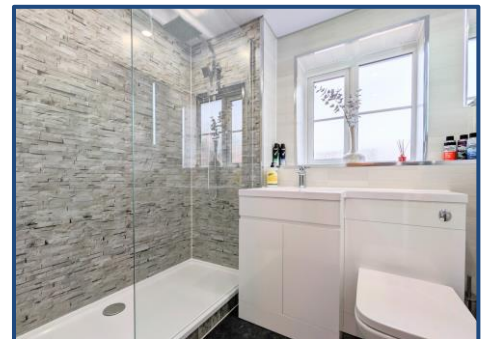


# Golf Open 2026 - White Otter Close, Ainsdale - Sleeps 6

## Weekly Rental Of £6,000



naea | propertymark

PROTECTED

Sales

T: 01704 550048

E: sales@ajestateagents.co.uk

arla | propertymark

PROTECTED

Rentals

T: 01704 543434

E: rentals@ajestateagents.co.uk

Property Management

T: 01704 545800

E: pm@ajestateagents.co.uk



**The Property Ombudsman**

## Property Features

- 2026 GOLF OPEN ACCOMMODATION
- 3 DOUBLE BEDROOMS
- MASTER EN SUITE AND FAMILY SHOWER ROOM
- TWO RECEPTION ROOMS
- MODERN OPEN PLAN KITCHEN/DINER
- OFF ROAD PARKING
- FULLY FUNCTIONING BAR IN GARDEN
- 1.3 MILES TO ROYAL BIRKDALE



## Property Description

Welcome to this beautifully presented and perfectly positioned home, located just 1.3 miles from the world-renowned Royal Birkdale Golf Club – an exceptional base for guests attending The Open in 2026. Combining modern style with a warm and welcoming atmosphere, this stunning property offers a comfortable retreat with thoughtful touches throughout. For those looking to celebrate in style, a fantastic private bar room sits to the rear of the property, creating the perfect space for entertaining and hosting gatherings. Spread across two well-proportioned floors, this home is ideal for families or small groups. Upstairs, there are three double bedrooms, each with ample wardrobe storage. One bedroom features its own luxurious en-suite shower room for added privacy, while a second family shower room with a large cubicle serves the remaining bedrooms. A convenient downstairs WC adds to the home's practicality. The moment you step inside, you're welcomed by a stylish and inviting hallway. The front lounge offers a relaxed space to unwind, complete with large, plush sofas and a big-screen TV with Sky, including sports channels – perfect for catching up on all the tournament action. To the rear, the open-plan kitchen and dining area is a true highlight, boasting sleek high-gloss units and modern appliances, including an electric oven, microwave, fridge freezer, and washing machine. A glass dining table comfortably seats six, with views through French doors that open directly onto the rear garden. Outside, the garden provides a superb setting for alfresco living, with comfortable sofas, dining furniture, a BBQ, and charming festoon lighting that creates a magical atmosphere for evening drinks and outdoor meals after a day at the course. Beyond the main garden, a separate outbuilding has been transformed into a dedicated bar and club space, offering a private venue for lively get-togethers without disturbing the main house with working beer pumps, heating & electricity. The property's location offers the perfect mix of tranquillity and accessibility. Just a short drive from Royal Birkdale and within walking distance of the picturesque village of Ainsdale, guests can enjoy peaceful, tree-lined streets and a relaxed coastal vibe. Ainsdale itself boasts an array of independent shops, welcoming cafés, vibrant bars, and excellent restaurants. Nature lovers will be drawn to the nearby pine woods and sweeping sandy beaches, ideal for scenic walks and stunning sunset views. Modern conveniences such as high-speed Wi-Fi are available throughout the property, ensuring you stay connected and entertained during your stay. Off-road parking is provided on the driveway for up to two standard vehicles, and flexible check-in and check-out times can be arranged to suit your travel plans. Whether you are visiting for The Open or simply seeking a stylish coastal escape, this beautifully equipped home delivers the perfect blend of comfort, convenience, and charm – a memorable base for an unforgettable stay.



naea | propertymark

PROTECTED

Sales

T: 01704 550048

E: sales@ajestateagents.co.uk

ar|a | propertymark

PROTECTED

Rentals

T: 01704 543434

E: rentals@ajestateagents.co.uk

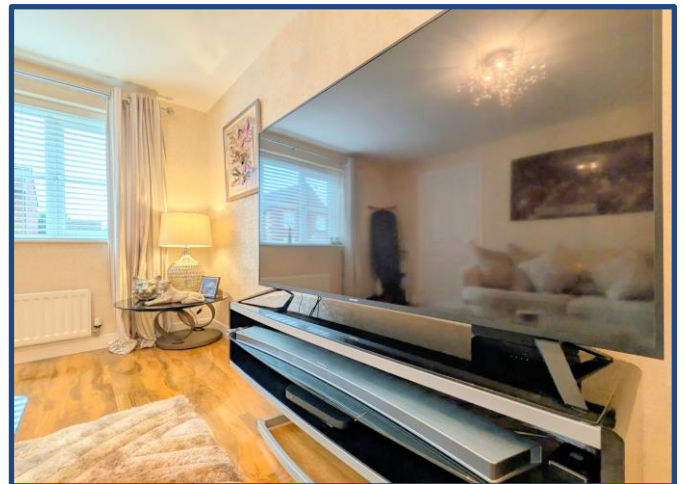
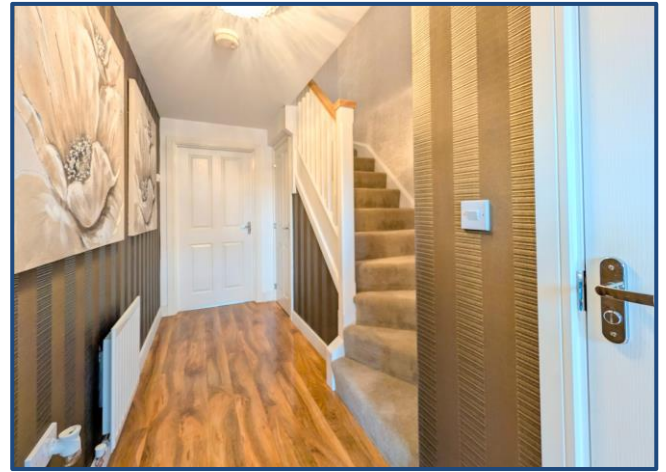
Property Management

T: 01704 545800

E: pm@ajestateagents.co.uk



The Property Ombudsman



naea | propertymark  
PROTECTED

Sales  
T: 01704 550048  
E: sales@ajestateagents.co.uk

arla | propertymark  
PROTECTED

Rentals  
T: 01704 543434  
E: rentals@ajestateagents.co.uk

Property Management  
T: 01704 545800  
E: pm@ajestateagents.co.uk





**Sales**

T: 01704 550048

E: sales@ajestateagents.co.uk



**Rentals**

T: 01704 543434

E: rentals@ajestateagents.co.uk



**Property Management**

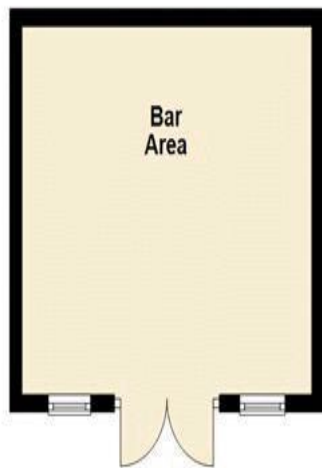
T: 01704 545800

E: pm@ajestateagents.co.uk

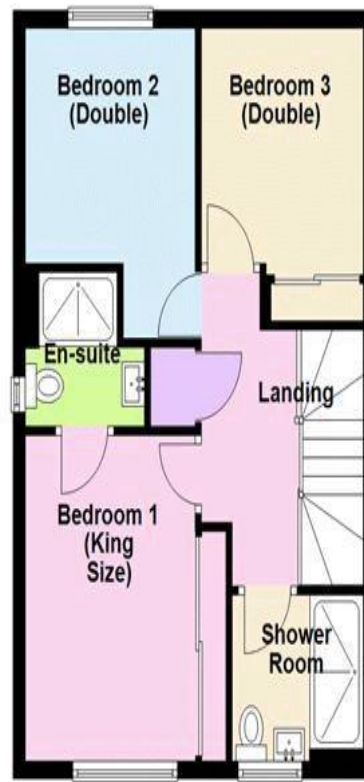
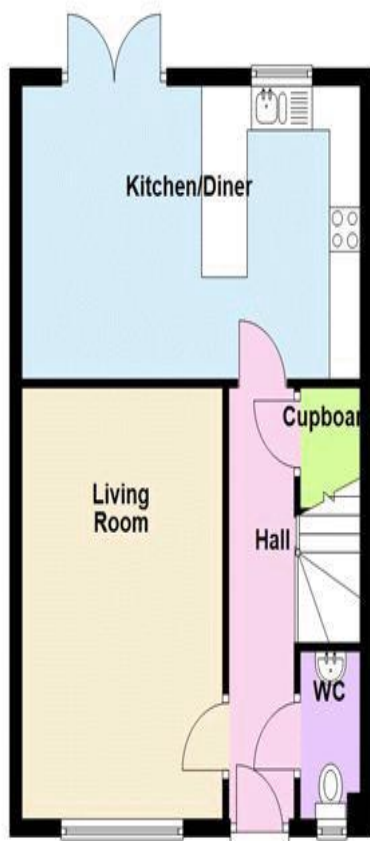


**The Property Ombudsman**

### Ground Floor



### First Floor



Disclaimer: Interested parties should satisfy themselves, by inspection or otherwise as to the accuracy of the description given and any floor plans shown in these property details. All measurements, distances and areas listed are approximate. Fixtures, fittings and other items are included unless specified in these details.

naea | propertymark

PROTECTED

Sales

T: 01704 550048

E: sales@ajestateagents.co.uk

arla | propertymark

PROTECTED

Rentals

T: 01704 543434

E: rentals@ajestateagents.co.uk

Property Management

T: 01704 545800

E: pm@ajestateagents.co.uk



The Property Ombudsman