



37 Tithe Road

Plympton, Plymouth, PL7 4QQ

£270,000



Semi-detached bungalow situated in the Woodford area of Plympton. The property is in a good condition throughout & includes an entrance hall & a lounge/diner with a veranda offering views over Plympton & beyond, kitchen, 2 bedrooms & shower room. Externally there is a garage & off-road parking for 2 vehicles with gardens to the front & rear.



TITHE ROAD, PLYMPTON, PLYMOUTH PL7 4QQ

ACCOMMODATION

Composite door, with inset patterned glass, opening into the entrance hall.

ENTRANCE HALL 10'7" x 3'6" (3.24 x 1.07)

Doors providing access to the accommodation. Storage cupboard. Drop-down access hatch with pull-down ladder to insulated loft with lighting.

KITCHEN 10'8" x 9'9" (3.27 x 2.98)

Fitted with a matching range of base and wall-mounted units incorporating a roll-edged laminate worktop with inset 4-ring gas hob and stainless-steel extraction over, one-&-a-half bowl stainless-steel sink unit with mixer tap. Integrated oven. Spaces for fridge/freezer and washing machine. uPVC double-glazed window to the front elevation. Secondary extraction system.

LOUNGE/DINER 17'2" x 11'6" (5.24 x 3.52)

Feature gas fire set onto a polished stone hearth with surround and mantel. uPVC double-glazed patio doors to the front opening to the veranda.

BEDROOM ONE 12'7" x 10'5" (3.85 x 3.19)

Range of built-in wardrobes, dressing table and storage units. uPVC double-glazed window to the rear elevation.

BEDROOM TWO 11'8" x 9'3" (3.58 x 2.84)

Currently being used as a snug. uPVC double-glazed window to the rear elevation.

SHOWER ROOM 8'4" x 7'0" (2.55 x 2.14)

Beautifully fitted with a matching suite comprising a walk-in shower with waterfall attachment, wall-mounted wash handbasin with mixer tap and a concealed cistern wc. Range of storage units. Graphite heated towel rail. Extraction system. Obscured uPVC double-glazed window to the side elevation.

GARAGE 18'0" x 10'6" (5.51 x 3.22)

Up-&-over door. Water, power and lighting. Boiler. Meters.

OUTSIDE

The property is approached via a brick-paved driveway leading to the garage, with areas laid to stone chippings and steps ascending to the front door. A walkway to the side leads through to the rear garden which is fully-enclosed and tiered, laid for low maintenance, including areas of stone chippings and pebbles interspersed with shrubs. At the top level a gate provides access to the adjoining fields. There are views over the embankment, Hardwick woods, Plympton and beyond.

COUNCIL TAX

Plymouth City Council
Council Tax Band: C

SERVICES

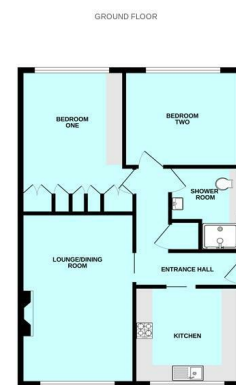
The property is connected to all the mains services: gas, electricity, water and drainage.

These particulars, whilst believed to be accurate are set out as a general outline only for guidance and do not constitute any part of an offer or contract. Intending purchasers should not rely on them as statements of representation of fact, but must satisfy themselves by inspection or otherwise as to their accuracy. No person in this firm's employment has the authority to make or give any representation or warranty in respect of the property.

Area Map



Floor Plans



Energy Efficiency Graph

