



*Jordan fishwick*

Apt 207 Forge, 11 Lockside Lane, M5 4YP

£1,150 Per Month



## Forge Middlewood Locks M5 4YP

£1,150 Per Month




### The Property

Available Mid August. Jordan Fishwick are pleased to present this stunning ONE BEDROOM second floor apartment at Forge, Lockside Lane, part of the very popular MIDDLEWOOD LOCKS development which completed in October 2019. The property is immaculately presented throughout and boasts a great size living room, balcony with water views, large bedroom with built in wardrobes and a modern shower room. There is also an on site caretaker, communal roof gardens and a shop and brewery on the complex. No Parking. Tax Band B. EPC Rating B. Professionals Only.

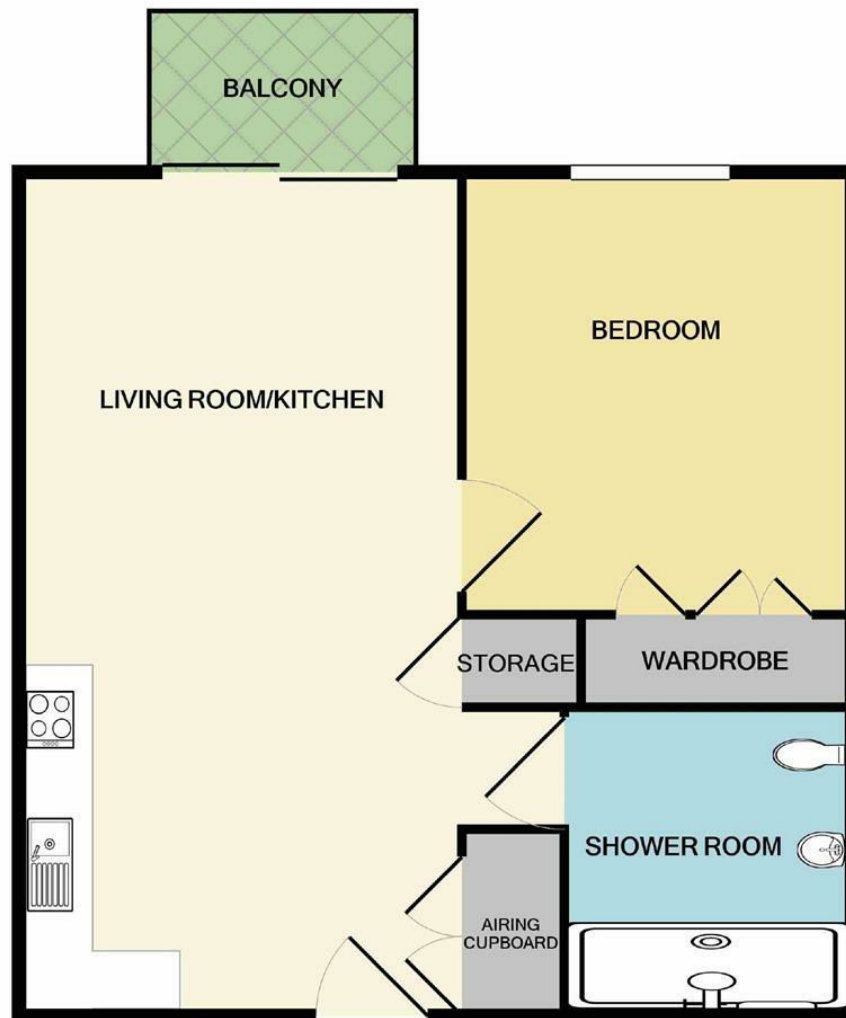
**\*VIDEO/ PHOTO OFFERS NOT ACCEPTED - PLEASE CALL TO BOOK A VIEWING\***

- Available Mid August
- One Bedroom Apartment - Second Floor
- Balcony
- Close to City Centre
- Communal Roof Garden
- EPC Rating B
- Tax Band B
- No Parking
- On Site Caretaker



Energy Efficiency Rating		
	Current	Potential
Very energy efficient - lower running costs		
(92 plus) <b>A</b>		
(81-91) <b>B</b>	<b>85</b>	<b>85</b>
(69-80) <b>C</b>		
(55-68) <b>D</b>		
(39-54) <b>E</b>		
(21-38) <b>F</b>		
(1-20) <b>G</b>		
Not energy efficient - higher running costs		
<b>England &amp; Wales</b>	EU Directive 2002/91/EC 	





Measurements are approximate. Not to scale. Illustrative purposes only  
Made with Metropix ©2021



These particulars are believed to be accurate but they are not guaranteed and do not form a contract. Neither Jordan Fishwick nor the vendor or lessor accept any responsibility in respect of these particulars, which are not intended to be statements or representations of fact and any intending purchaser or lessee must satisfy himself by inspection or otherwise as to the correctness of each of the statements contained in these particulars. Any floorplans on this brochure are for illustrative purposes only and are not necessarily to scale.

Offices at: Offices at Chorlton, Didsbury, Disley, Hale, Glossop, Macclesfield, Manchester Deansgate, Manchester Whitworth Street, New Mills, Sale, Wilmslow and Withington