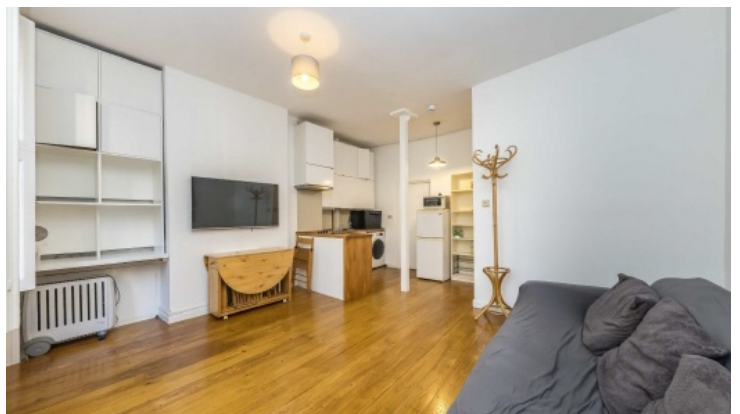


# Frank Harris & Co.



Old Gloucester Street, WC1N

£400,000

Introducing this one-bedroom period property set just off Queen Square. The apartment features wooden flooring throughout the open-plan kitchen and reception room, complemented by high ceilings and large windows that retain their original shutters. The bedroom leads to an en-suite bathroom and overlooks the communal garden. Key features include a low service charge, no onward chain, and bike storage. The front of the property overlooks a community square, ensuring optimal privacy.

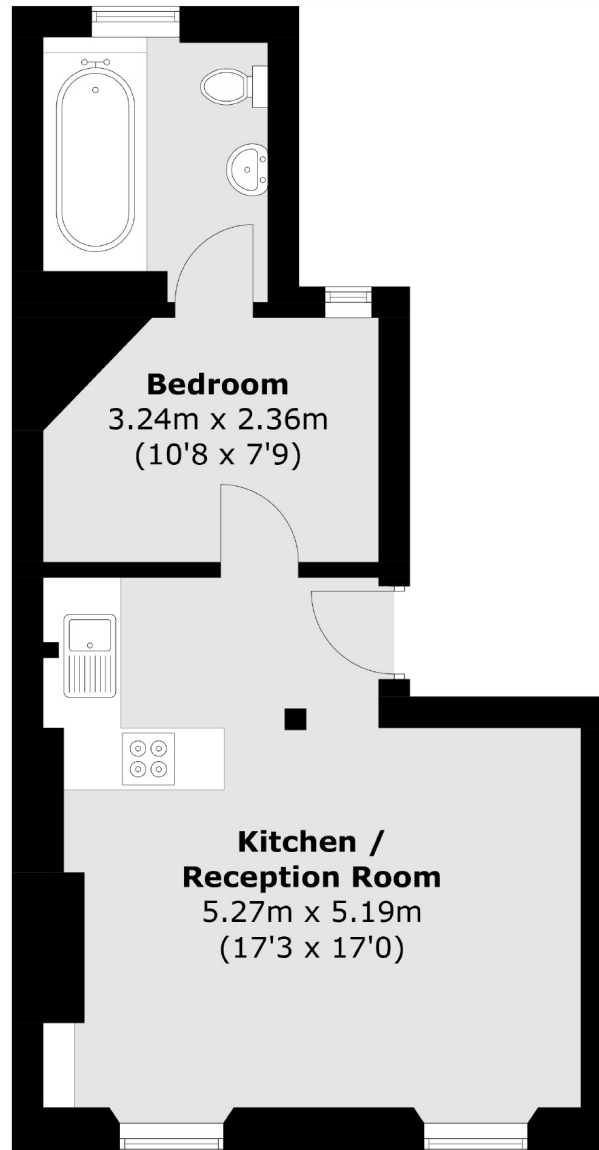


Old Gloucester Street runs through the Bloomsbury area, with both Queen Square and Russell Square ideally located nearby. The British Museum and other historic landmarks are also within close proximity. Excellent transport links are available at Tottenham Court Road, Russell Square, and King's Cross stations, providing a range of Underground connections.

- No Onward Chain • Period Property • Communal Garden •
- Bike Storage • High Ceilings • Low Service Charge •



# Frank Harris & Co.



Total area (approx.): 38.7 sq. m (416.6 sq. ft)

Frank Harris & Co. Bloomsbury and Kings Cross

81 Marchmont Street,

London, WC1N 1AL

020 7405 4444

[bloomsburysales@frankharris.co.uk](mailto:bloomsburysales@frankharris.co.uk)

Energy Rating: C. We aim to make our particulars both accurate and reliable. However they are not guaranteed; nor do they form part of an offer or contract. If you require clarification on any points then please contact us, especially if you're traveling some distance to view. Please note that appliances and heating systems have not been tested and therefore no warranties can be given as to their good working order.

