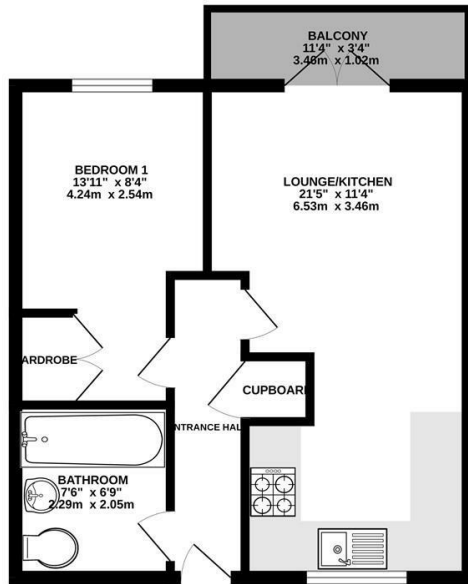




**Keith
Ashton**

Rollason Way,
Brentwood

FIRST FLOOR
422 sq.ft. (39.2 sq.m.) approx.



TOTAL FLOOR AREA: 422 sq.ft. (39.2 sq.m.) approx.
Measurements are approximate. See for scale. Illustrative purposes only.
Made with Metropix 2025

Guide Price £230,000



29 Wilkinson Court, Rollason Way, Brentwood, CM14 4EU

****Guide Price; £230,000 - £240,000**** We are delighted to bring to market this well-presented one-bedroom first-floor apartment, ideally located just 0.3 miles from Brentwood Station, providing excellent transport links into London and beyond.

The internal accommodation comprises a bright and spacious open-plan lounge and kitchen, opening onto a private balcony – perfect for relaxing outdoors. The modern kitchen is complemented by sleek units and integrated appliances. A generous double bedroom with fitted wardrobes and a stylish contemporary bathroom complete the living space.

This impressive development further benefits from gated underground parking, a secure entry phone system, and both lift and stair access to all floors. Combining comfort, convenience, and connectivity, this apartment is an ideal choice for first-time buyers and commuters alike.



Energy Efficiency Rating		Environmental Impact (CO ₂) Rating	
Current	Potential	Current	Potential
82	82	A	A

Very energy efficient - lower running costs
Very environmentally friendly - lower CO₂ emissions

England & Wales EU Directive 2002/91/EC

SERVICES:

Local Authority: Brentwood
Council tax band: C
Post code: CM14 4EU

VIEWING:

Strictly by prior arrangement with Keith Ashton Estate Agents

OPENING HOURS:

Monday to Friday: 8.45AM - 6.30PM | Saturdays: 9AM - 5.30PM | Sundays: 10AM - 2PM

MORTGAGE INFORMATION:

We offer the additional facility of an in-house Independent Financial Adviser who will access all mortgage lenders with the purpose of providing you with the benefit of choice. For quotations or comparables please call 01277 260858 or visit our interactive website at www.mortgagebusiness.net



We the Agent have not tested any apparatus, fittings or services for this property. The plot size is intended merely as a guide and has not been officially measured or verified by the Agent. Photographs are for illustration only and may depict items which are not for sale or included in the sale of the property. As part of the service we offer we may recommend ancillary services to you which we believe may help you with your property transaction. We wish to make you aware, that should you decide to use these services we will receive a referral fee. For full and detailed information please visit 'terms and conditions' on our website www.keithashton.co.uk

Brentwood
Tel. 01277 260858

Village Office
Tel. 01277 375757

Lettings Office
Tel. 01277 202200

Explore more @ www.keithashton.co.uk

