

for sale

£98,500



## Victoria Street Shaftesbury SP7 8AG

A one bedroom first floor apartment in Shaftesbury town centre a stones throw from all local amenities. In need of some modernisation throughout, comprising of lounge, kitchen, bedroom, bathroom and the benefit of a parking space.





# Victoria Street Shaftesbury SP7 8AG

## Lounge

Double glazed window to the front and a night storage heater.

## Kitchen

Double glazed window to the front, over head cupboards, plumbing for a washing machine and dishwasher, sink and drainer and space for a fridge/freezer.

## Bedroom

Double glazed window to the rear and a night storage heater.

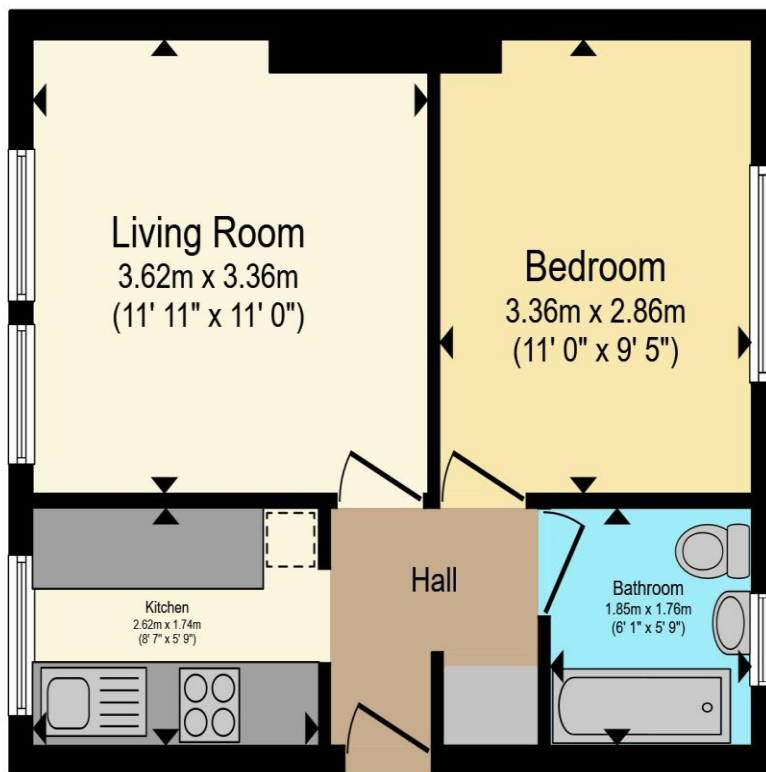


## Bathroom

Bath, WC and a wash hand basin.







Total floor area 34.3 m<sup>2</sup> (370 sq.ft.) approx

This floor plan is for illustrative purposes only. It is not drawn to scale. Any measurements, floor areas (including any total floor area), openings and orientation are approximate. No details are guaranteed, they cannot be relied upon for any purpose and they do not form part of any agreement. No liability is taken for any error, omission or misstatement. A party must rely upon its own inspection(s). Powered by [www.propertybox.io](http://www.propertybox.io)

**Connells**

To view this property please contact Connells on

**T 01747 854 001**  
**E [shaftesbury@connells.co.uk](mailto:shaftesbury@connells.co.uk)**

34 High Street  
SHAFTESBURY SP7 8JG

Property Ref: SFT305692 - 0003

Tenure: Leasehold EPC Rating: E

Council Tax Band: A Service Charge: Ask Agent

Ground Rent: 50.00

**view this property online [connells.co.uk/Property/SFT305692](http://connells.co.uk/Property/SFT305692)**

This is a Leasehold property with details as follows; Term of Lease 99 years from 29 Sep 1983. Should you require further information please contact the branch. Please Note additional fees could be incurred for items such as Leasehold packs.

1. MONEY LAUNDERING REGULATIONS Intending purchasers will be asked to produce identification documentation at a later stage and we would ask for your co-operation in order that there will be no delay in agreeing the sale. 2. These particulars do not constitute part or all of an offer or contract. 3. The measurements indicated are supplied for guidance only and as such must be considered incorrect. Potential buyers are advised to recheck measurements before committing to any expense. 4. We have not tested any apparatus, equipment, fixtures, fittings or services and it is in the buyers interest to check the working condition of any appliances.

Connells Residential is registered in England and Wales under company number 1489613, Registered Office is Cumbria House, 16-20 Hockliffe Street, Leighton Buzzard, Bedfordshire, LU7 1GN. VAT Registration Number is 500 2481 05.

see all our properties at [www.connells.co.uk](http://www.connells.co.uk) | [www.rightmove.co.uk](http://www.rightmove.co.uk) | [www.zoopla.co.uk](http://www.zoopla.co.uk)

