



ASKING PRICE

£165,000

black
grace
cowley
ESTATE AGENTS

THE DETAILS



34 Castlemona Avenue

Douglas

£165,000

call in today or visit www.blackgracecowley.com for more details

e: hello@blackgracecowley.com | w: blackgracecowley.com | t: +44 (0) 1624 645555

a: 51 Victoria Street, DOUGLAS, Isle of Man, IM1 2LD





PROPERTY DETAILS FOR

34 Castlemona Avenue, Douglas

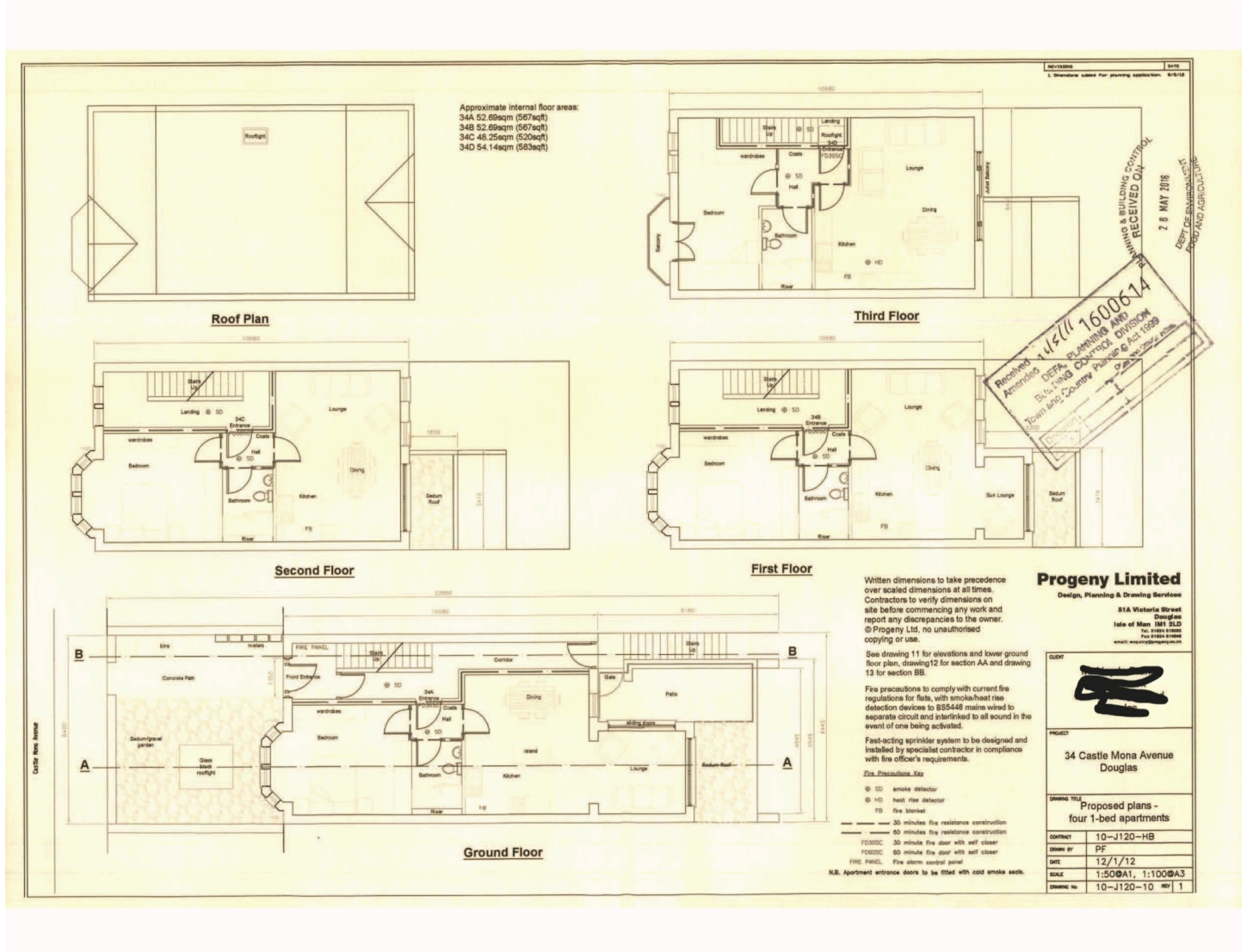
THE DESCRIPTION

- Building Plot with full planning approval for an apartment block
- Four 1 Bedroom Apartments
- Spacious open-plan living/kitchen/diner
- Large Double Bedroom, Bathroom
- 4x Car Garage to lower level with access from the rear
- Offered for sale with no onward chain
- Planning Ref: 16/00614/B

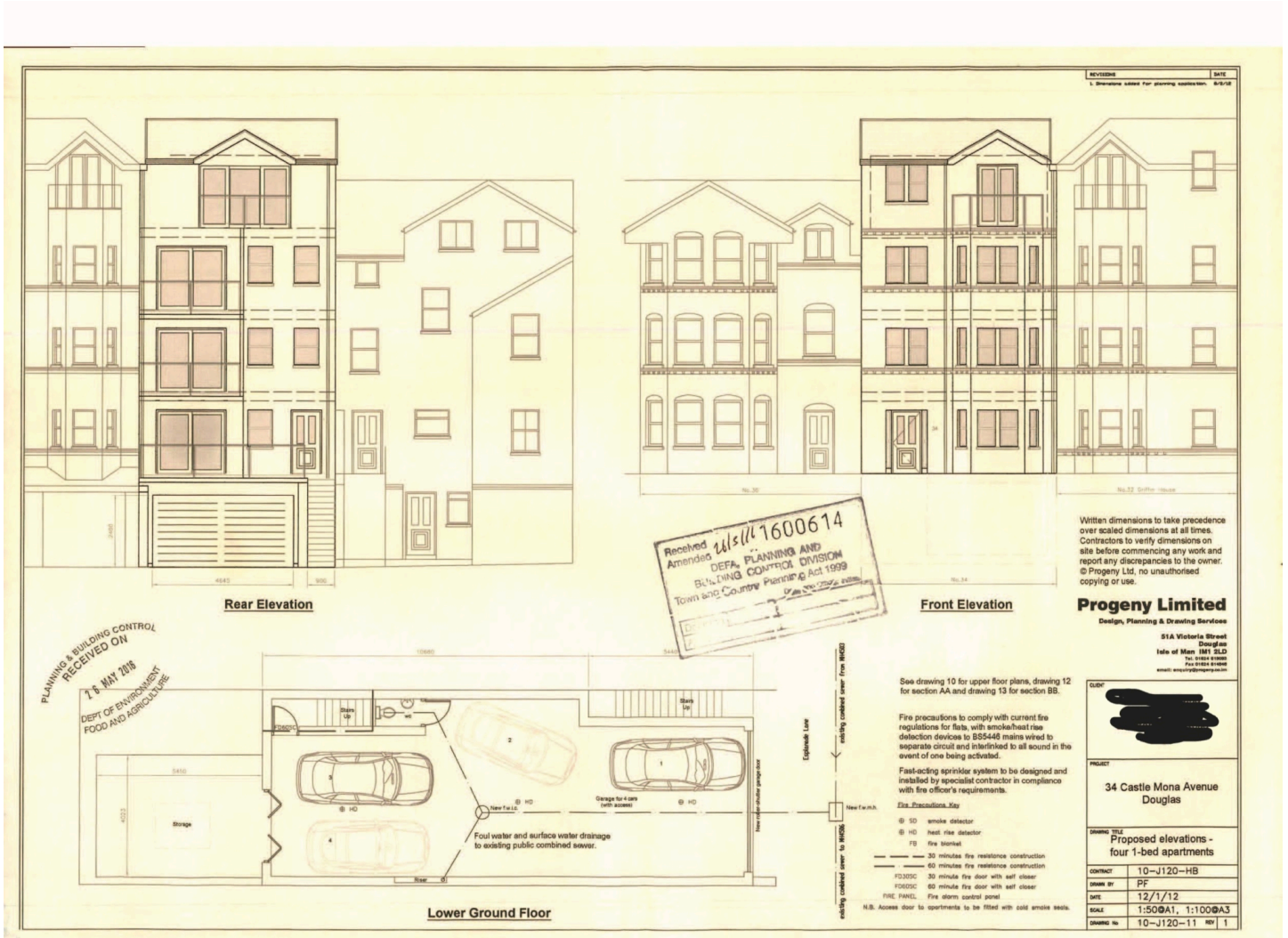
e: hello@blackgracecowley.com | **w:** blackgracecowley.com | **t:** +44 (0) 1624 645555

a: 51 Victoria Street, DOUGLAS, Isle of Man, IM1 2LD

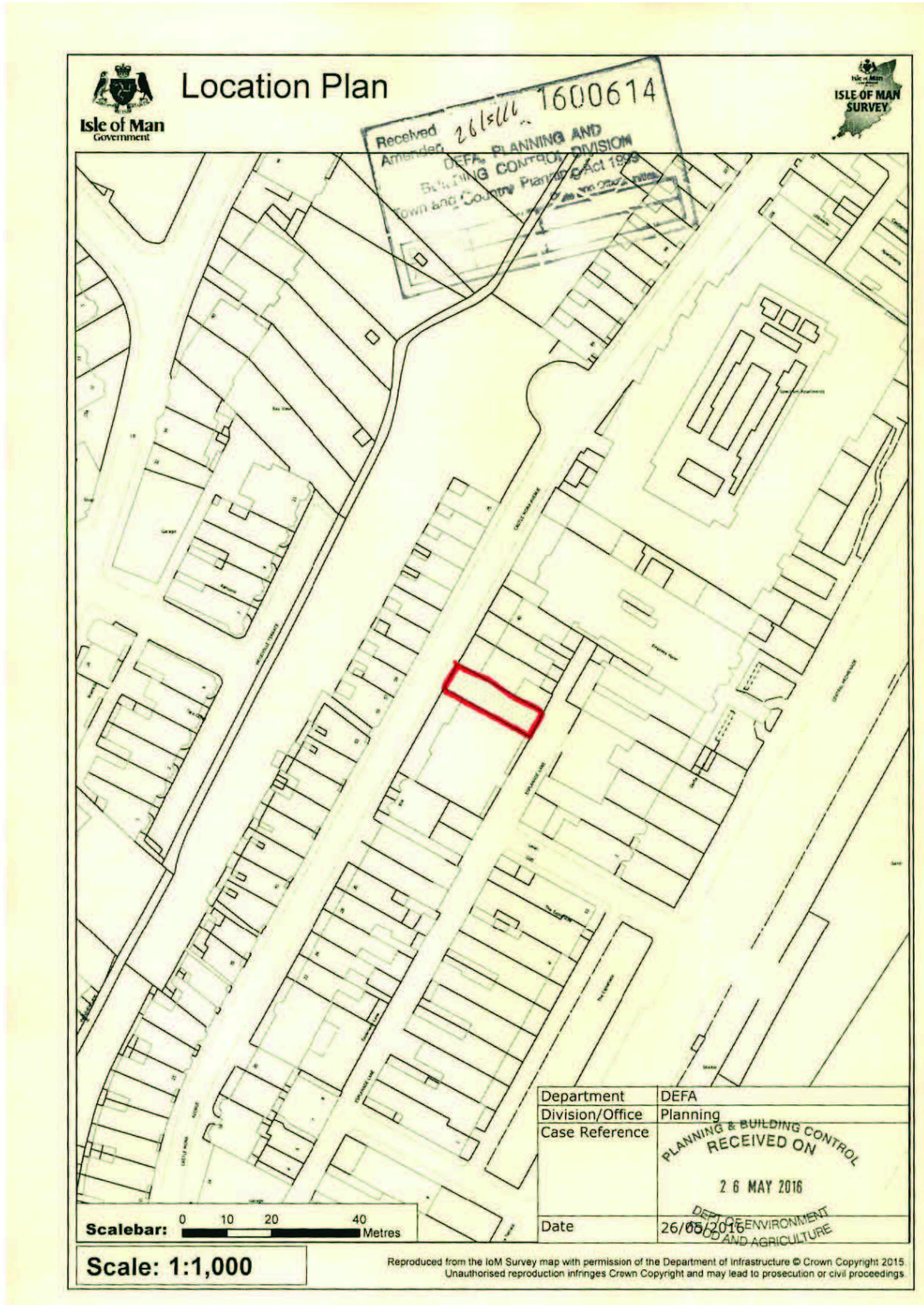
FLOORPLAN



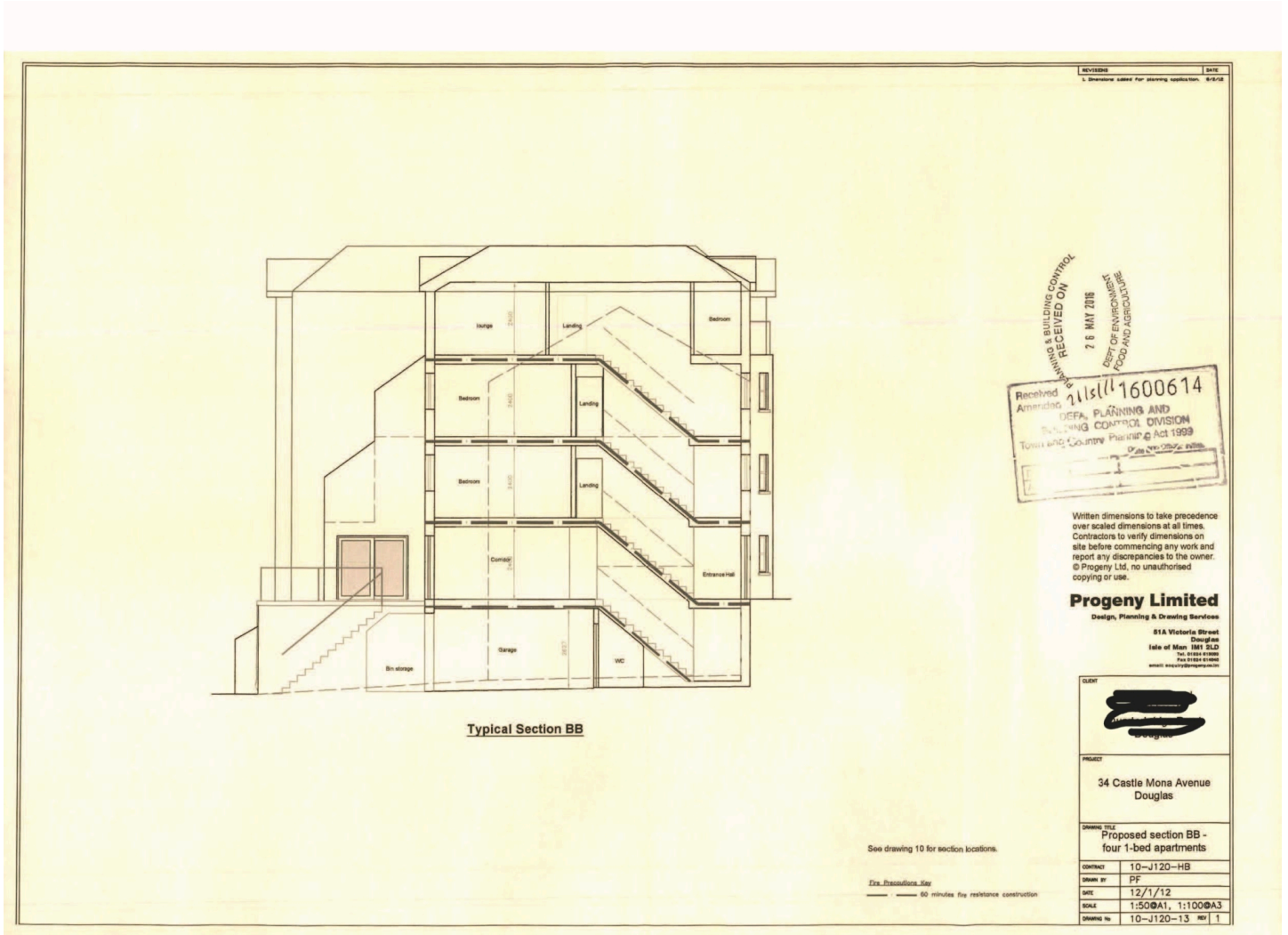
FLOORPLAN



SITE PLAN



SITE PLAN





PROPERTY DETAILS FOR

34 Castlemona Avenue, Douglas

Disclaimer

These particulars are for information purposes only and do not constitute or form any contract nor should any statement contained herein be relied upon as a representation of fact.

Neither the vendor nor Black Grace Cowley (the firm), nor any officer or employee of the firm accept liability or responsibility for any statement contained herein.

The vendor does not by these particulars, nor does the firm, nor does any officer or any employee of the firm have any authority to make or give any representation or warranty whatsoever as regards the property or otherwise. It is the sole responsibility of any person interested in the property described in these particulars to make all proper enquiries and searches to verify the description of the property and all other particulars herein.

e: hello@blackgracecowley.com | **w:** blackgracecowley.com | **t:** +44 (0) 1624 645555

a: 51 Victoria Street, DOUGLAS, Isle of Man, IM1 2LD