



LYDDEN GROVE, SW18

£499,000

- Potential to extend STPP
- One double bedroom
- Kitchen/breakfast room
- Private garden
- Desirable location
- Energy rating: D





## ABOUT THE HOME

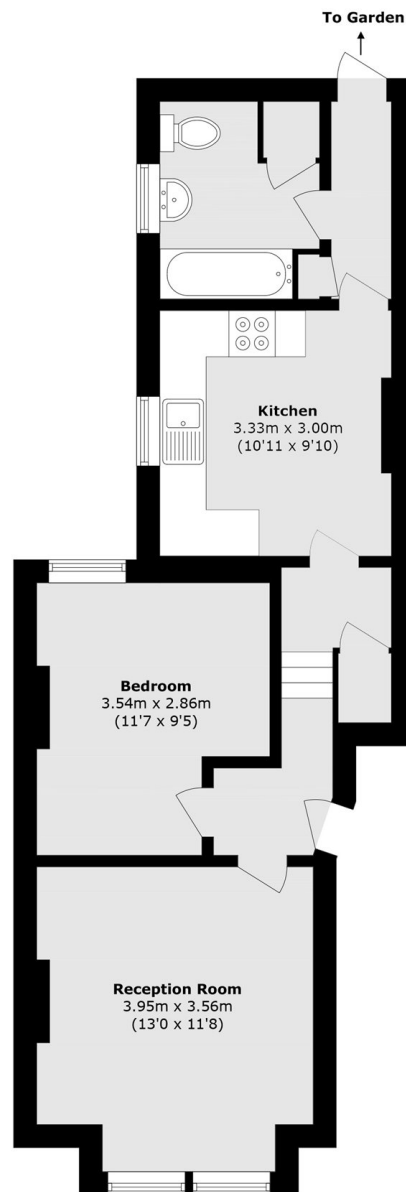
A charming ground floor period conversion flat offering a large private garden and side access. The end of terrace property offers development opportunities.

Accommodation comprises : a spacious and bright reception room; well-presented double bedroom; large kitchen with ample storage and space for dining; generous bathroom with bath and overhead shower; utility cupboard; storage cupboard; and delightful rear garden with terrace and lawned areas. Period features include high ceilings.

Ideally located within close proximity to both Earlsfield and Wandsworth Town Rail Stations, offering fast and reliable links into central London for easy commuting. This property is very well served by local independent cafes, excellent restaurants, and vibrant pubs as well as the open spaces of King George's Park and Southside shopping centre.







Total area (approx.): 47.3 sq. m (509.1 sq. ft)

#### JACKSONS EARLSFIELD

372-374 Garratt Lane,  
Earlsfield, London, SW18 4ES  
Sales: 020 8971 7979  
Lettings: 020 8971 7070

Energy Rating: D We aim to make our particulars both accurate and reliable. However they are not guaranteed; nor do they form part of an offer or contract. If you require clarification on any points then please contact us, especially if you're traveling some distance to view. Please note that appliances and heating systems have not been tested and therefore no warranties can be given as to their good working order.