





# 31 Tyrrell Mead

Guide Price £335,000

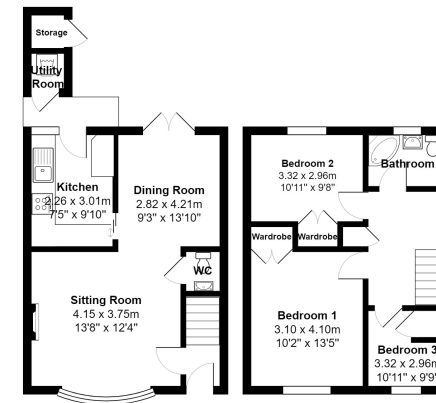
3 1 1



- Entrance hallway
- Modern fitted kitchen
- Two double bedrooms
- Family bathroom
- Garage
- Kitchen/Dining room
- Ground floor cloakroom
- Further single bedroom
- Southerly facing rear garden
- Energy rating ????

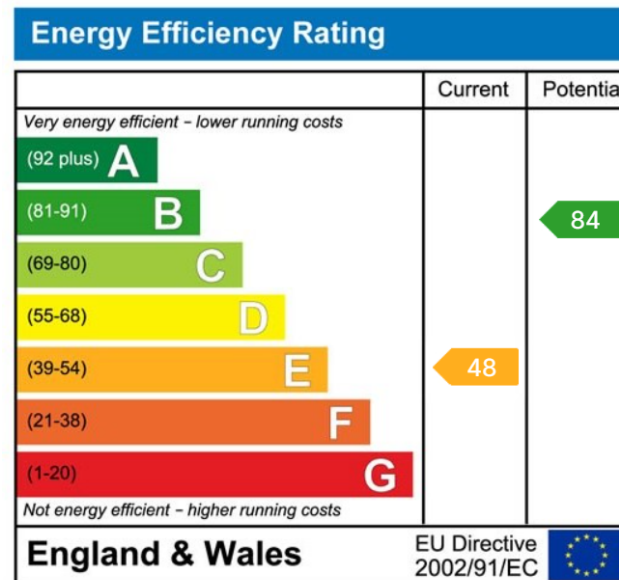






All measurements are approximate and for display purposes only

A superbly presented, recently refurbished home with a pleasant southerly facing rear gardens and garage situated in a nearby block.



Ottery St. Mary  
Exeter  
Sidmouth

01404 814 306  
01392 984 511  
01395 512 544

[www.redfernsproperty.co.uk](http://www.redfernsproperty.co.uk) | [sales@redfernsproperty.co.uk](mailto:sales@redfernsproperty.co.uk)



Redferns is a trading name of Redferns Ottery St Mary Limited. Registered in England and Wales 48170778. Registered office 8 Mill Street, Ottery St Mary, EX11 1AD